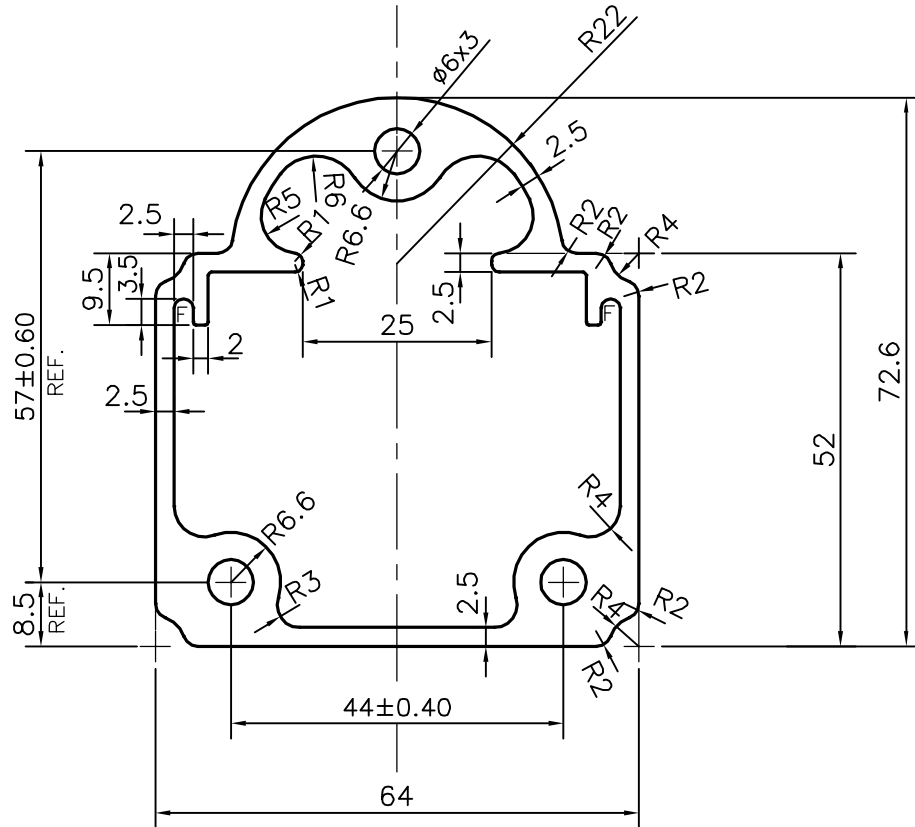


P-15318

S4740



F = FULL RADIUS (4 PLACES)



SYMBOL OF QUALITY  
AN ISO 9001 COMPANY

**JINDAL ALUMINIUM LTD.**  
BANGALORE-560073 (INDIA)

	NAME	DATE
DRAWN	J.P.KAUSHIK	13-11-2015
CHECKED		
APPROVED	S.S.GARG	20-11-2015
SCALE		1:1
AREA mm <sup>2</sup>		1077.869
PERIMETER mm.		241.758
WEIGHT kg/m		2.910

1. ALL DIMENSIONS ARE IN mm.
2. ROUND OFF ALL SHARP CORNERS WITH 0.40 mm.
3. TOLERANCES WILL BE AS PER IS:6477-1983 , UNLESS OTHERWISE SPECIFIED

PARTY'S NAME	CONFIDENT DENTAL EQUIPMENTS LTD., BANGALORE	DRAWING No.	P-15318	SECTION No.	-
PARTY'S DRAWING No.	R&D Z-13377		S4740		S4740
ALLOY & TEMPER	HE9 WP				
DESCRIPTION	MOVABLE TROLLAY SECTION				