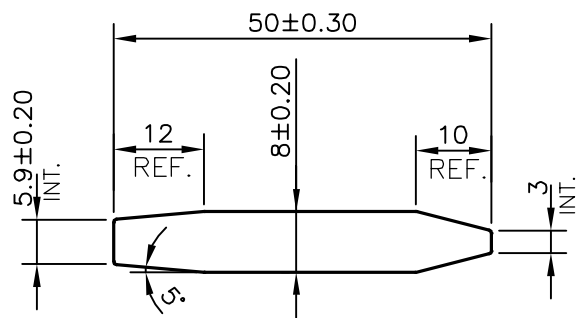


P-15295

S4747



SYMBOL OF QUALITY  
AN ISO 9001 COMPANY

**JINDAL ALUMINIUM LTD.**  
BANGALORE-560073 (INDIA)

	NAME	DATE
DRAWN	J.P.KAUSHIK	07-11-2015
CHECKED		
APPROVED	S.S.GARG	26-11-2015

1. ALL DIMENSIONS ARE IN mm.
2. ROUND OFF ALL SHARP CORNERS WITH 0.40 mm.
3. TOLERANCES WILL BE AS PER IS:3965-1981 , UNLESS OTHERWISE SPECIFIED

SCALE	1:1
AREA mm <sup>2</sup>	362.308
PERIMETER mm.	109.139
WEIGHT kg/m	0.978

PARTY'S NAME	BAJAJ TAMBULA PINNED PRODUCTS PVT. LTD., KOLKATA
PARTY'S DRAWING No.	BT/FS/024/15-16
ALLOY & TEMPER	6082 T6
DESCRIPTION	TEXTILE SECTION

DRAWING No.	SECTION No.
P-15295	-
S4747	S4747