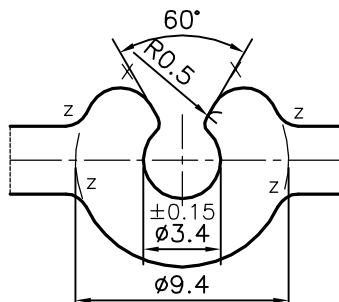
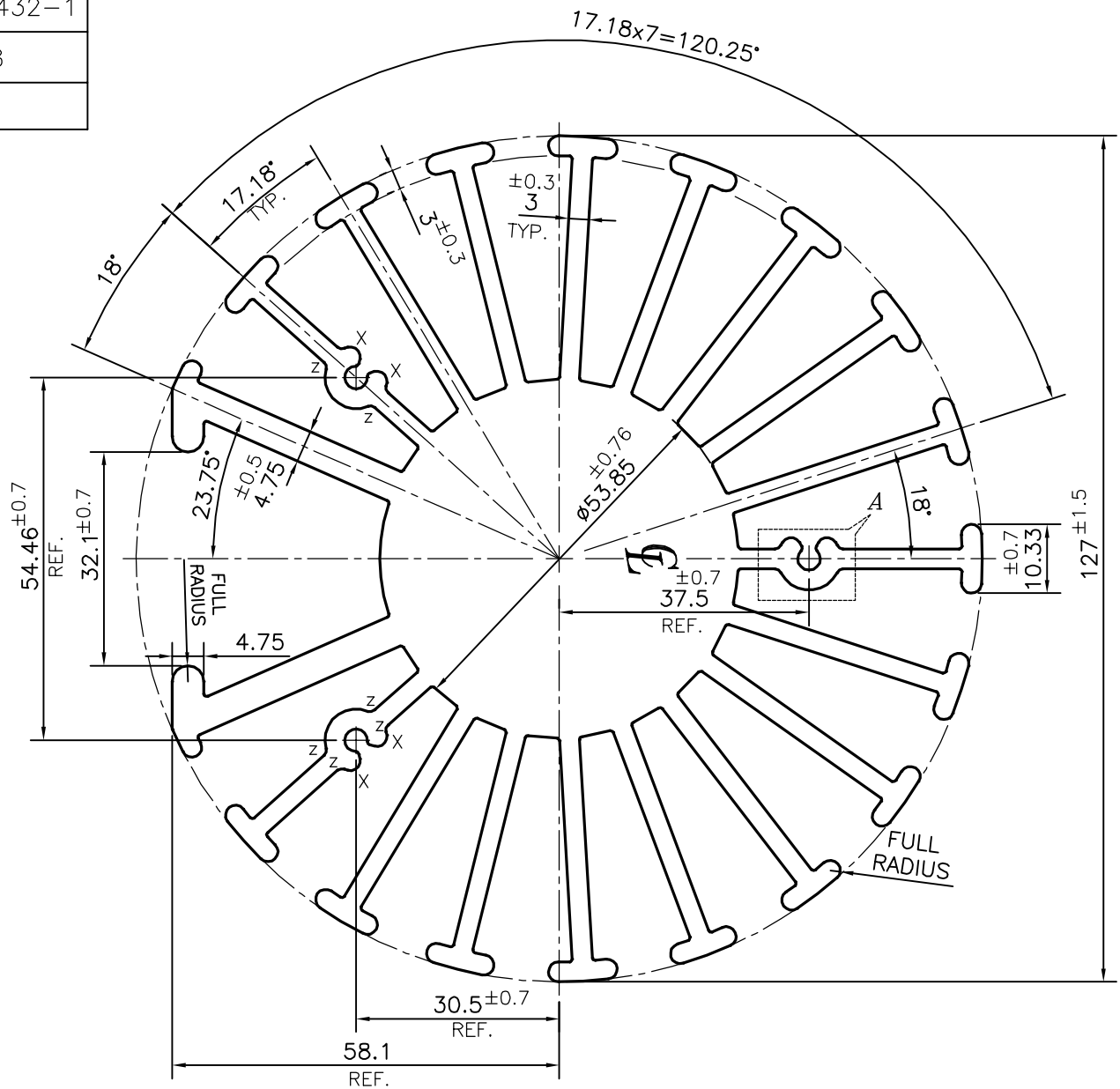


P-15432-1

S4788



DETAIL OF "A"  
SCALE 3:1

X = RADIUS 1.5 mm. (6 PLACES)  
Z = RADIUS 1 mm. (12 PLACES)



SYMBOL OF QUALITY  
AN ISO 9001 COMPANY

**JINDAL ALUMINIUM LTD.**  
BANGALORE-560073 (INDIA)

	NAME	DATE
DRAWN	PARVESH	15-12-2015
CHECKED		
APPROVED	S.S.GARG	21-12-2015
SCALE		1:1
AREA mm <sup>2</sup>		4960.584
PERIMETER mm.		1815.481
WEIGHT kg/m		13.394
DRAWING No.	SECTION No.	
P-15432-1	-	
S4788	S4788	

1. ALL DIMENSIONS ARE IN mm.
2. ROUND OFF ALL SHARP CORNERS WITH 0.40 mm.
3. TOLERANCES WILL BE AS PER IS:3965-1981, UNLESS OTHERWISE SPECIFIED

PARTY'S NAME	AUTO DIECASTING COMPANY, COIMBATORE
PARTY'S DRAWING No.	AS PER AUTOCAD DRAWING-93029240 & REQUIREMENT
ALLOY & TEMPER	6063 T6
DESCRIPTION	ROUND HEAT SINK SECTION