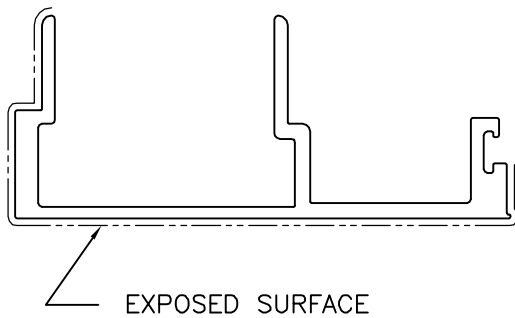
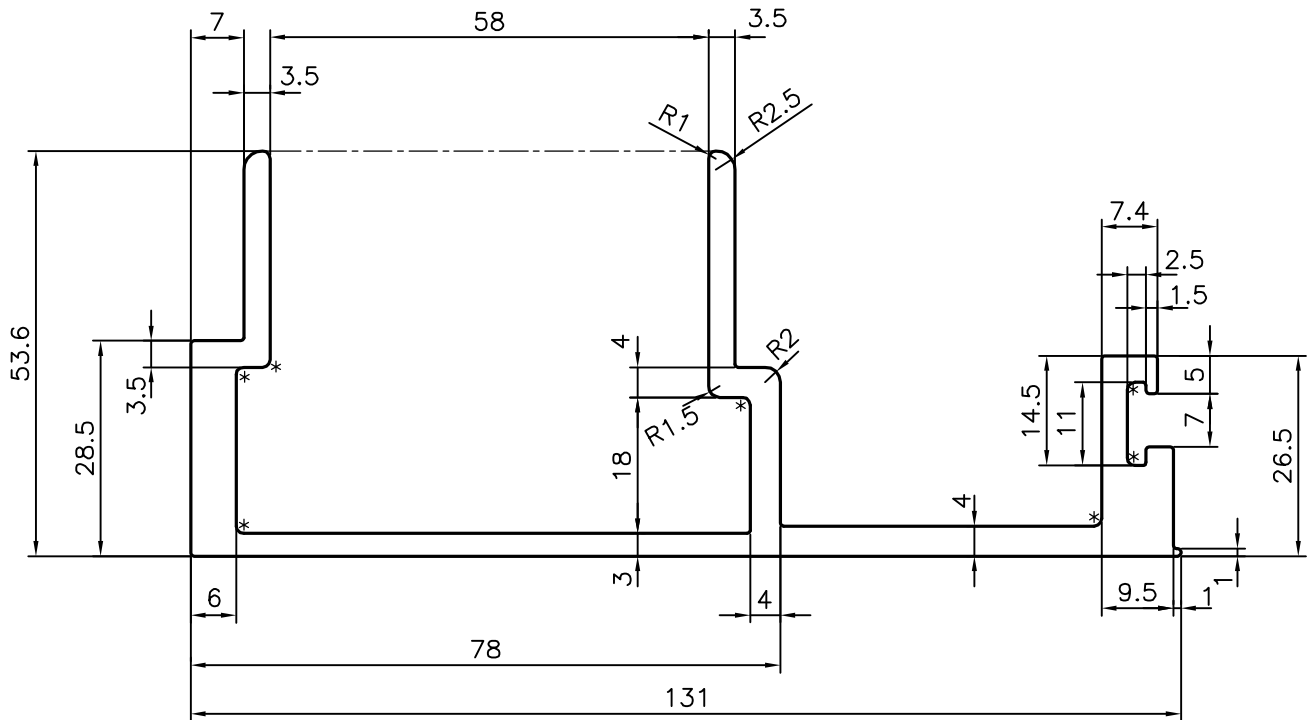


P-15258-1

S4789

TOLERANCE ON THICKNESS $+0.30$
 -0.10
 ANGULARITY = $\pm 2^\circ$



* = 1.0 RADIUS (7 PLACES)



SYMBOL OF QUALITY
 AN ISO 9001 COMPANY

JINDAL ALUMINIUM LTD.
 BANGALORE-560073 (INDIA)

| | NAME | DATE |
|-------------|-----------------|------------|
| DRAWN | J.P.KAUSHIK | 09-11-2015 |
| CHECKED | | |
| APPROVED | S.S.GARG | 22-12-2015 |
| SCALE | | 1:1 |
| AREA | mm ² | 1056.767 |
| PERIMETER | mm. | 540.97 |
| WEIGHT | kg/m | 2.853 |
| DRAWING No. | SECTION No. | |
| P-15258-1 | - | |
| S4789 | S4789 | |

| | |
|---|--|
| 1. ALL DIMENSIONS ARE IN mm. 2. ROUND OFF ALL SHARP CORNERS WITH 0.40 mm. 3. TOLERANCES WILL BE AS PER IS:3965-1981, UNLESS OTHERWISE SPECIFIED | |
| PARTY'S NAME | OMKAR REALTORS & DEVELOPERS PVT. LTD., MUMBAI |
| PARTY'S DRAWING No. | AP-1618 |
| ALLOY & TEMPER | 6063 T6 |
| DESCRIPTION | CURTAIN WALL SECTION |