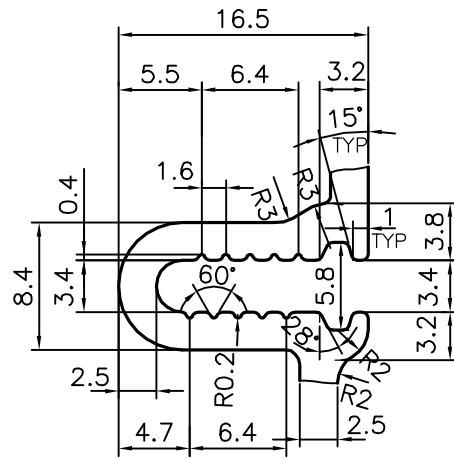
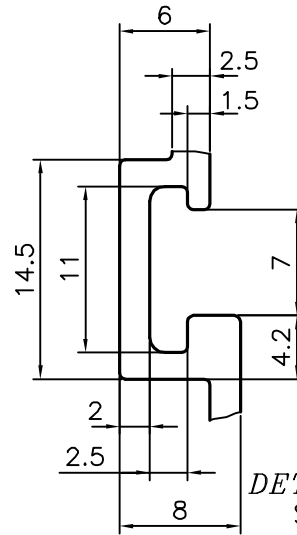


P-15262-1

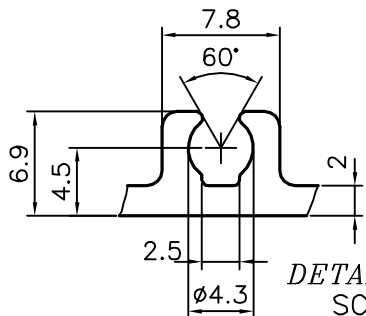
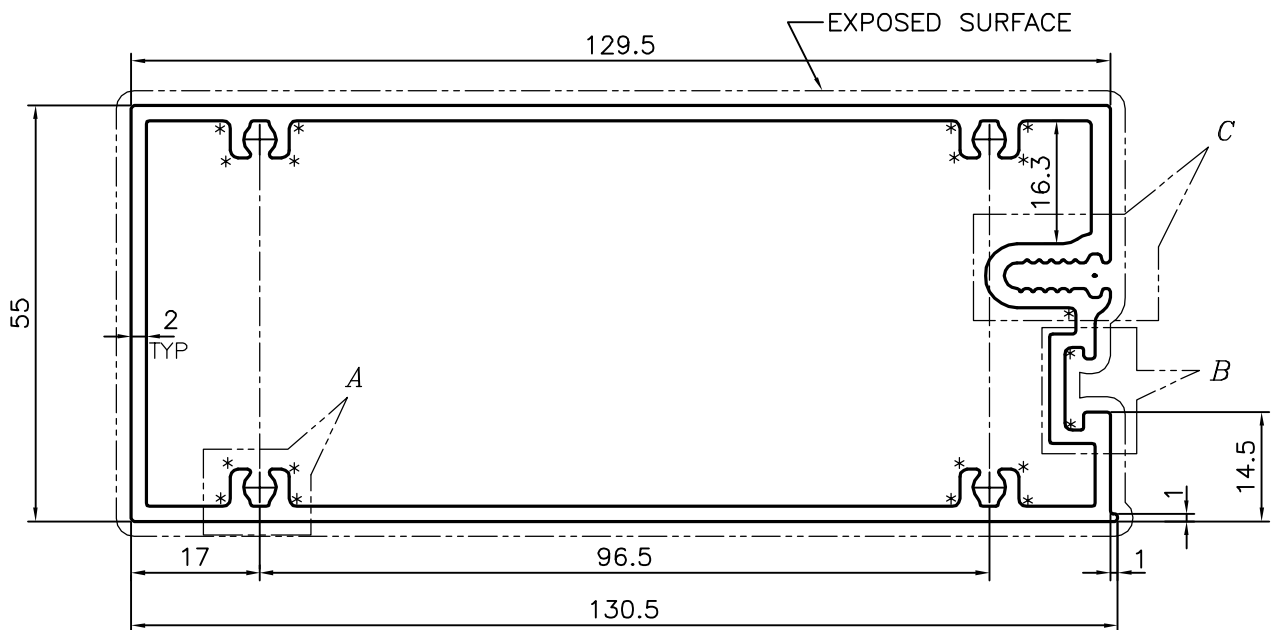
S4793



DETAIL OF "C"
SCALE 2:1



DETAIL OF "B"
SCALE 2:1



DETAIL OF "A"
SCALE 2:1

TOLERANCE ON THICKNESS $+0.30$
 -0.10

ANGULARITY = $\pm 2^\circ$

* = 1.0 RADIUS (19 PLACES)



SYMBOL OF QUALITY
AN ISO 9001 COMPANY

JINDAL ALUMINIUM LTD.
BANGALORE-560073 (INDIA)

	NAME	DATE
DRAWN	J.P.KAUSHIK	09-11-2015
CHECKED		
APPROVED	S.S.GARG	22-12-2015
SCALE		1:1
AREA mm ²		913.229
PERIMETER mm.		419.064
WEIGHT kg/m		2.466
DRAWING No.	SECTION No.	
P-15262-1	-	
S4793	S4793	

1. ALL DIMENSIONS ARE IN mm.
2. ROUND OFF ALL SHARP CORNERS WITH 0.40 mm.
3. TOLERANCES WILL BE AS PER IS:6477-1983, UNLESS OTHERWISE SPECIFIED

PARTY'S NAME	OMKAR REALTORS & DEVELOPERS PVT. LTD., MUMBAI
PARTY'S DRAWING No.	AP-1622
ALLOY & TEMPER	6063 T6
DESCRIPTION	CURTAIN WALL SECTION