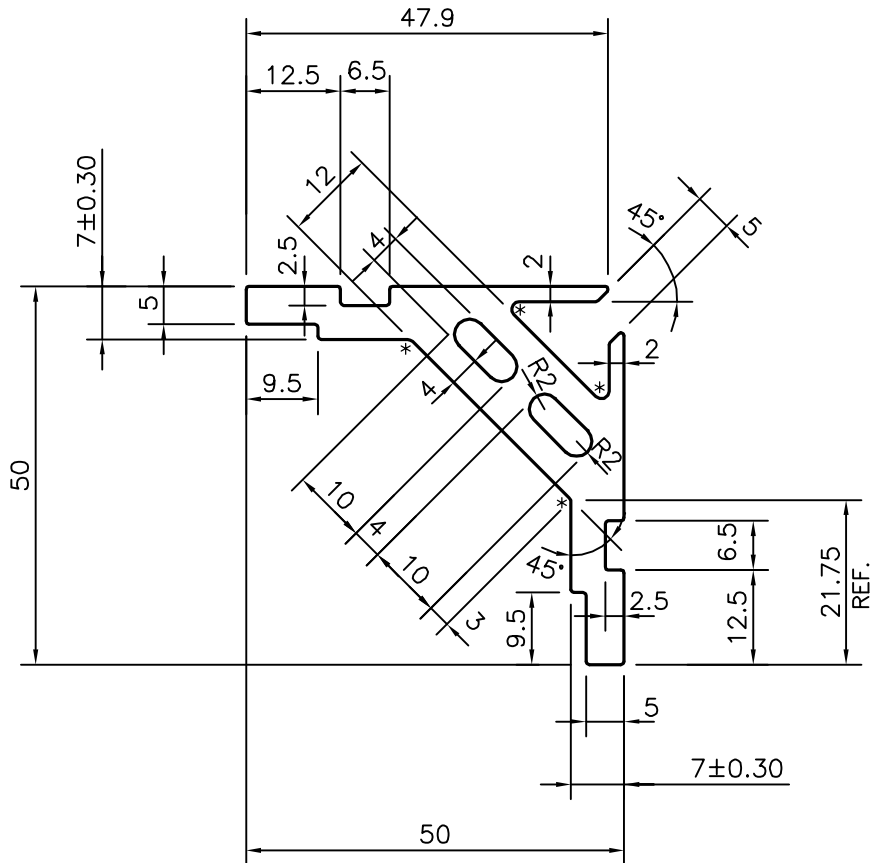


P-15461-1

S4821



1. STRAIGHTNESS=1.7mm/M

2. TWIST=1.7mm/M

* = 1.0 RADIUS(4 PLACES)



SYMBOL OF QUALITY
AN ISO 9002 COMPANY

JINDAL ALUMINIUM LTD.
BANGALORE-560073 (INDIA)

	NAME	DATE
DRAWN	J.P.KAUSHIK	31-12-2015
CHECKED		
APPROVED	S.S.GARG	08-01-2016
SCALE		1:1
AREA mm ²		619.031
PERIMETER mm.		228.03
WEIGHT kg/m		1.671
DRAWING No.	SECTION No.	
P-15461-1	-	
S4821	S4821	

1. ALL DIMENSIONS ARE IN mm.
2. ROUND OFF ALL SHARP CORNERS WITH 0.40 mm.
3. TOLERANCES WILL BE AS PER IS:6477-1983 UNLESS OTHERWISE SPECIFIED

PARTY'S NAME	BRAHMA 3, BANGALORE
PARTY'S DRAWING No.	AS PER AutoCAD DRAWING & OUR PROPOSAL
ALLOY & TEMPER	HE9 WP
DESCRIPTION	MISC. SECTION