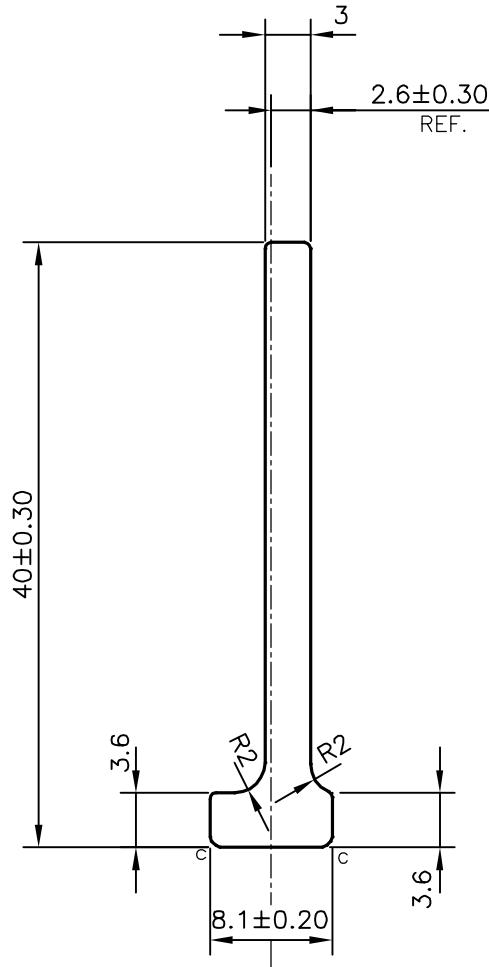


P-15647-1

S4894

1:1



C = CHAMFER 0.5x45° (2 PLACES)



SYMBOL OF QUALITY
AN ISO 9001 COMPANY

JINDAL ALUMINIUM LTD.
BANGALORE-560073 (INDIA)

	NAME	DATE
DRAWN	PARVESH	09-03-2016
CHECKED		
APPROVED	S.S. GARG	04-04-2016

1. ALL DIMENSIONS ARE IN mm.
2. ROUND OFF ALL SHARP CORNERS WITH 0.40 mm.
3. TOLERANCES WILL BE AS PER IS:3965-1981 , UNLESS OTHERWISE SPECIFIED

SCALE	2:1
AREA mm ²	139.571
PERIMETER mm.	93.311
WEIGHT kg/m	0.377

PARTY'S NAME	GLOBAL AUTOTECH LTD., NOIDA	DRAWING No.	P-15647-1	SECTION No.	-
PARTY'S DRAWING No.	TC-EX-325-00		S4894		S4894
ALLOY & TEMPER	DA3103BD 'M'				
DESCRIPTION	BRACKET.CONDENSER SECTION				