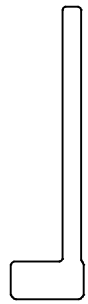
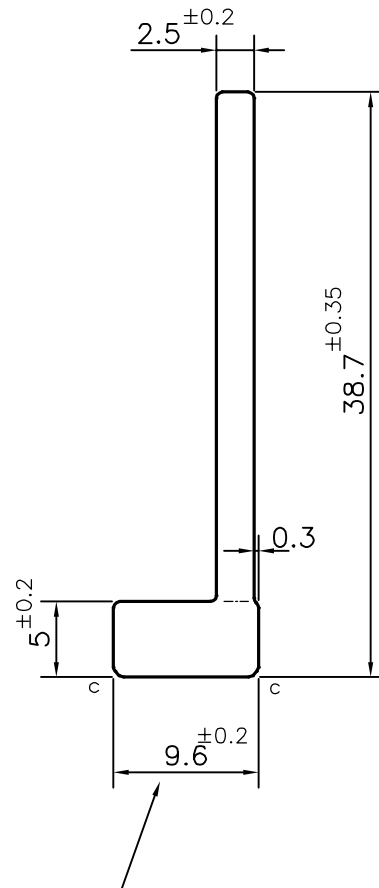


P-15679-1

S4911



SCALE: - 1:1



☞ DIMENSION CHANGED FROM 9.4 TO 9.6 mm.
AS PER CUSTOMER E-MAIL DATED 16-04-2016.

C = CHAMFER 0.5x45° (2 PLACES)



SYMBOL OF QUALITY
AN ISO 9001 COMPANY

JINDAL ALUMINIUM LTD.
BANGALORE-560073 (INDIA)

	NAME	DATE
DRAWN	PARVESH	25-03-2016
CHECKED		
APPROVED	S.S. GARG	16-04-2016
SCALE		2:1
AREA mm ²		131.891
PERIMETER mm.		95.051
WEIGHT kg/m		0.356
DRAWING No.	SECTION No.	
P-15679-1	-	
S4911	S4911	

1. ALL DIMENSIONS ARE IN mm.
2. ROUND OFF ALL SHARP CORNERS WITH 0.40 mm.
3. TOLERANCES WILL BE AS PER IS:3965-1981, UNLESS OTHERWISE SPECIFIED

PARTY'S NAME	GLOBAL AUTOTECH LTD., NOIDA
PARTY'S DRAWING No.	TC-EX-322-00
ALLOY & TEMPER	DA3103BD 'O'
DESCRIPTION	AUTOMOBILE SECTION