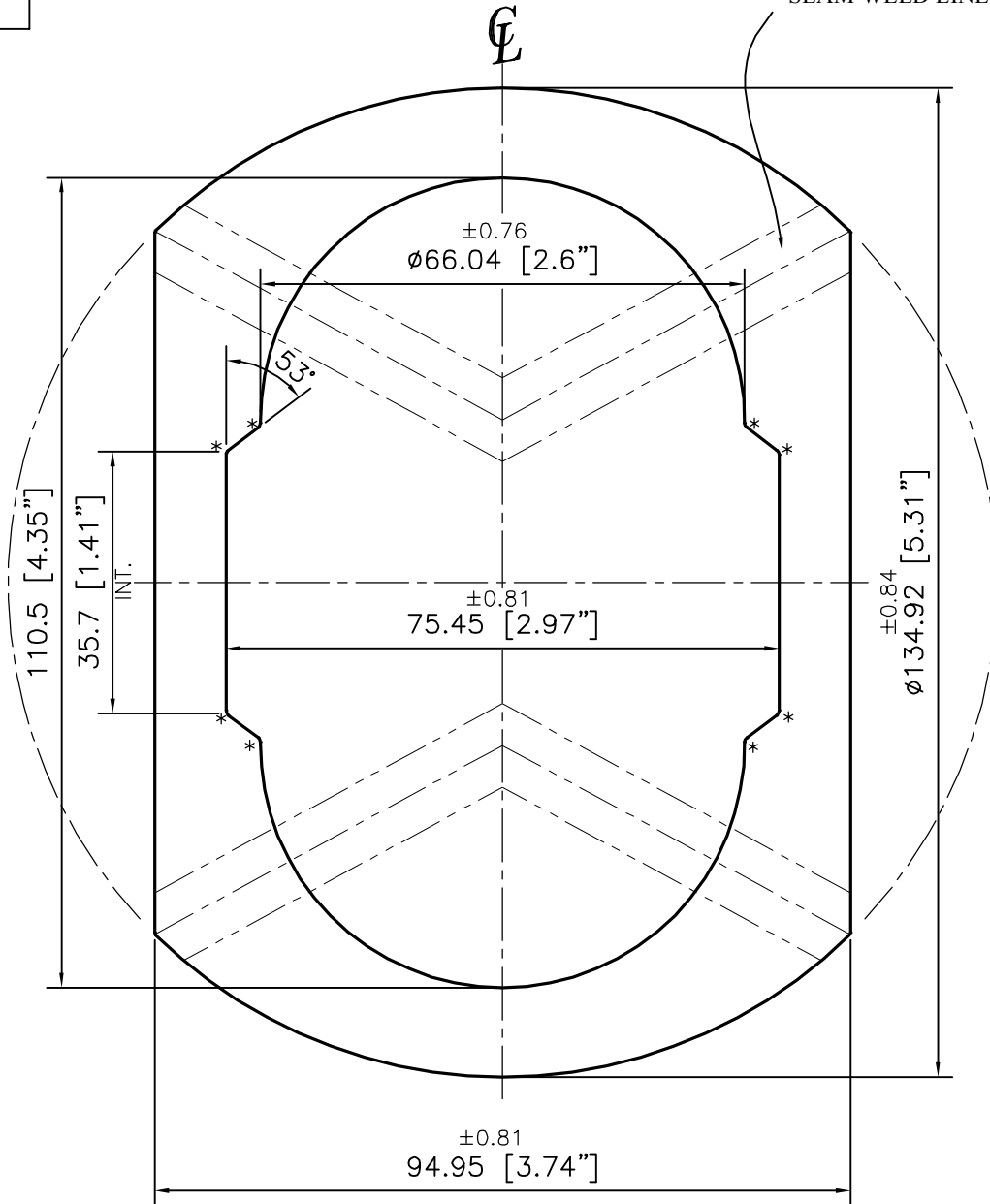


P-15576-2

S4920

APPROXIMATE SEAM WELD LINE



SYMMETRY  $\pm 0.80$  mm MAX.

ANGULARITY =  $\pm 1^\circ$

X = RADIUS 0.76 mm. (8 PLACES)



SYMBOL OF QUALITY  
AN ISO 9001 COMPANY

**JINDAL ALUMINIUM LTD.**  
BANGALORE-560073 (INDIA)

|          | NAME        | DATE       |
|----------|-------------|------------|
| DRAWN    | J.P.KAUSHIK | 27-04-2016 |
| CHECKED  |             |            |
| APPROVED | S.S. GARG   | 29-04-2016 |

1. ALL DIMENSIONS ARE IN mm.
2. ROUND OFF ALL SHARP CORNERS WITH 0.40 mm.
3. TOLERANCES WILL BE AS PER BS:EN-755-9, UNLESS OTHERWISE SPECIFIED

|                      |          |
|----------------------|----------|
| SCALE                | 1:1      |
| AREA mm <sup>2</sup> | 4925.204 |
| PERIMETER mm.        | 402.291  |
| WEIGHT kg/m          | 13.298   |

PARTY'S NAME RABWIN INDUSTRIES PVT. LTD., COIMBATORE

DRAWING No. SECTION No.

PARTY'S DRAWING No. AS PER AUTOCAD DRAWING - C015902

P-15576-2 -  
S4920 S4920

ALLOY & TEMPER 6063 T6

DESCRIPTION ACTUATOR BODY SECTION