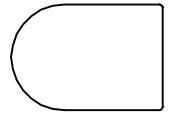
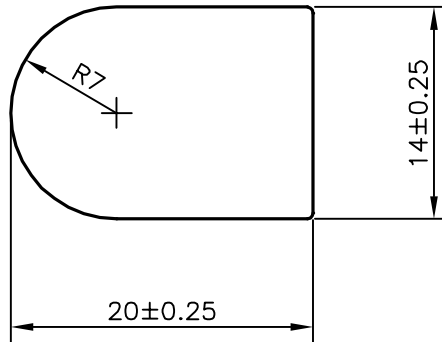


P-15820

S4926



1:1



SYMBOL OF QUALITY
AN ISO 9001 COMPANY

JINDAL ALUMINIUM LTD.
BANGALORE-560073 (INDIA)

	NAME	DATE
DRAWN	J.P.KAUSHIK	02-05-2016
CHECKED		
APPROVED	S.S. GARG	04-05-2016
SCALE		2:1
AREA mm ²		258.9
PERIMETER mm.		61.648
WEIGHT kg/m		0.699
DRAWING No.	SECTION No.	

1. ALL DIMENSIONS ARE IN mm.
2. ROUND OFF ALL SHARP CORNERS WITH 0.40 mm.
3. TOLERANCES WILL BE AS PER IS:3965-1981 UNLESS OTHERWISE SPECIFIED

PARTY'S NAME	YOONWOO AUTOMOTIVE INDIA PVT. LTD., PUNE
ISSUE No.	AS PER DRAWING
ALLOY & TEMPER	6061 T6
DESCRIPTION	W201 LIQUID CHARGE PORT CONNECTOR

P-15820	-
S4926	S4926