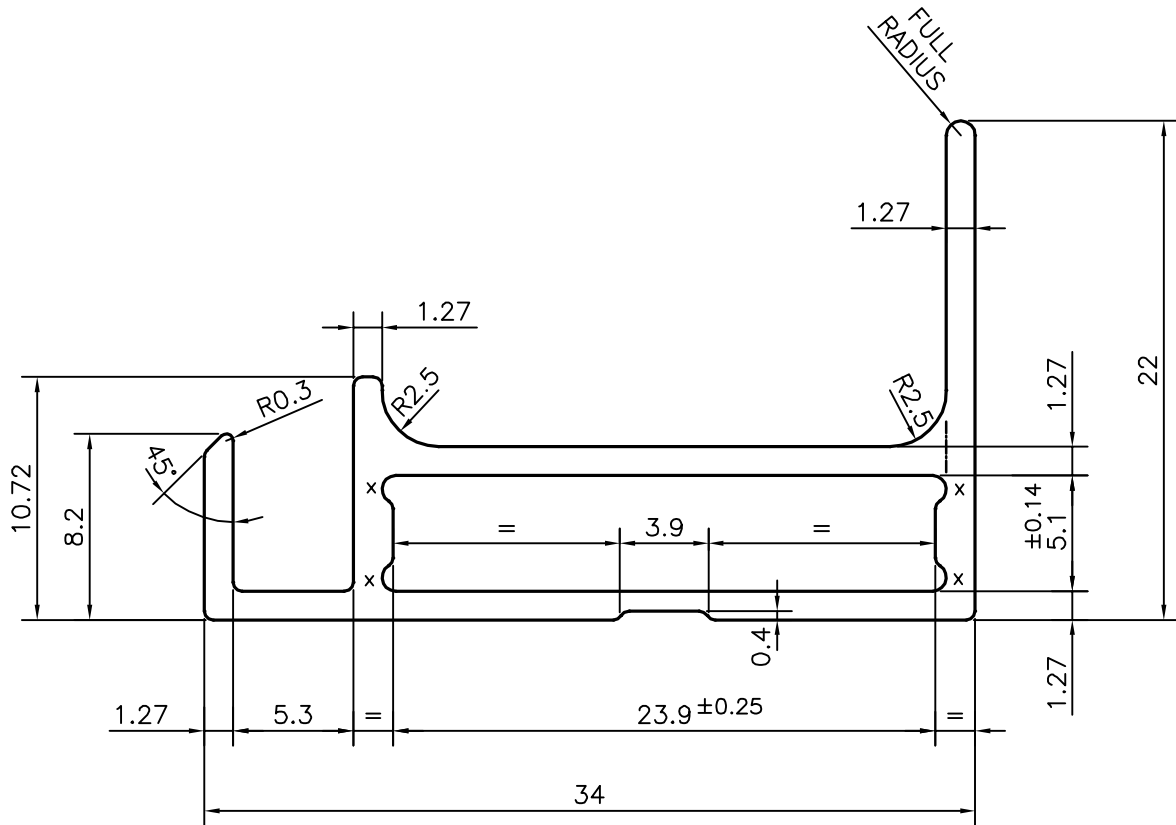
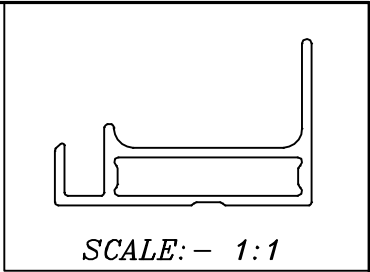


P-15651
S5042



X = RADIUS 0.6 mm. (4 PLACES)

<p>SYMBOL OF QUALITY AN ISO 9001 COMPANY</p>	<p>JINDAL ALUMINIUM LTD. BANGALORE-560073 (INDIA)</p>	NAME	DATE	
		DRAWN	PARVESH	10-03-2016
<p>1. ALL DIMENSIONS ARE IN mm. 2. ROUND OFF ALL SHARP CORNERS WITH 0.40 mm. 3. TOLERANCES WILL BE AS PER IS:6477-1983 , UNLESS OTHERWISE SPECIFIED</p>		CHECKED		
		APPROVED	S.S. GARG	21-07-2016
<p>PARTY'S NAME</p> <p>ALEENA SOLAR PVT. LTD., KOLKATA</p>		SCALE		3:1
		AREA mm ²		125.706
<p>PARTY'S DRAWING No.</p> <p>MODIFIED OF SECTION No. 26272</p>		PERIMETER mm.		127.934
		WEIGHT kg/m		0.339
<p>ALLOY & TEMPER</p> <p>6063 T6</p>		DRAWING No.	SECTION No.	
		P-15651	-	
<p>DESCRIPTION</p> <p>SOLAR SECTION</p>		S5042	S5042	