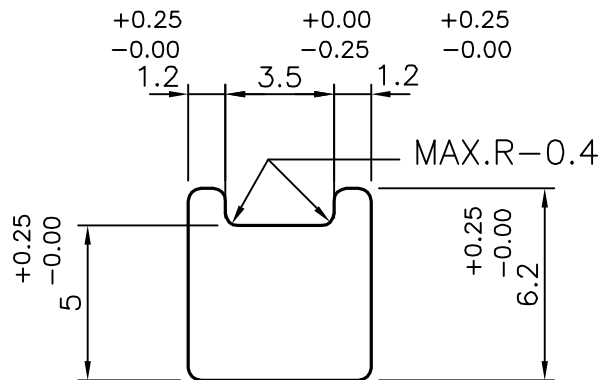


P-16332

S5093



1:1



1. FLATNESS:-  $\pm 0.5$  mm
2. STRAIGHTNESS:-  $\pm 1.0$  mm / M



SYMBOL OF QUALITY  
AN ISO 9001 COMPANY

**JINDAL ALUMINIUM LTD.**  
**BANGALORE-560073 (INDIA)**

	NAME	DATE
DRAWN	J.P.KAUSHIK	16-09-2016
CHECKED		
APPROVED	S.S. GARG	20-09-2016
SCALE		4:1
AREA mm <sup>2</sup>		32.243
PERIMETER mm.		25.227
WEIGHT kg/m		0.087

1. ALL DIMENSIONS ARE IN mm.
2. ROUND OFF ALL SHARP CORNERS WITH 0.40 mm.
3. TOLERANCES WILL BE AS PER IS:3965-1981 UNLESS OTHERWISE SPECIFIED

PARTY'S NAME ADELTA OPTEC, YAMUNANAGAR

PARTY'S DRAWING No. AS PER 27732

ALLOY & TEMPER 6063 T6

DESCRIPTION MECHANICAL STAGE SLIDE 3

DRAWING No.	SECTION No.
P-16332	-
S5093	S5093