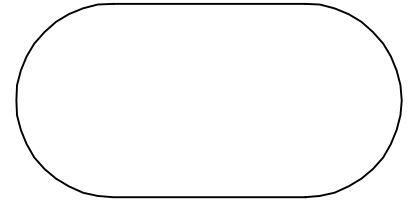


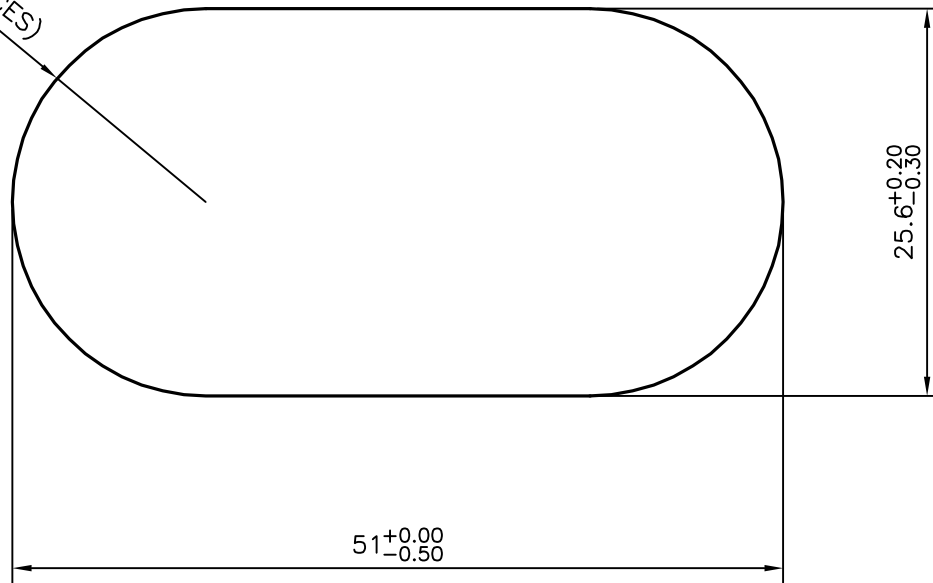
P-16386

S5105



SCALE 1:1

R12.8 (2 PLACES)



ISSUE-2 :

TOLERANCES CHANGED FROM $51.0^{+0.0}_{-0.6}$ TO $51.0^{+0.0}_{-0.5}$ &
 $25.6^{+0.0}_{-0.5}$ TO $25.6^{+0.2}_{-0.3}$ AS PER CUSTOMER REQUIREMENT



SYMBOL OF QUALITY
AN ISO 9001 COMPANY

JINDAL ALUMINIUM LTD.
BANGALORE-560073 (INDIA)

	NAME	DATE
DRAWN	KIRAN	09-12-2016
CHECKED		
APPROVED	B.NATARAJ	12-12-2016
SCALE		2:1
AREA mm ²		1164.959
PERIMETER mm.		131.225
WEIGHT kg/m		3.145
DRAWING No.	SECTION No.	
P-16386	-	
S5105	S5105(ISSUE-2)	

1. ALL DIMENSIONS ARE IN mm.
2. ROUND OFF ALL SHARP CORNERS WITH 0.40 mm.
3. TOLERANCES WILL BE AS PER IS:3965-1981, UNLESS OTHERWISE SPECIFIED

PARTY'S NAME	GLOBAL AUTOTECH LTD., NOIDA
PARTY'S DRAWING No.	TC-EX-022-00
ALLOY & TEMPER	6061 T6
DESCRIPTION	TUBE CONNECTOR SECTION