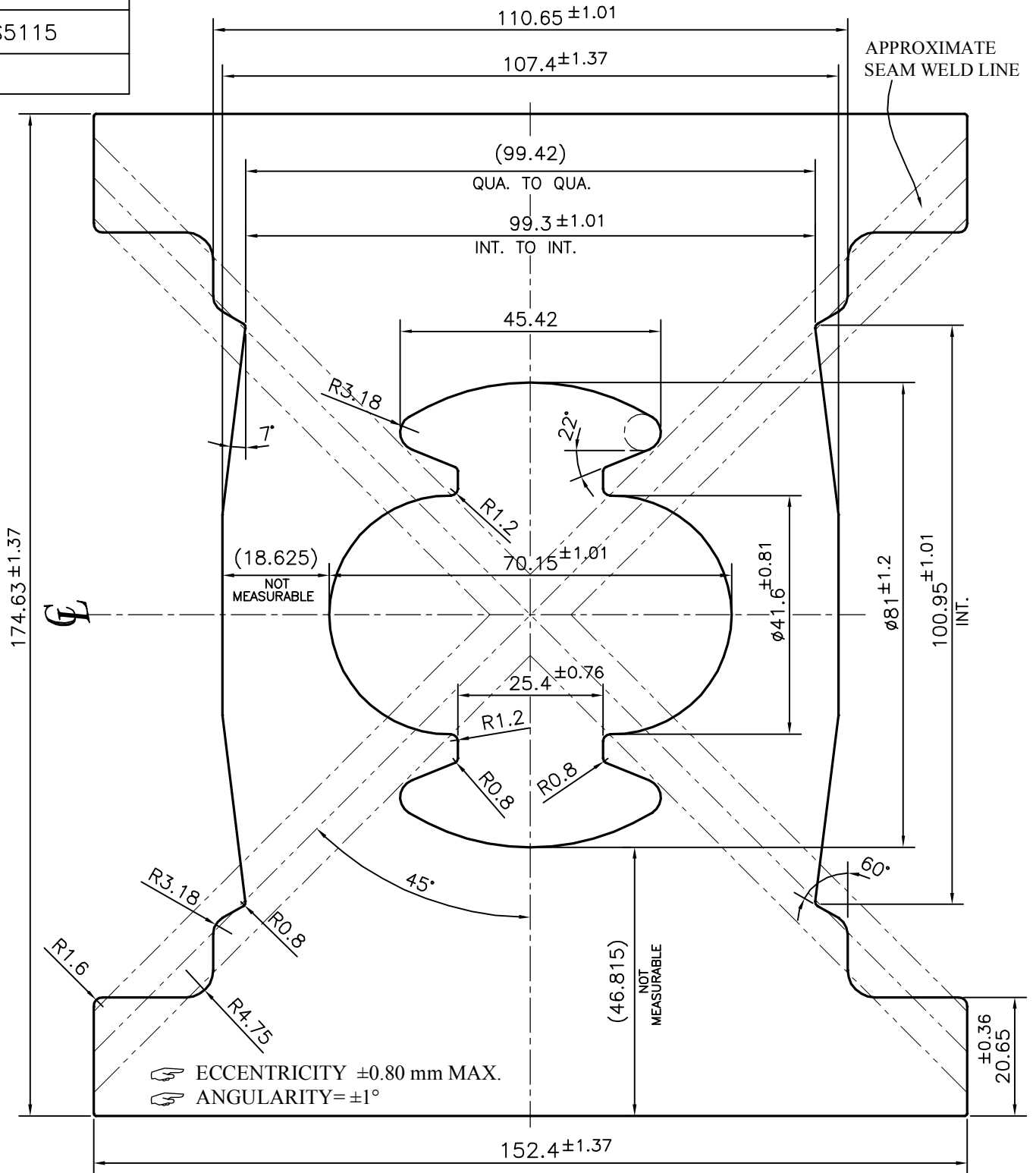


P-15577-2

S5115



ECCENTRICITY ± 0.80 mm MAX.
 ANGULARITY $\pm 1^\circ$



SYMBOL OF QUALITY
AN ISO 9001 COMPANY

JINDAL ALUMINIUM LTD.
BANGALORE-560073 (INDIA)

	NAME	DATE
DRAWN	PARVESH	31-08-2016
CHECKED		
APPROVED	B. NATRAJ	18-10-2016
SCALE		1:1
AREA	mm ²	16573.811
PERIMETER	mm.	738.207
WEIGHT	kg/m	44.749
DRAWING No.	SECTION No.	
P-15577-2	-	
S5115	S5115	

1. ALL DIMENSIONS ARE IN mm.
2. ROUND OFF ALL SHARP CORNERS WITH 0.40 mm.
3. TOLERANCES WILL BE AS PER BS:EN-755-9, UNLESS OTHERWISE SPECIFIED

PARTY'S NAME	RABWIN INDUSTRIES PVT. LTD., COIMBATORE
PARTY'S DRAWING No.	AS PER CUSTOMER REQUIREMENT-C015853
ALLOY & TEMPER	6063 T6
DESCRIPTION	ACTUATOR BODY SECTION