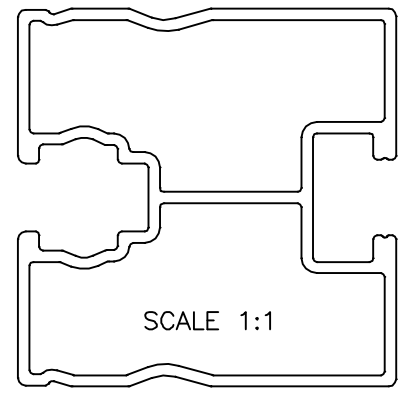
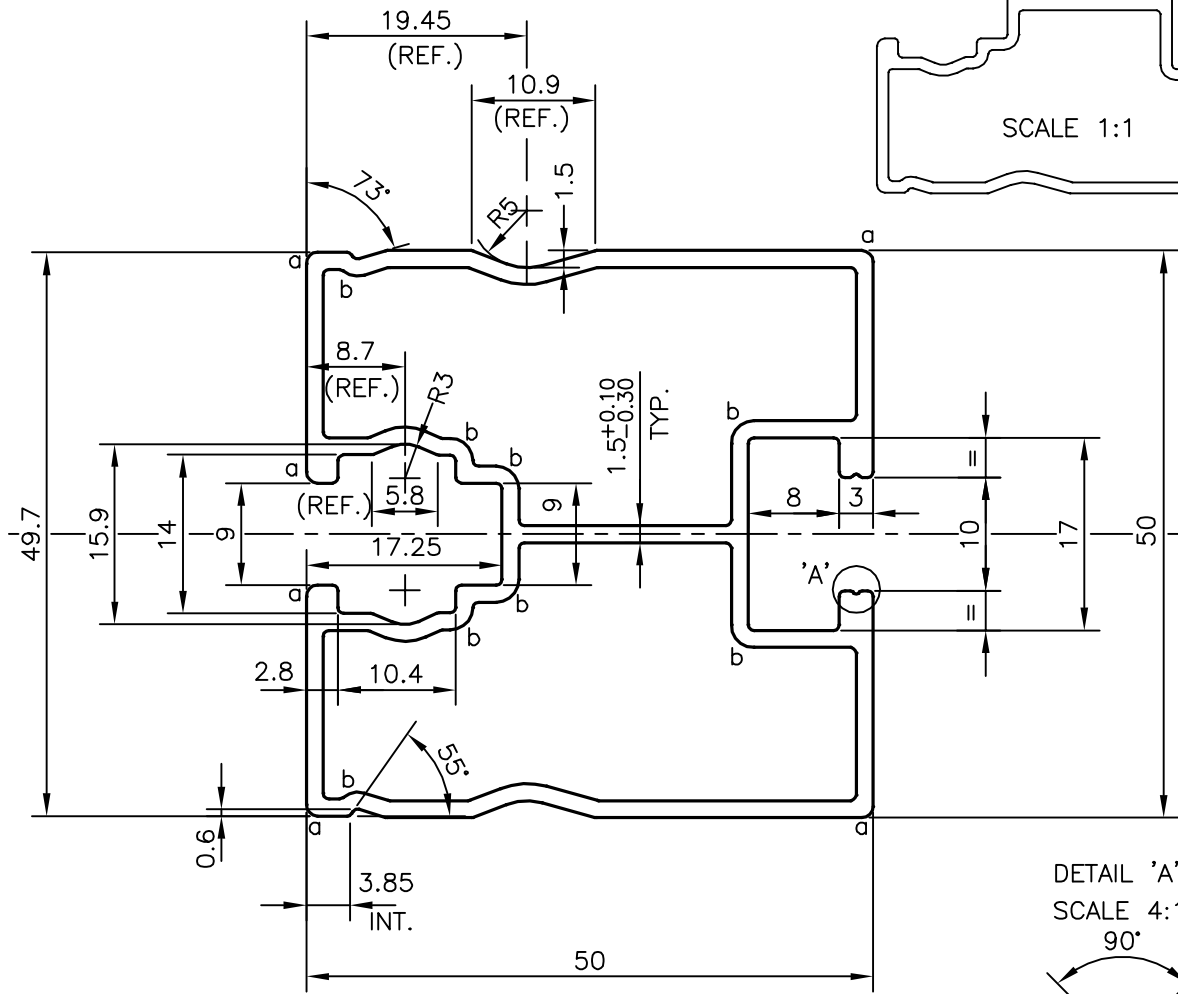


P-16439

S5164



a : RADIUS 1.00 mm (6 PLACES)
 b : RADIUS 2.00 mm (8 PLACES)

TOLERANCES ON OVERALL WIDTHS & WIDTHS ACROSS FLATS OF BARS, & REGULAR SECTIONS

UPTO 6.40mm - ±0.20	UPTO 32.0mm - ±0.38	UPTO 120.0mm - ±0.85	1. STRAIGHTNESS=1.7mm/M 2. TWIST=1.7mm/M 3. ANGULARITY= ±2° 4. FLATNESS =0.007xWIDTH
UPTO 10.0mm - ±0.23	UPTO 50.0mm - ±0.46	UPTO 160.0mm - ±1.02	
UPTO 12.0mm - ±0.25	UPTO 60.0mm - ±0.53	UPTO 200.0mm - ±1.14	
UPTO 16.0mm - ±0.28	UPTO 80.0mm - ±0.69	UPTO 250.0mm - ±1.40	
UPTO 25.0mm - ±0.30	UPTO 100.0mm - ±0.75	UPTO 300.0mm - ±1.65	

<p>SYMBOL OF QUALITY AN ISO 9001 COMPANY</p>	<p>JINDAL ALUMINIUM LTD. BANGALORE-560073 (INDIA)</p>	DRAWN	KIRAN	DATE	27-10-2016
		CHECKED			
		APPROVED	B.NATARAJ		04-11-2016
1. ALL DIMENSIONS ARE IN mm. 2. ROUND OFF ALL SHARP CORNERS WITH 0.50 mm. 3. TOLERANCES WILL BE AS PER IS:6477-1983, UNLESS OTHERWISE SPECIFIED		SCALE		1.5:1	
		AREA mm ²		435.74	
		PERIMETER mm.		276.359	
		WEIGHT kg/m		1.176	
		DRAWING No.		SECTION No.	
PARTY'S NAME		INSOLARE ENERGY PVT. LTD., BANGALORE			
PARTY'S DRAWING No.		INF-BLR-CIV-DWG-002 (AutoCAD DRAWING)			
ALLOY & TEMPER		6063 T6			
DESCRIPTION		SOLAR SECTION			
		P-16439		S5164	
		S5164		S5164	