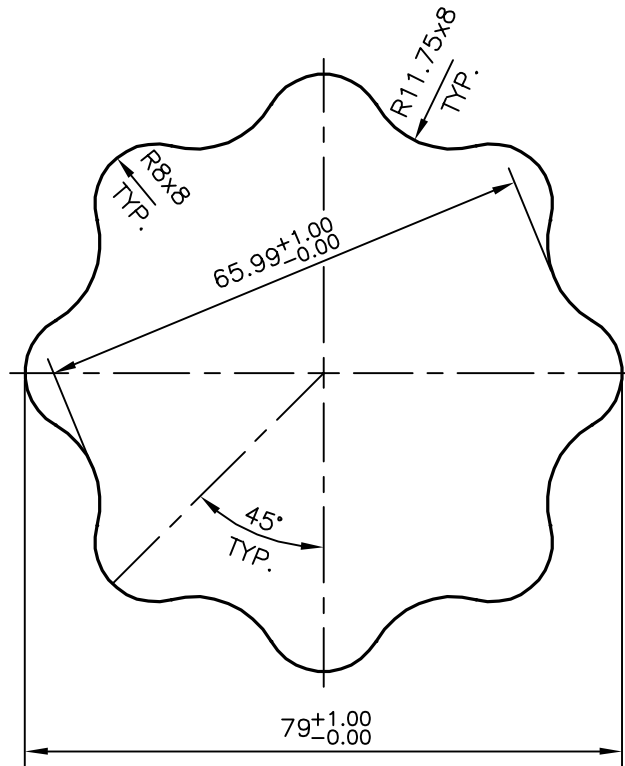


P-16572

S5205



TOLERANCES ON OVERALL WIDTHS & WIDTHS ACROSS FLATS OF BARS, & REGULAR SECTIONS

| | | | |
|---------------------|----------------------|----------------------|---|
| UPTO 6.40mm - ±0.20 | UPTO 32.0mm - ±0.38 | UPTO 120.0mm - ±0.85 | 1. STRAIGHTNESS=1.7mm/M 2. TWIST=1.7mm/M 3. ANGULARITY= ±2° 4. FLATNESS =0.007xWIDTH |
| UPTO 10.0mm - ±0.23 | UPTO 50.0mm - ±0.46 | UPTO 160.0mm - ±1.02 | |
| UPTO 12.0mm - ±0.25 | UPTO 60.0mm - ±0.53 | UPTO 200.0mm - ±1.14 | |
| UPTO 16.0mm - ±0.28 | UPTO 80.0mm - ±0.69 | UPTO 250.0mm - ±1.40 | |
| UPTO 25.0mm - ±0.30 | UPTO 100.0mm - ±0.75 | UPTO 300.0mm - ±1.65 | |



SYMBOL OF QUALITY
AN ISO 9001 COMPANY

JINDAL ALUMINIUM LTD.
BANGALORE-560073 (INDIA)

| | NAME | DATE |
|----------|-----------|------------|
| DRAWN | KIRAN | 01-12-2016 |
| CHECKED | | |
| APPROVED | B.NATARAJ | 05-12-2016 |

1. ALL DIMENSIONS ARE IN mm.
2. ROUND OFF ALL SHARP CORNERS WITH 0.50 mm.
3. TOLERANCES WILL BE AS PER IS:3965-1981, UNLESS OTHERWISE SPECIFIED

| | |
|----------------------|----------|
| SCALE | 1:1 |
| AREA mm ² | 4127.285 |
| PERIMETER mm. | 257.723 |
| WEIGHT kg/m | 11.144 |

| | |
|---------------------|--|
| PARTY'S NAME | OBLUM ELECTRICAL INDUSTRIES PVT. LTD., HYDERABAD |
| PARTY'S DRAWING No. | AS PER DRAWING-PBC2-T8-TB-M84 |
| ALLOY & TEMPER | HE30 WP |
| DESCRIPTION | M-84 TERMINAL BLOCK SECTION |

| | |
|-------------|-------------|
| DRAWING No. | SECTION No. |
| P-16572 | |
| S5205 | S5205 |
| | |
| | |