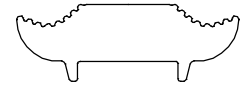


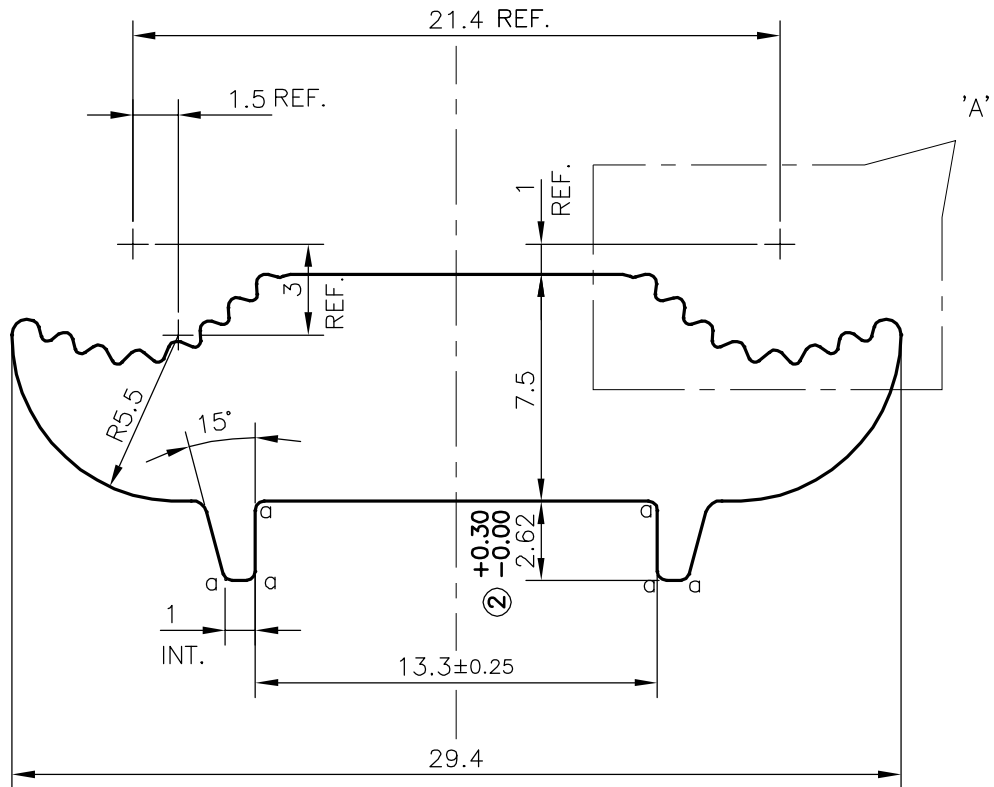
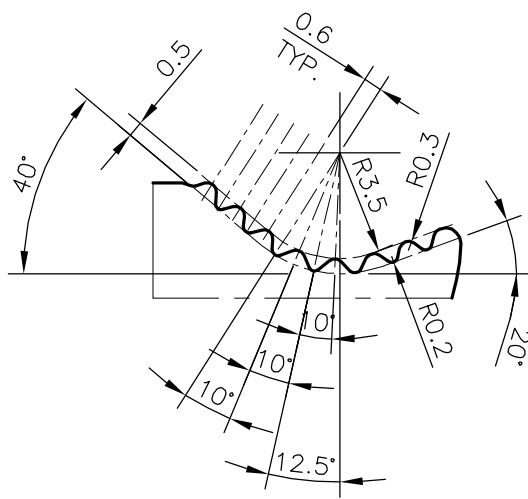
P-16570

S5209



SCALE 1:1

DETAIL 'A'  
SCALE 4:1



ISSUE-2

DIMENSION CHANGED FROM 2.5 mm TO 2.62<sup>+0.30/-0.00</sup> mm & TOLERANCE ADDED

WEIGHT CHANGED FROM 0.488 TO 0.489 kg/m

a : RADIUS 0.30 mm (6 PLACES)

TOLERANCES ON OVERALL WIDTHS & WIDTHS ACROSS FLATS OF BARS, & REGULAR SECTIONS

UPTO 6.40mm - ±0.20	UPTO 32.0mm - ±0.38	UPTO 120.0mm - ±0.85	1. STRAIGHTNESS=1.7mm/M 2. TWIST=1.7mm/M 3. ANGULARITY= ±2° 4. FLATNESS =0.007xWIDTH
UPTO 10.0mm - ±0.23	UPTO 50.0mm - ±0.46	UPTO 160.0mm - ±1.02	
UPTO 12.0mm - ±0.25	UPTO 60.0mm - ±0.53	UPTO 200.0mm - ±1.14	
UPTO 16.0mm - ±0.28	UPTO 80.0mm - ±0.69	UPTO 250.0mm - ±1.40	
UPTO 25.0mm - ±0.30	UPTO 100.0mm - ±0.75	UPTO 300.0mm - ±1.65	



SYMBOL OF QUALITY  
AN ISO 9001 COMPANY

**JINDAL ALUMINIUM LTD.**  
BANGALORE-560073 (INDIA)

	NAME	DATE
DRAWN	J.P.KAUSHIK	22-01-2020
CHECKED		
APPROVED	B.NATARAJA	27-01-2020

1. ALL DIMENSIONS ARE IN mm.
2. ROUND OFF ALL SHARP CORNERS WITH 0.50 mm.
3. TOLERANCES WILL BE AS PER IS:3965-1981, UNLESS OTHERWISE SPECIFIED

SCALE	4:1
AREA mm <sup>2</sup>	181.103
PERIMETER mm.	82.656
WEIGHT kg/m	0.489

PARTY'S NAME	SICAME INDIA CONNECTORS PVT. LTD., BANGALORE	DRAWING No.	P-16570	SECTION No.	
PARTY'S DRAWING No.	AS PER DRAWING-F10088336 A		S5209		S5209(ISSUE-2)
ALLOY & TEMPER	6005A T6				
DESCRIPTION	ELECTRICAL SECTION-LOWER BODY				