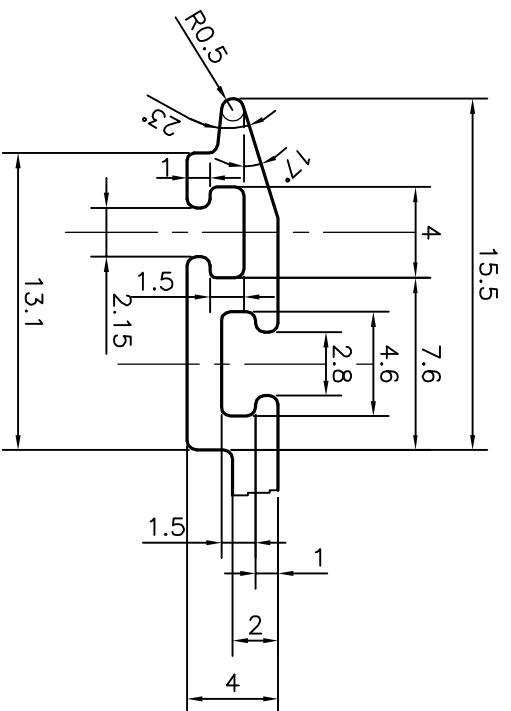
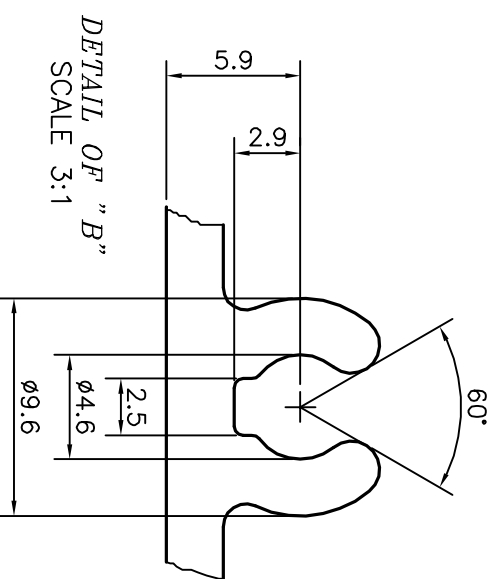


* = RADIUS 1 mm. (10 PLACES)
F = FULL RADIUS (8 PLACES)



DETAIL OF "A"
SCALE 3:1



DETAIL OF "B"
SCALE 3:1

TOLERANCES ON OVERALL WIDTHS & WIDTHS ACROSS FLATS OF BARS, & REGULAR SECTIONS		UPTO 320.00mm - ±1.70	
UPTO 6.40mm - ±0.20	UPTO 32.0mm - ±0.38	UPTO 120.0mm - ±0.85	
UPTO 10.0mm - ±0.23	UPTO 50.0mm - ±0.46	UPTO 160.0mm - ±1.02	
UPTO 12.0mm - ±0.25	UPTO 60.0mm - ±0.53	UPTO 200.0mm - ±1.14	
UPTO 16.0mm - ±0.28	UPTO 80.0mm - ±0.69	UPTO 250.0mm - ±1.40	
UPTO 25.0mm - ±0.30	UPTO 100.0mm - ±0.75	UPTO 300.0mm - ±1.65	

<p>SYMBOL OF QUALITY AN ISO 9001 COMPANY</p>		<p>JINDAL ALUMINIUM LTD. BANGALORE-560073 (INDIA)</p>	
<p>1. ALL DIMENSIONS ARE IN mm. 2. ROUND OFF ALL SHARP CORNERS WITH 0.40 mm. 3. TOLERANCES WILL BE AS PER IS:3965-1981, UNLESS OTHERWISE SPECIFIED</p>		<p>SCALE 1:1</p>	
PARTY'S NAME	GLOBAL SYNDICATE, BANGALORE	WEIGHT kg/m	3.380
PARTY'S DRAWING No.	AS PER DRAWING-SOB/LULU/SE104	PERIMETER mm.	987.343
ALLOY & TEMPER	6063 T6	AREA mm ²	1251.826
DESCRIPTION	CURTAIN WALL SECTION	DRAWING No.	3.380
		SECTION No.	