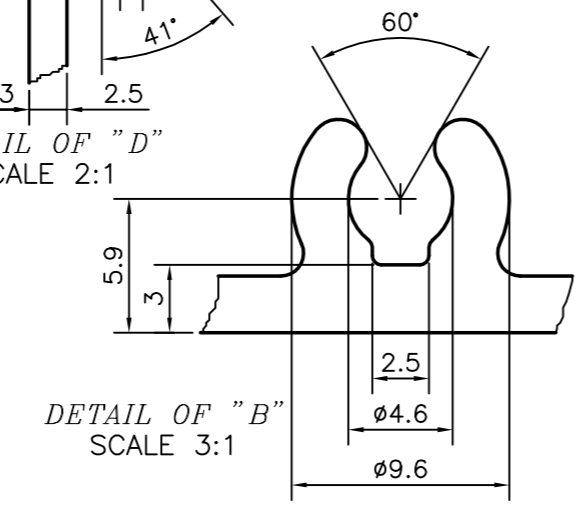
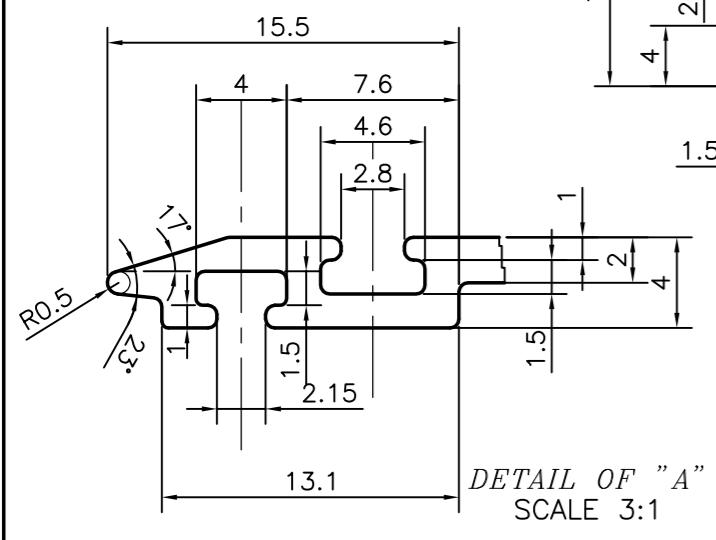
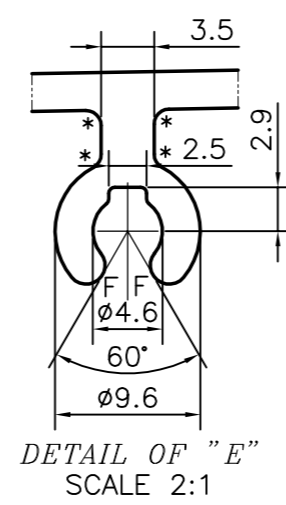
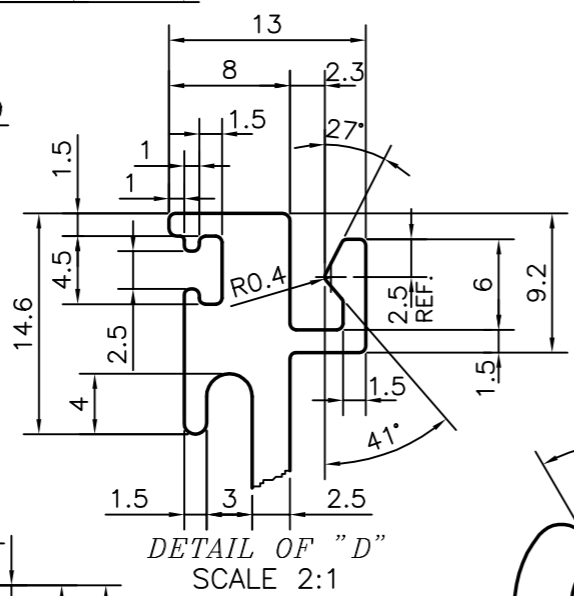
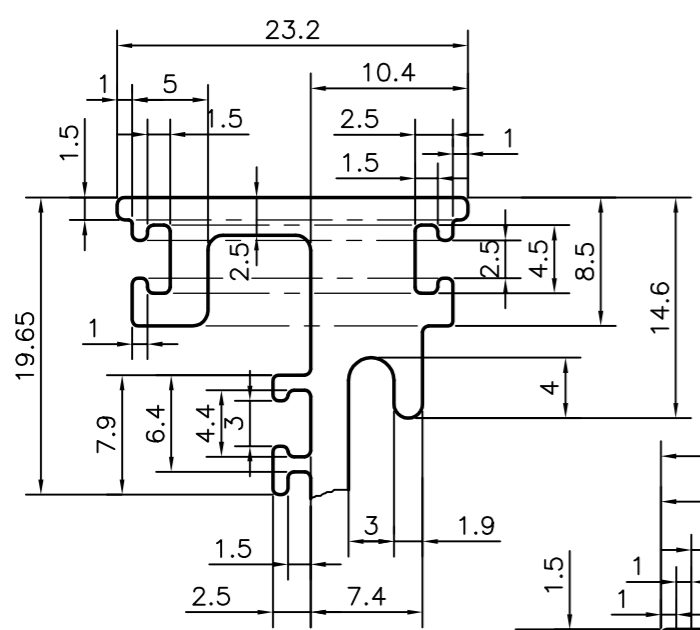
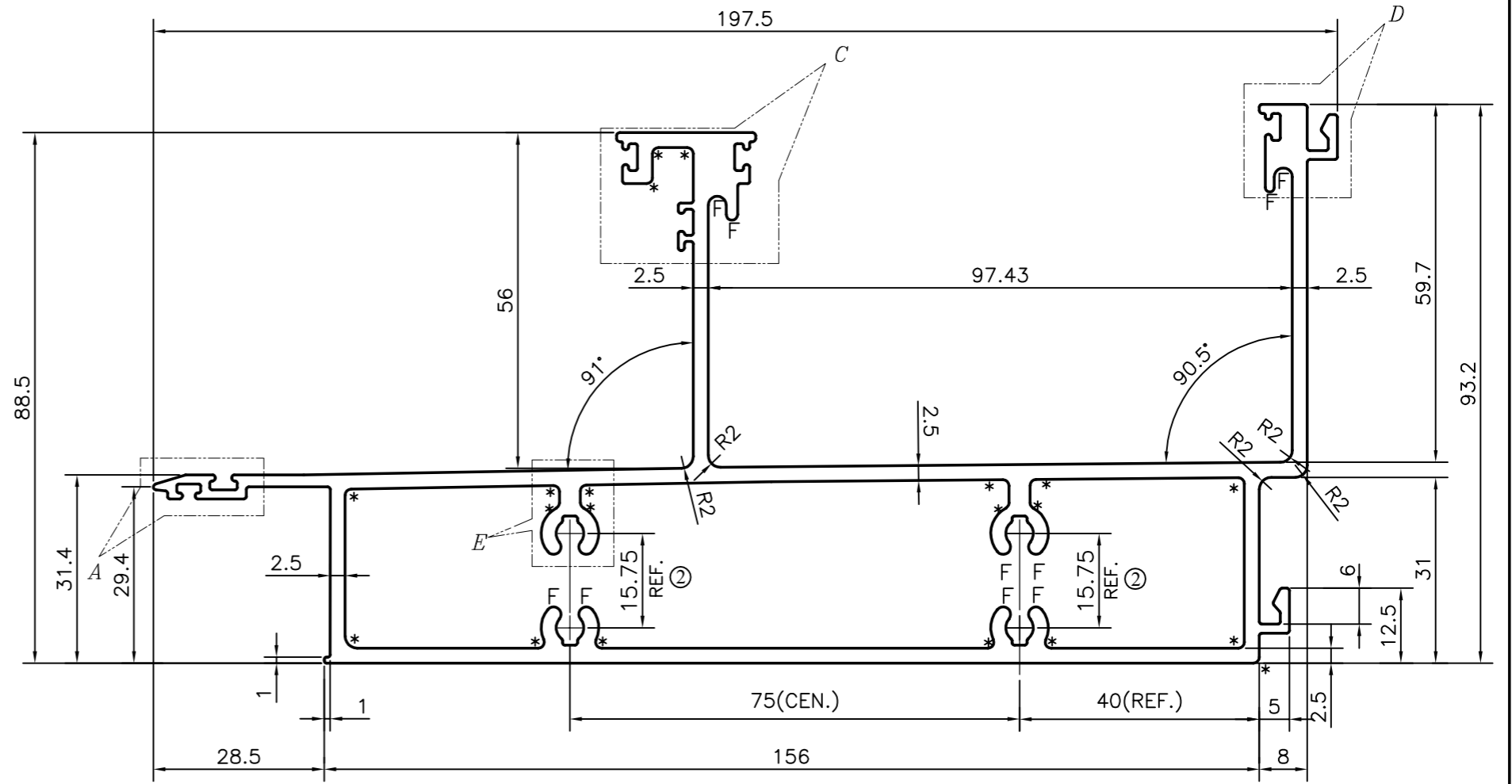
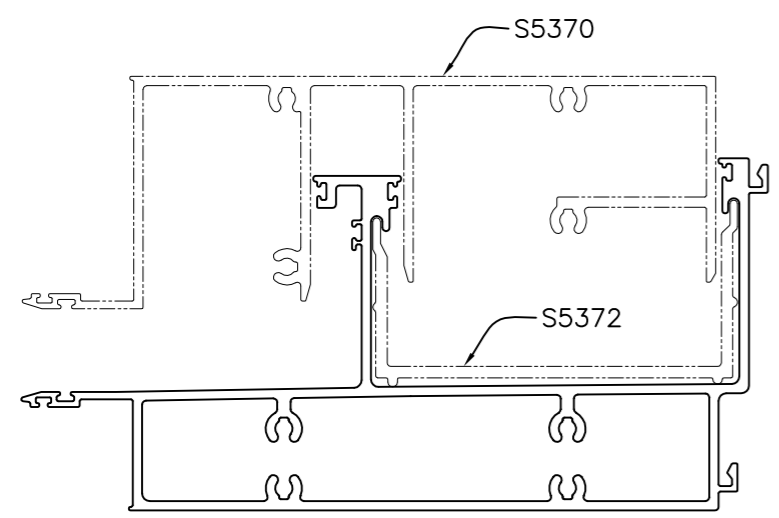


P-16909-1
S5371



ISSUE-2
TWO SCREW BOX LOCATION CHANGED.

* = RADIUS 1 mm. (16 PLACES)
F = FULL RADIUS (16 PLACES)

TOLERANCES ON OVERALL WIDTHS & WIDTHS ACROSS FLATS OF BARS, & REGULAR SECTIONS			
UPTO 6.40mm - ±0.20	UPTO 32.0mm - ±0.38	UPTO 120.0mm - ±0.85	UPTO 320.00mm - ±1.70
UPTO 10.0mm - ±0.23	UPTO 50.0mm - ±0.46	UPTO 160.0mm - ±1.02	
UPTO 12.0mm - ±0.25	UPTO 60.0mm - ±0.53	UPTO 200.0mm - ±1.14	
UPTO 16.0mm - ±0.28	UPTO 80.0mm - ±0.69	UPTO 250.0mm - ±1.40	
UPTO 25.0mm - ±0.30	UPTO 100.0mm - ±0.75	UPTO 300.0mm - ±1.65	

<p>SYMBOL OF QUALITY AN ISO 9001 COMPANY</p>	<p>JINDAL ALUMINIUM LTD. BANGALORE-560073 (INDIA)</p>	NAME	DATE
		DRAWN	J.P.KAUSHIK 08-06-2017
		CHECKED	
		APPROVED	B.NATARAJ 09-06-2017
<p>1. ALL DIMENSIONS ARE IN mm. 2. ROUND OFF ALL SHARP CORNERS WITH 0.40 mm. 3. TOLERANCES WILL BE AS PER IS:6477-1983, UNLESS OTHERWISE SPECIFIED</p>		SCALE	1:1
		AREA mm ²	1695.423
		PERIMETER mm.	846.602
		WEIGHT kg/m	4.578
PARTY'S NAME	GLOBAL SYNDICATE, BANGALORE	DRAWING No.	SECTION No.
PARTY'S DRAWING No.	AS PER DRAWING-SOB/LULU/SE103	P-16909-1	-
ALLOY & TEMPER	6063 T6	S5371	S5371-ISSUE-2
DESCRIPTION	CURTAIN WALL SECTION		