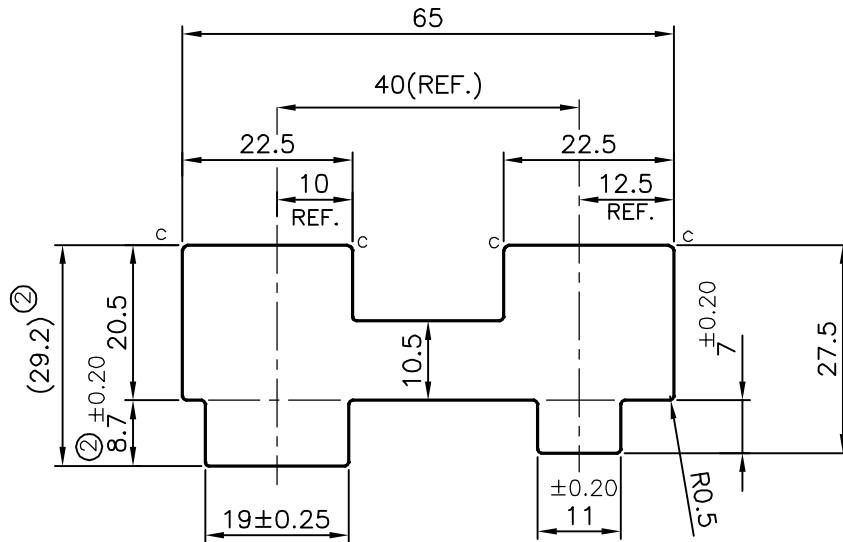


P-17009-1

S5389



ISSUE-2

DIMENSION CHANGED FROM 8.2 TO 8.7 & 28.7 TO 29.2 mm

WEIGHT ALSO CHANGED FROM 3.685 TO 3.710 kg/m

C = CHAMFER 0.5x45° (4 PLACES)

PLEASE SPECIFY THE EXPOSED SURFACE IN THE DRAWING WHEREVER BETTER FINISH REQUIRED.

TOLERANCES ON OVERALL WIDTHS & WIDTHS ACROSS FLATS OF BARS, & REGULAR SECTIONS

UPTO 6.40mm - ±0.20	UPTO 32.0mm - ±0.38	UPTO 120.0mm - ±0.85	UPTO 320.00mm - ±1.70
UPTO 10.0mm - ±0.23	UPTO 50.0mm - ±0.46	UPTO 160.0mm - ±1.02	
UPTO 12.0mm - ±0.25	UPTO 60.0mm - ±0.53	UPTO 200.0mm - ±1.14	
UPTO 16.0mm - ±0.28	UPTO 80.0mm - ±0.69	UPTO 250.0mm - ±1.40	
UPTO 25.0mm - ±0.30	UPTO 100.0mm - ±0.75	UPTO 300.0mm - ±1.65	



SYMBOL OF QUALITY
AN ISO 9001 COMPANY

JINDAL ALUMINIUM LTD.
BANGALORE-560073 (INDIA)

	NAME	DATE
DRAWN	J.P.KAUSHIK	23-09-2017
CHECKED		
APPROVED	B.NATARAJA	28-09-2017

- ALL DIMENSIONS ARE IN mm.
- ROUND OFF ALL SHARP CORNERS WITH 0.50 mm.
- TOLERANCES WILL BE AS PER IS:3965-1981 UNLESS OTHERWISE SPECIFIED

SCALE	1:1
AREA mm ²	1374.257
PERIMETER mm.	218.481
WEIGHT kg/m	3.710

PARTY'S NAME	GLOBAL AUTOTECH LTD., NOIDA	DRAWING No.	P-17009-1	SECTION No.	-
PARTY'S DRAWING No.	TC-EX-336 & AS PER REQUIREMENT		S5389		S5389(ISSUE-2)
ALLOY & TEMPER	65032 WP				
DESCRIPTION	MISC. SECTION				