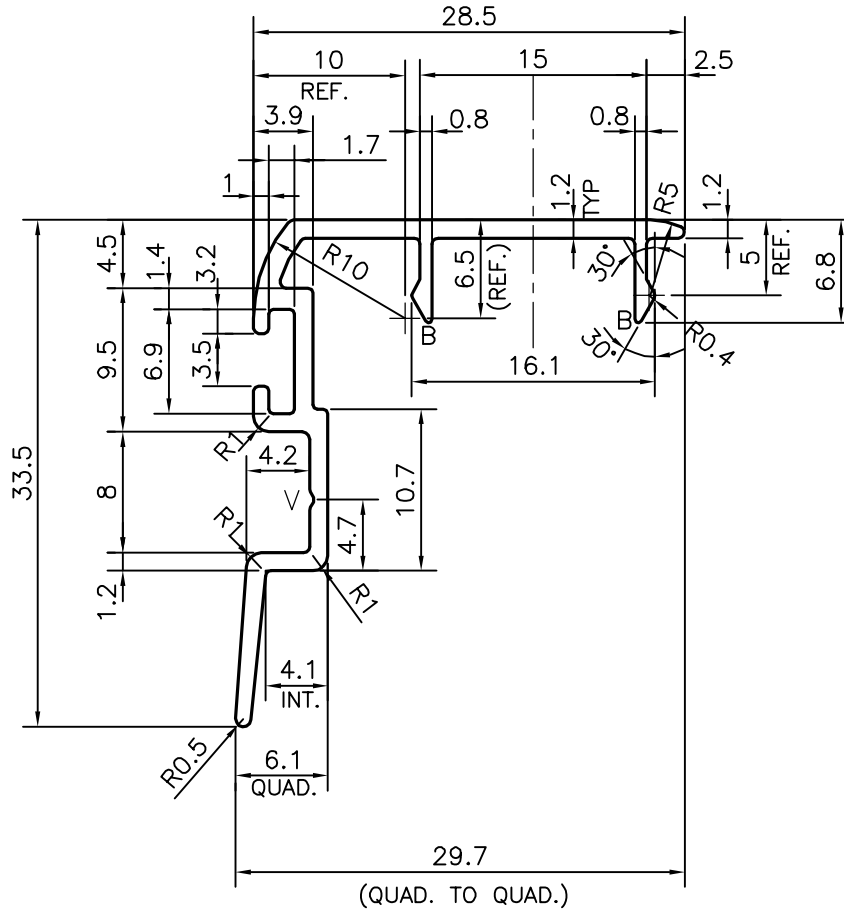
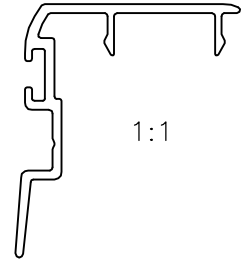
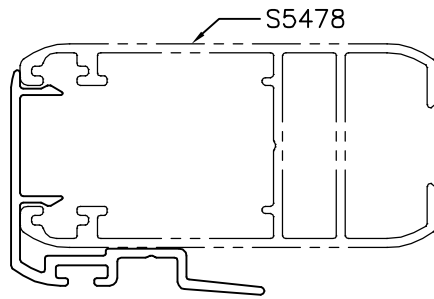


P-17282

S5479



B = BLEND RADIUS ( 2 PLACES )  
 v = V GROOVE 0.3x120°

TOLERANCES ON OVERALL WIDTHS & WIDTHS ACROSS FLATS OF BARS, & REGULAR SECTIONS

UPTO 6.40mm - ±0.20	UPTO 32.0mm - ±0.38	UPTO 120.0mm - ±0.85	1. STRAIGHTNESS=1.7mm/M 2. TWIST=1.7mm/M 3. ANGULARITY= ±2° 4. FLATNESS =0.007xWIDTH
UPTO 10.0mm - ±0.23	UPTO 50.0mm - ±0.46	UPTO 160.0mm - ±1.02	
UPTO 12.0mm - ±0.25	UPTO 60.0mm - ±0.53	UPTO 200.0mm - ±1.14	
UPTO 16.0mm - ±0.28	UPTO 80.0mm - ±0.69	UPTO 250.0mm - ±1.40	
UPTO 25.0mm - ±0.30	UPTO 100.0mm - ±0.75	UPTO 320.0mm - ±1.70	



SYMBOL OF QUALITY  
AN ISO 9001 COMPANY

**JINDAL ALUMINIUM LTD.**  
 BANGALORE-560073 (INDIA)

	NAME	DATE
DRAWN	J.P.KAUSHIK	22-06-2017
CHECKED		
APPROVED	B.NATARAJA	22-08-2017
SCALE		2:1
AREA mm <sup>2</sup>		96.868
PERIMETER mm.		164.714
WEIGHT kg/m		0.262
DRAWING No.	SECTION No.	
P-17282	-	
S5479	S5479	

1. ALL DIMENSIONS ARE IN mm.
2. ROUND OFF ALL SHARP CORNERS WITH 0.40 mm.
3. TOLERANCES WILL BE AS PER,IS:3965-1981 UNLESS OTHERWISE SPECIFIED

PARTY'S NAME	NCC LTD., LUCKNOW
PARTY'S DRAWING No.	NCC/MTLS/ALU/SAMAJWADI/D-03
ALLOY & TEMPER	6063 T6
DESCRIPTION	CLIP SECTION