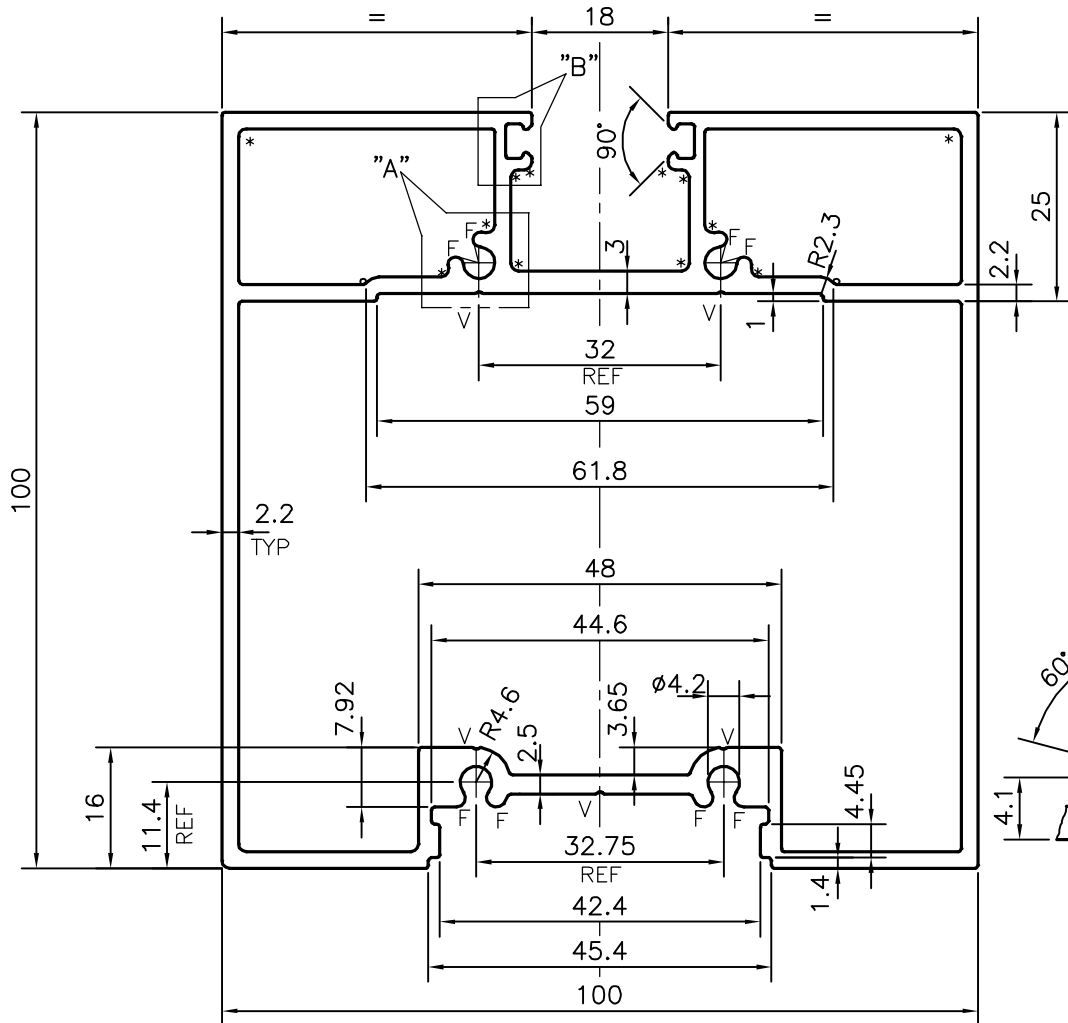
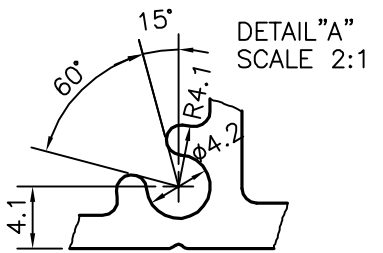
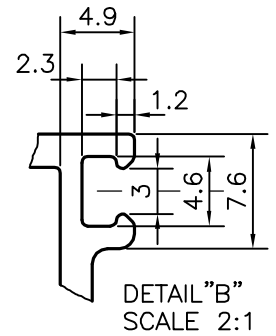


P-17630

S5620



F = FULL RADIUS(8 PLACES)  
 \* = 1.0 RADIUS(12 PLACES)  
 V = V GROOVE 0.3x90° (5 PLACES)

TOLERANCES ON OVERALL WIDTHS & WIDTHS ACROSS FLATS OF BARS, & REGULAR SECTIONS

|                     |                      |                      |                       |
|---------------------|----------------------|----------------------|-----------------------|
| UPTO 6.40mm - ±0.20 | UPTO 32.0mm - ±0.38  | UPTO 120.0mm - ±0.85 | UPTO 320.00mm - ±1.70 |
| UPTO 10.0mm - ±0.23 | UPTO 50.0mm - ±0.46  | UPTO 160.0mm - ±1.02 |                       |
| UPTO 12.0mm - ±0.25 | UPTO 60.0mm - ±0.53  | UPTO 200.0mm - ±1.14 |                       |
| UPTO 16.0mm - ±0.28 | UPTO 80.0mm - ±0.69  | UPTO 250.0mm - ±1.40 |                       |
| UPTO 25.0mm - ±0.30 | UPTO 100.0mm - ±0.75 | UPTO 300.0mm - ±1.65 |                       |



SYMBOL OF QUALITY  
AN ISO 9001 COMPANY

**JINDAL ALUMINIUM LTD.**  
 BANGALORE-560073 (INDIA)

|          | NAME        | DATE       |
|----------|-------------|------------|
| DRAWN    | J.P.KAUSHIK | 07-11-2017 |
| CHECKED  |             |            |
| APPROVED | B.NATARAJA  | 25-12-2017 |

- ALL DIMENSIONS ARE IN mm.
- ROUND OFF ALL SHARP CORNERS WITH 0.40 mm.
- TOLERANCES WILL BE AS PER,IS:6477-1983 UNLESS OTHERWISE SPECIFIED

|                      |             |
|----------------------|-------------|
| SCALE                | 1:1         |
| AREA mm <sup>2</sup> | 1295.503    |
| PERIMETER mm.        | 505.855     |
| WEIGHT kg/m          | 3.498       |
| DRAWING No.          | SECTION No. |
| P-17630              | -           |
| S5620                | S5620       |

|                     |                                 |
|---------------------|---------------------------------|
| PARTY'S NAME        | ALLARCH INDIA PVT. LTD., MUMBAI |
| PARTY'S DRAWING No. | AS PER DRAWING                  |
| ALLOY & TEMPER      | 6063 T6                         |
| DESCRIPTION         | MISC. SECTION                   |