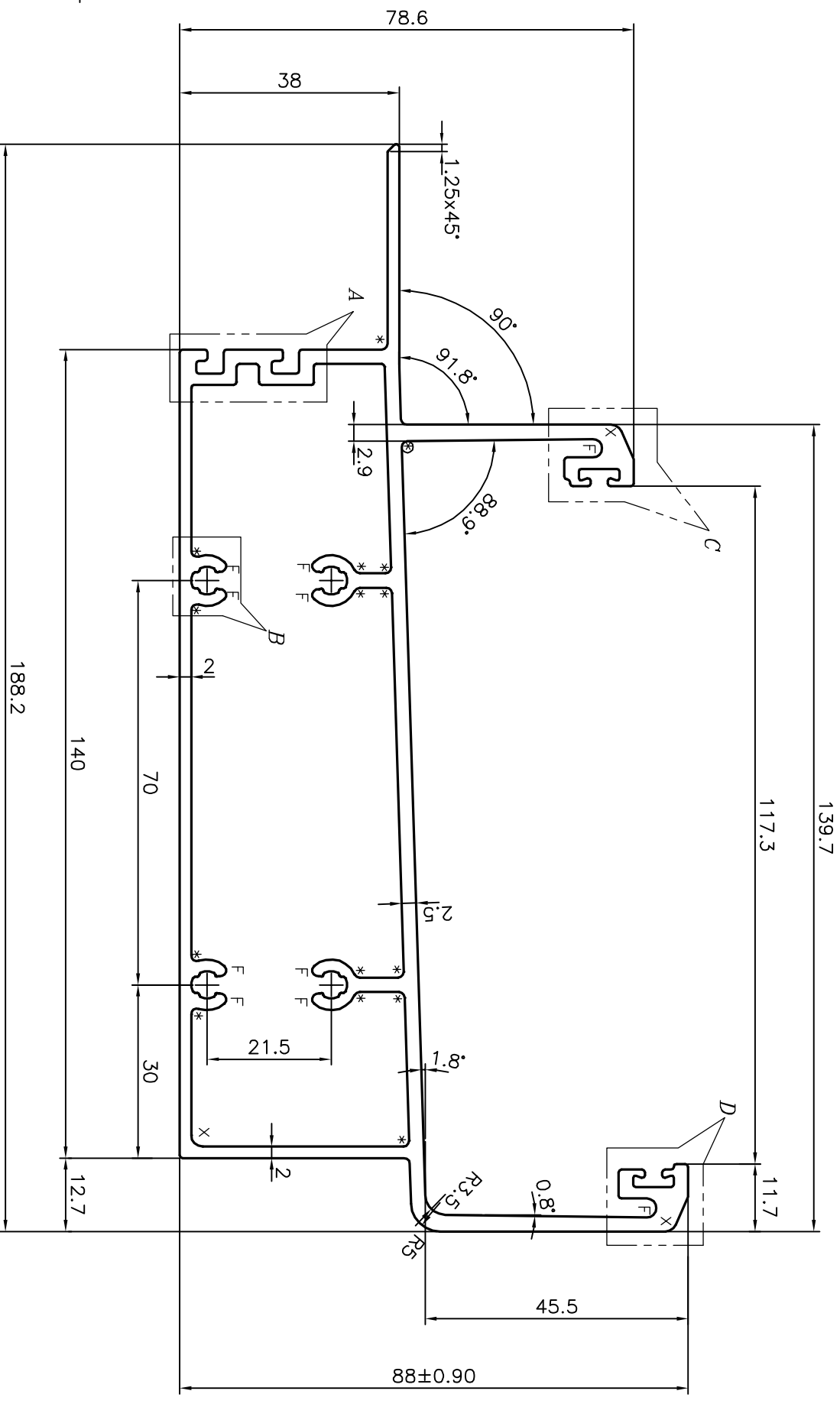
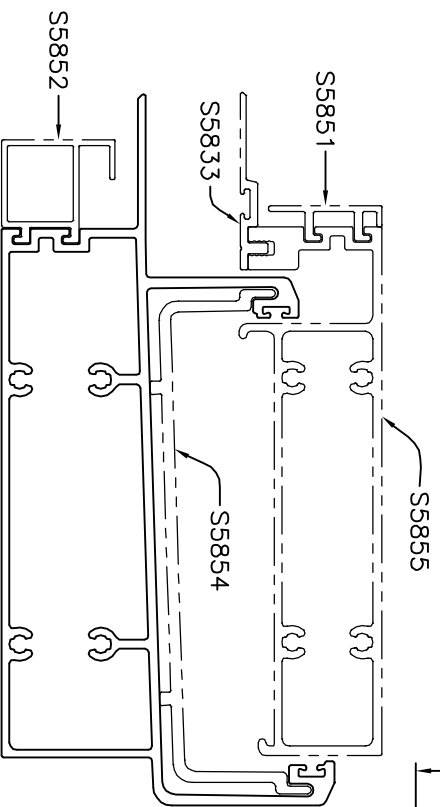
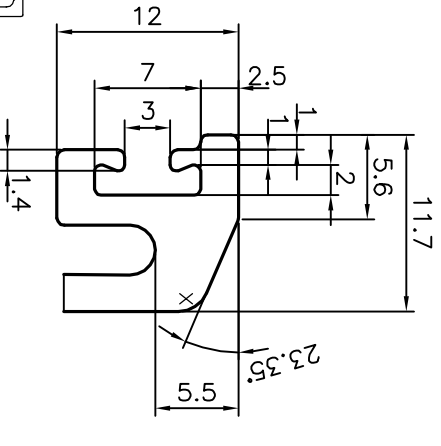
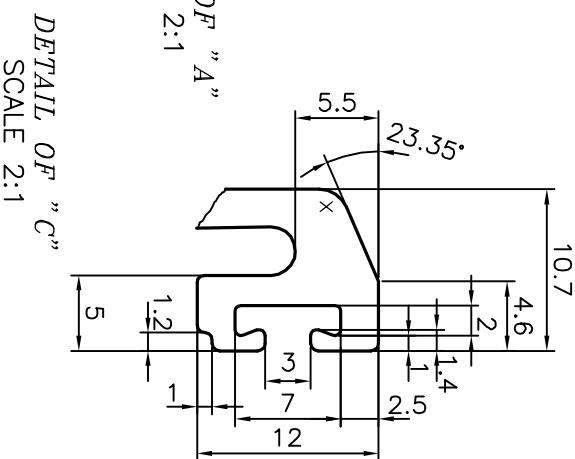
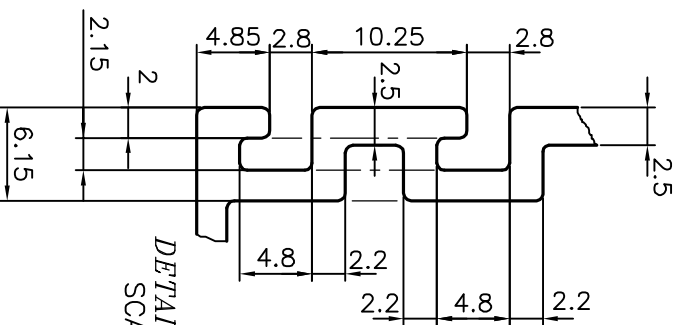
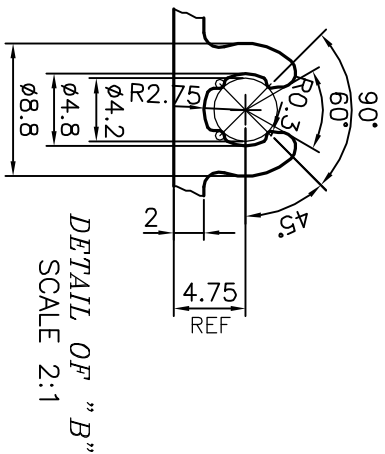


P-18213

S5853



F = FULL RADIUS (10 PLACES)
 X = RADIUS 2.0 mm. (3 PLACES)
 * = RADIUS 1 mm. (15 PLACES)

TOLERANCES ON OVERALL WIDTHS & WIDTHS ACROSS FLATS OF BARS, & REGULAR SECTIONS

UPTO 6.40mm - ±0.20	UPTO 32.0mm - ±0.38	UPTO 120.0mm - ±0.85
UPTO 10.0mm - ±0.23	UPTO 50.0mm - ±0.46	UPTO 160.0mm - ±1.02
UPTO 12.0mm - ±0.25	UPTO 60.0mm - ±0.53	UPTO 200.0mm - ±1.14
UPTO 16.0mm - ±0.28	UPTO 80.0mm - ±0.69	UPTO 250.0mm - ±1.40
UPTO 25.0mm - ±0.30	UPTO 100.0mm - ±0.75	UPTO 300.0mm - ±1.65

<p>SYMBOL OF QUALITY AN ISO 9001 COMPANY</p>		<p>JINDAL ALUMINIUM LTD. BANGALORE-560073 (INDIA)</p>	
<p>1. ALL DIMENSIONS ARE IN mm. 2. ROUND OFF ALL SHARP CORNERS WITH 0.40 mm. 3. TOLERANCES WILL BE AS PER IS:6477-1983, UNLESS OTHERWISE SPECIFIED</p>		<p>1. STRAIGHTNESS=1.7mm/M 2. TWIST=1.7mm/M 3. FLATNESS =0.003xWIDTH</p>	
<p>DRAWN <i>J.P. KAUSHIK</i></p>		<p>NAME <i>J.P. KAUSHIK</i></p>	
<p>CHECKED</p>		<p>DATE 15-05-2018</p>	
<p>APPROVED <i>B. NATARAJA</i></p>		<p>SCALE 1:1</p>	
<p>AREA mm² 1419.986</p>		<p>PERIMETER mm. 720.869</p>	
<p>WEIGHT kg/m 3.834</p>		<p>DRAWING No. P-18213</p>	
<p>SECTION No. S5853</p>		<p>SECTION No. S5853</p>	

PARTY'S NAME	GLASS WALL SYSTEMS INDIA PVT. LTD., MUMBAI
PARTY'S DRAWING No.	AS PER DRAWING-95161
ALLOY & TEMPER	6063 T6
DESCRIPTION	CURTAIN WALL SECTION