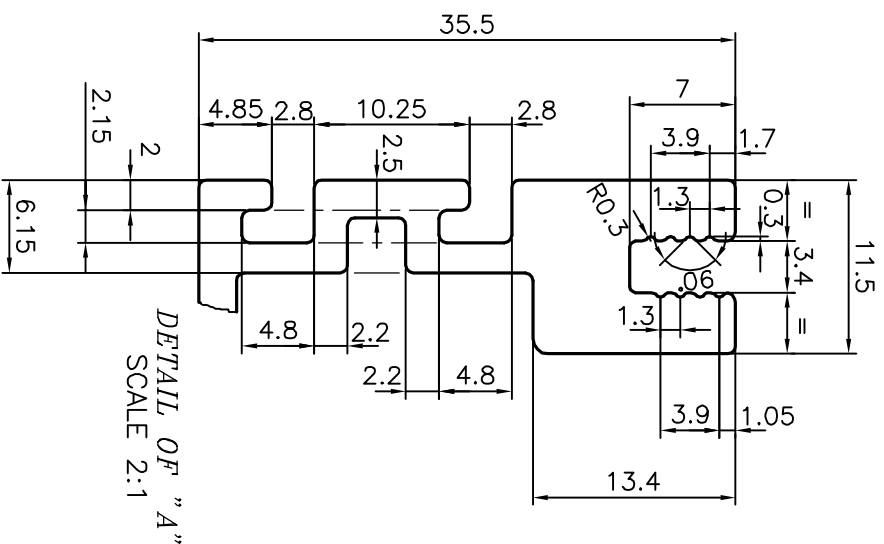
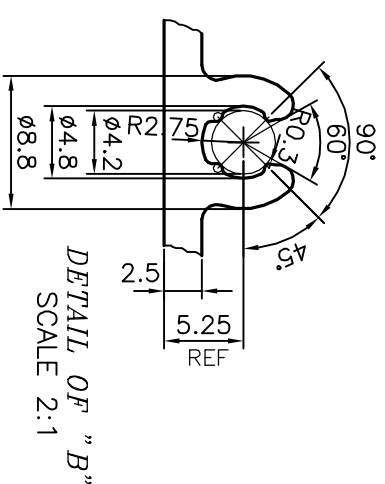
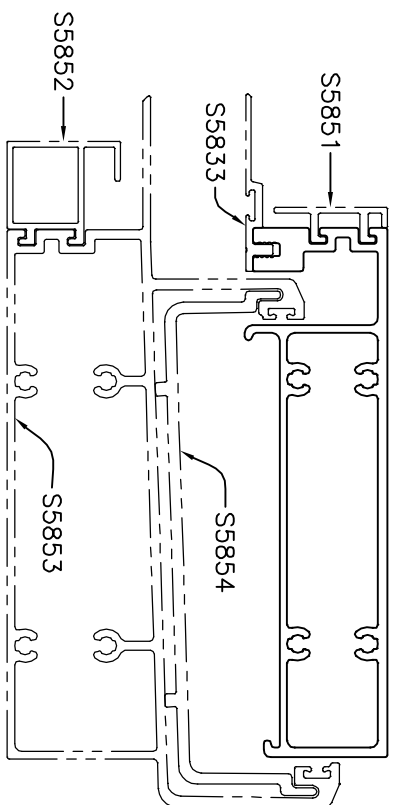


P-18215

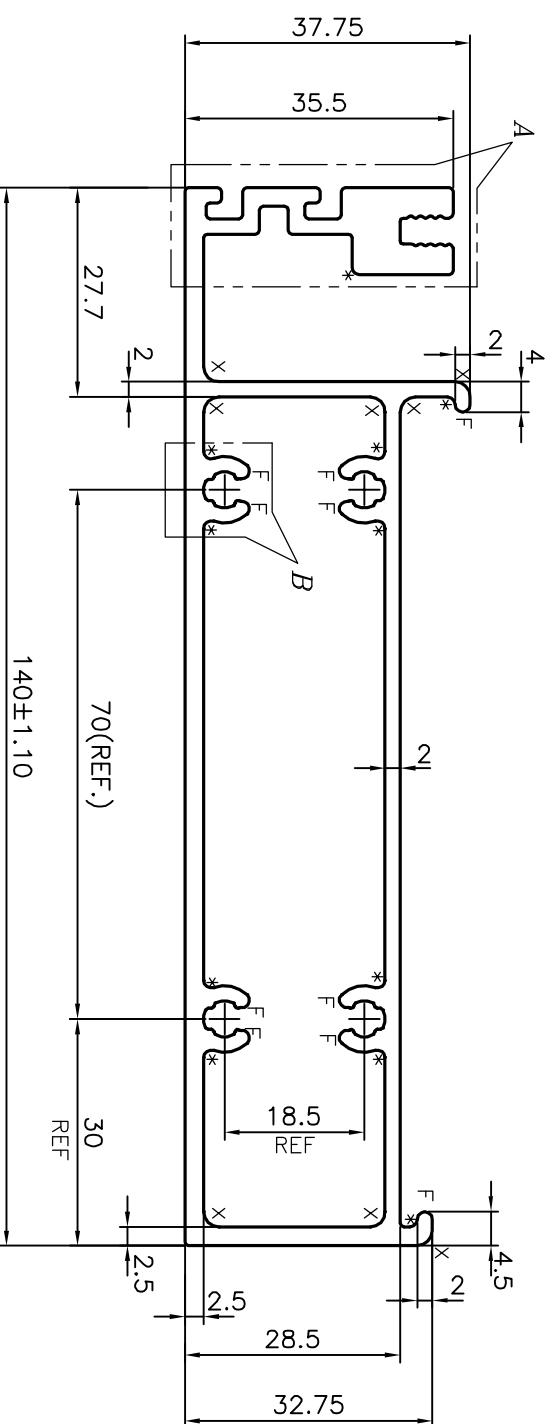
S5855



DETAIL OF "A"
SCALE 2:1



DETAIL OF "B"
SCALE 2:1



F = FULL RADIUS (10 PLACES)
 X = RADIUS 2.0 mm. (8 PLACES)
 * = RADIUS 1 mm. (11 PLACES)

TOLERANCES ON OVERALL WIDTHS & WIDTHS ACROSS FLATS OF BARS, & REGULAR SECTIONS

UPTO 6.40mm - ±0.20	UPTO 32.0mm - ±0.38	UPTO 120.0mm - ±0.85
UPTO 10.0mm - ±0.23	UPTO 50.0mm - ±0.46	UPTO 160.0mm - ±1.02
UPTO 12.0mm - ±0.25	UPTO 60.0mm - ±0.53	UPTO 200.0mm - ±1.14
UPTO 16.0mm - ±0.28	UPTO 80.0mm - ±0.69	UPTO 250.0mm - ±1.40
UPTO 25.0mm - ±0.30	UPTO 100.0mm - ±0.75	UPTO 300.0mm - ±1.65

1. STRAIGHTNESS=1.7mm/M
2. TWIST=1.7mm/M
3. FLATNESS =0.003xWIDTHH

JINDAL
 SYMBOL OF QUALITY
 AN ISO 9001 COMPANY

JINDAL ALUMINIUM LTD.
 BANGALORE-560073 (INDIA)

1. ALL DIMENSIONS ARE IN mm.
 2. ROUND OFF ALL SHARP CORNERS WITH 0.40 mm.
 3. TOLERANCES WILL BE AS PER IS:6477-1983, UNLESS OTHERWISE SPECIFIED

PARTY'S NAME	GLASS WALL SYSTEMS INDIA PVT. LTD., MUMBAI	DRAWN	J.P. KAVSHIK	DATE	15-05-2018
PARTY'S DRAWING No.	AS PER DRAWING-95162	CHECKED			
ALLOY & TEMPER	6063 T6	APPROVED	B. NATARAJA		28-05-2018
DESCRIPTION	CURTAIN WALL SECTION	SCALE	1:1		
		AREA mm ²	1040.237		
		PERIMETER mm.	484.014		
		WEIGHT kg/m	2.809		
		DRAWING No.	P-18215		
		SECTION No.	S5855		