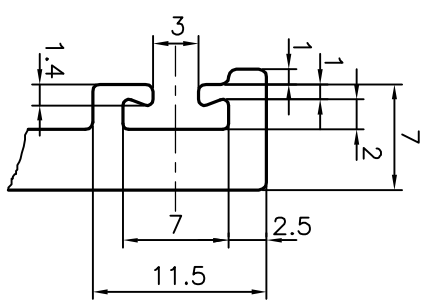
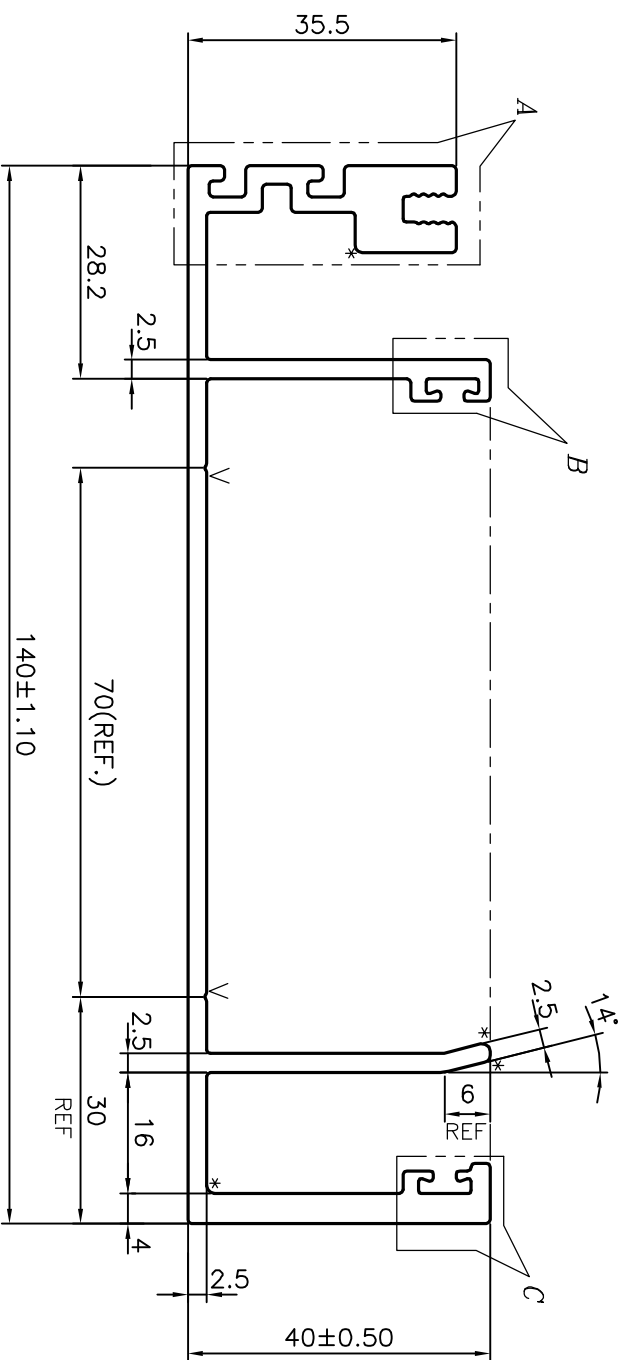
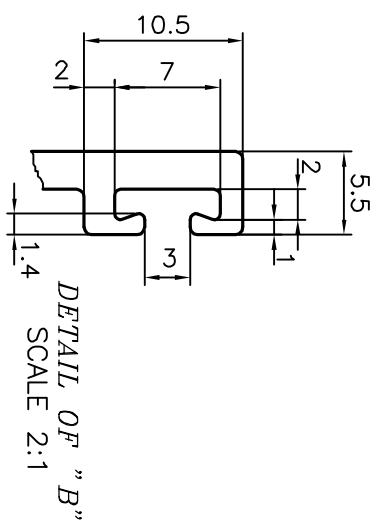
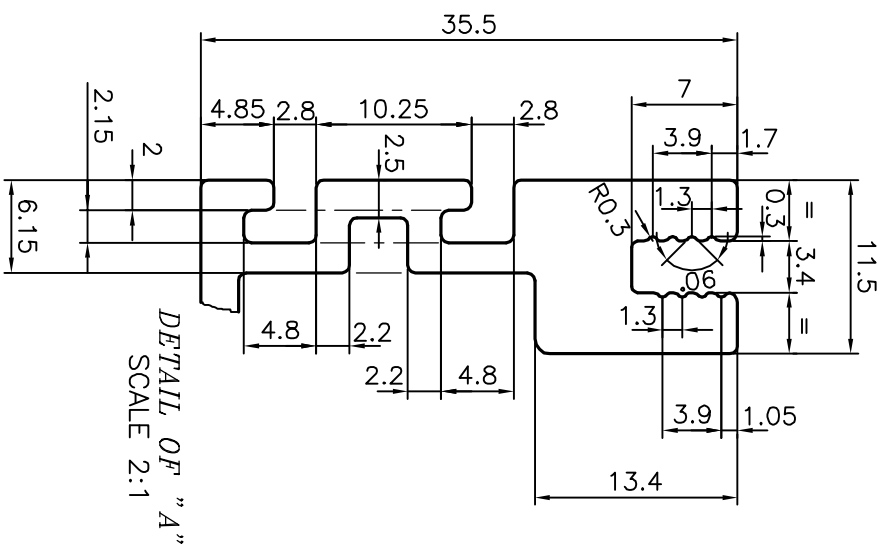
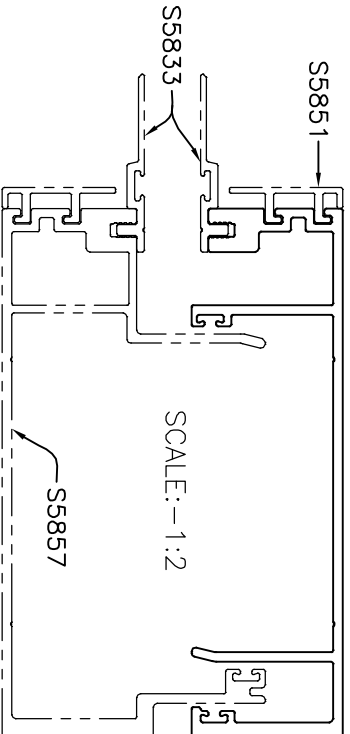


P-18216

S5856



* = RADIUS 1 mm. (2 PLACES)
V = VEE GROOVE 0.3x90° (2 PLACES)



TOLERANCES ON OVERALL WIDTHS & WIDTHS ACROSS FLATS OF BARS, & REGULAR SECTIONS

UPTO 6.40mm - ±0.20	UPTO 32.0mm - ±0.38	UPTO 120.0mm - ±0.85
UPTO 10.0mm - ±0.23	UPTO 50.0mm - ±0.46	UPTO 160.0mm - ±1.02
UPTO 12.0mm - ±0.25	UPTO 60.0mm - ±0.53	UPTO 200.0mm - ±1.14
UPTO 16.0mm - ±0.28	UPTO 80.0mm - ±0.69	UPTO 250.0mm - ±1.40
UPTO 25.0mm - ±0.30	UPTO 100.0mm - ±0.75	UPTO 300.0mm - ±1.65

1. STRAIGHTNESS=1.7mm/M
2. TWIST=1.7mm/M
3. FLATNESS =0.003xWIDTHH

JINDAL
SYMBOL OF QUALITY
AN ISO 9001 COMPANY

JINDAL ALUMINIUM LTD.
BANGALORE-560073 (INDIA)

1. ALL DIMENSIONS ARE IN mm.
2. ROUND OFF ALL SHARP CORNERS WITH 0.40 mm.
3. TOLERANCES WILL BE AS PER IS:3965-1981, UNLESS OTHERWISE SPECIFIED

PARTY'S NAME	GLASS WALL SYSTEMS INDIA PVT. LTD., MUMBAI	DRAWN	J.P. KAVSHIK	DATE	15-05-2018
PARTY'S DRAWING No.	AS PER DRAWING-95158	CHECKED			
ALLOY & TEMPER	6063 T6	APPROVED	B. NATARAJA		28-05-2018
DESCRIPTION	CURTAIN WALL SECTION	SCALE	1:1		
		AREA mm ²	926.557		
		PERIMETER mm.	665.459		
		WEIGHT kg/m	2.502		
		DRAWING No.	P-18216		
		SECTION No.	S5856		