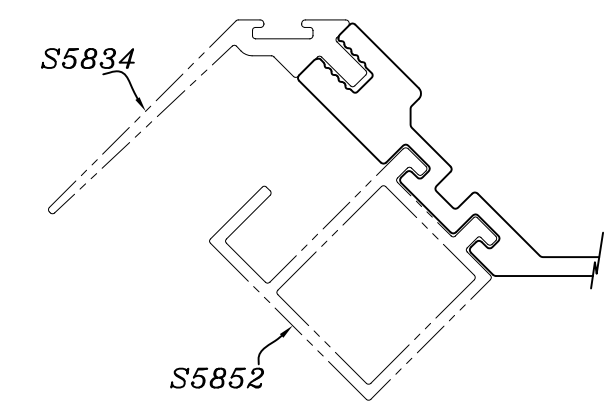
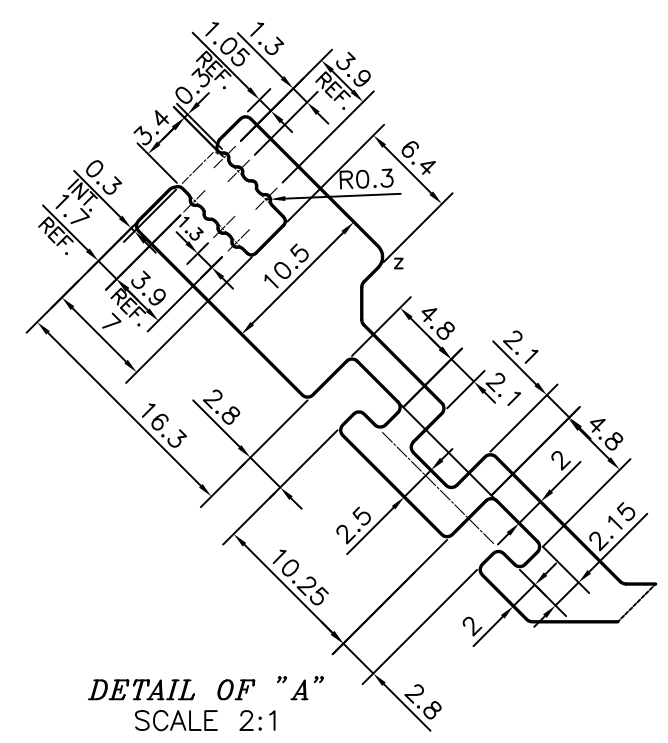
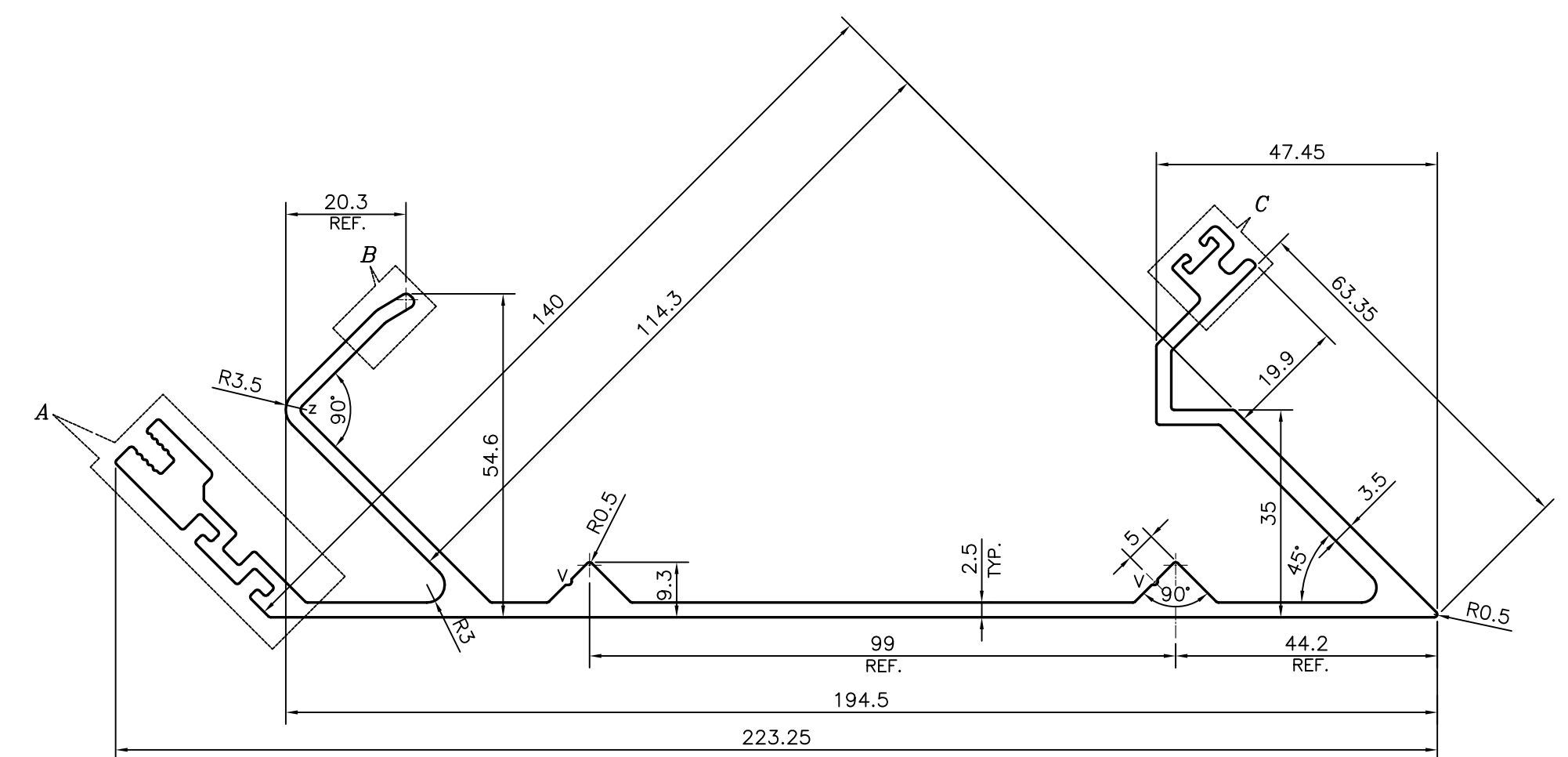
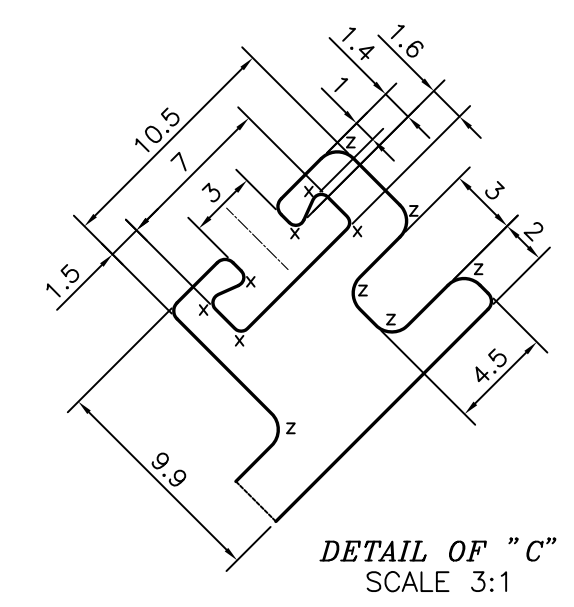
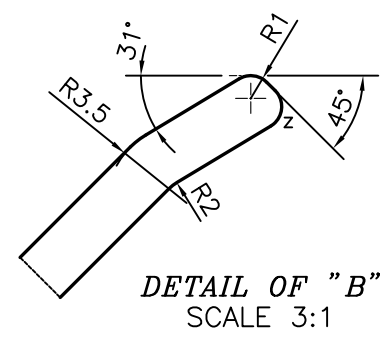


P-18220  
S5860



V = VEE GROOVE 0.5x90° (2 PLACES)  
X = RADIUS 0.4 mm. (6 PLACES)  
Z = RADIUS 1 mm. (9 PLACES)

TOLERANCES ON OVERALL WIDTHS & WIDTHS ACROSS FLATS OF BARS, & REGULAR SECTIONS			
UPTO 6.40mm - ±0.20	UPTO 32.0mm - ±0.38	UPTO 120.0mm - ±0.85	UPTO 320.00mm - ±1.70
UPTO 10.0mm - ±0.23	UPTO 50.0mm - ±0.46	UPTO 160.0mm - ±1.02	
UPTO 12.0mm - ±0.25	UPTO 60.0mm - ±0.53	UPTO 200.0mm - ±1.14	
UPTO 16.0mm - ±0.28	UPTO 80.0mm - ±0.69	UPTO 250.0mm - ±1.40	
UPTO 25.0mm - ±0.30	UPTO 100.0mm - ±0.75	UPTO 300.0mm - ±1.65	

<p>SYMBOL OF QUALITY AN ISO 9001 COMPANY</p>	<p><b>JINDAL ALUMINIUM LTD.</b> BANGALORE-560073 (INDIA)</p>	NAME	DATE
		DRAWN	PARVESH 15-05-2018
<p>1. ALL DIMENSIONS ARE IN mm. 2. ROUND OFF ALL SHARP CORNERS WITH 0.40 mm. 3. TOLERANCES WILL BE AS PER IS:3965-1981, UNLESS OTHERWISE SPECIFIED</p>		CHECKED	
		APPROVED	B.NATARAJA 28-05-2018
<p>PARTY'S NAME: GLASSWALL SYSTEMS INDIA PVT. LTD., MUMBAI</p>		SCALE	1:1
		AREA mm <sup>2</sup>	1317.313
<p>PARTY'S DRAWING No.: 95169</p>		PERIMETER mm.	871.712
		WEIGHT kg/m	3.557
<p>ALLOY &amp; TEMPER: 6063 T6</p>		DRAWING No.	SECTION No.
		P-18220	-
<p>DESCRIPTION: CURTAIN WALL SECTION</p>		S5860	S5860