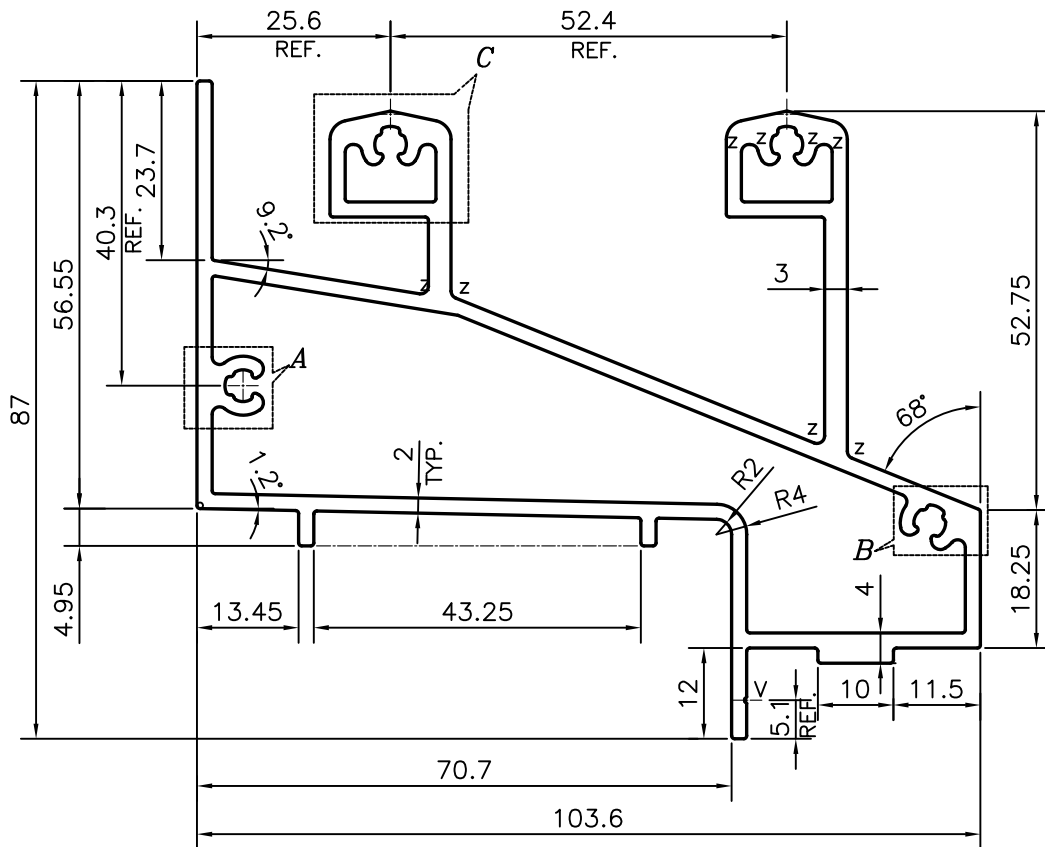
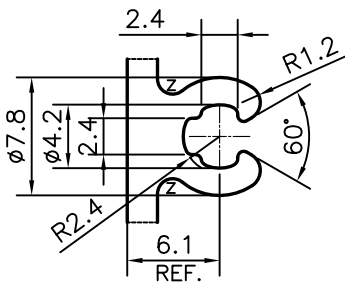


P-18224-1

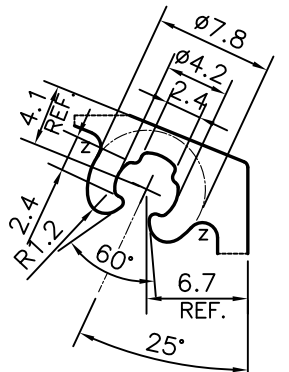
S5863



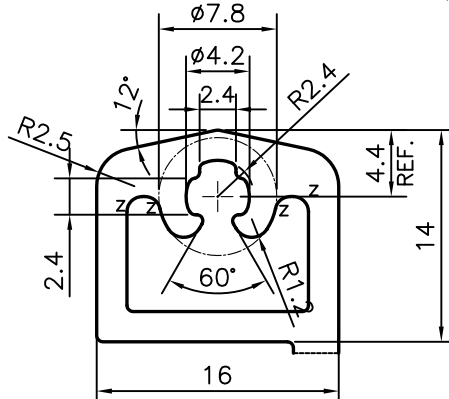
Z = RADIUS 1 mm (20 PLACES)  
 V = VEE GROOVE 0.3x90° (1 PLACE)



DETAIL OF "A"  
SCALE 2:1



DETAIL OF "B"  
SCALE 2:1



DETAIL OF "C"  
SCALE 2:1

TOLERANCES ON OVERALL WIDTHS & WIDTHS ACROSS FLATS OF BARS, & REGULAR SECTIONS

UPTO 6.40mm - ±0.20	UPTO 32.0mm - ±0.38	UPTO 120.0mm - ±0.85
UPTO 10.0mm - ±0.23	UPTO 50.0mm - ±0.46	UPTO 160.0mm - ±1.02
UPTO 12.0mm - ±0.25	UPTO 60.0mm - ±0.53	UPTO 200.0mm - ±1.14
UPTO 16.0mm - ±0.28	UPTO 80.0mm - ±0.69	UPTO 250.0mm - ±1.40
UPTO 25.0mm - ±0.30	UPTO 100.0mm - ±0.75	UPTO 300.0mm - ±1.65



SYMBOL OF QUALITY  
AN ISO 9001 COMPANY

**JINDAL ALUMINIUM LTD.**  
 BANGALORE-560073 (INDIA)

	NAME	DATE
DRAWN	PARVESH	17-05-2018
CHECKED		
APPROVED	B.NATARAJA	28-05-2018

- ALL DIMENSIONS ARE IN mm.
- ROUND OFF ALL SHARP CORNERS WITH 0.4 mm.
- TOLERANCES WILL BE AS PER IS:6477-1983, UNLESS OTHERWISE SPECIFIED

SCALE	1:1
AREA mm <sup>2</sup>	1074.663
PERIMETER mm.	548.602
WEIGHT kg/m	2.902

PARTY'S NAME	GLASSWALL SYSTEMS INDIA PVT. LTD., MUMBAI
PARTY'S DRAWING No.	95171
ALLOY & TEMPER	6063 T6
DESCRIPTION	CURTAIN WALL SECTION

DRAWING No.	SECTION No.
P-18224-1	-
S5863	S5863