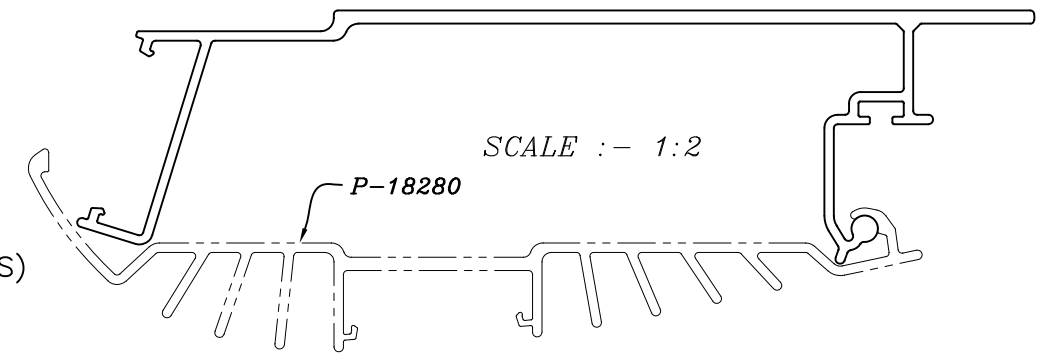
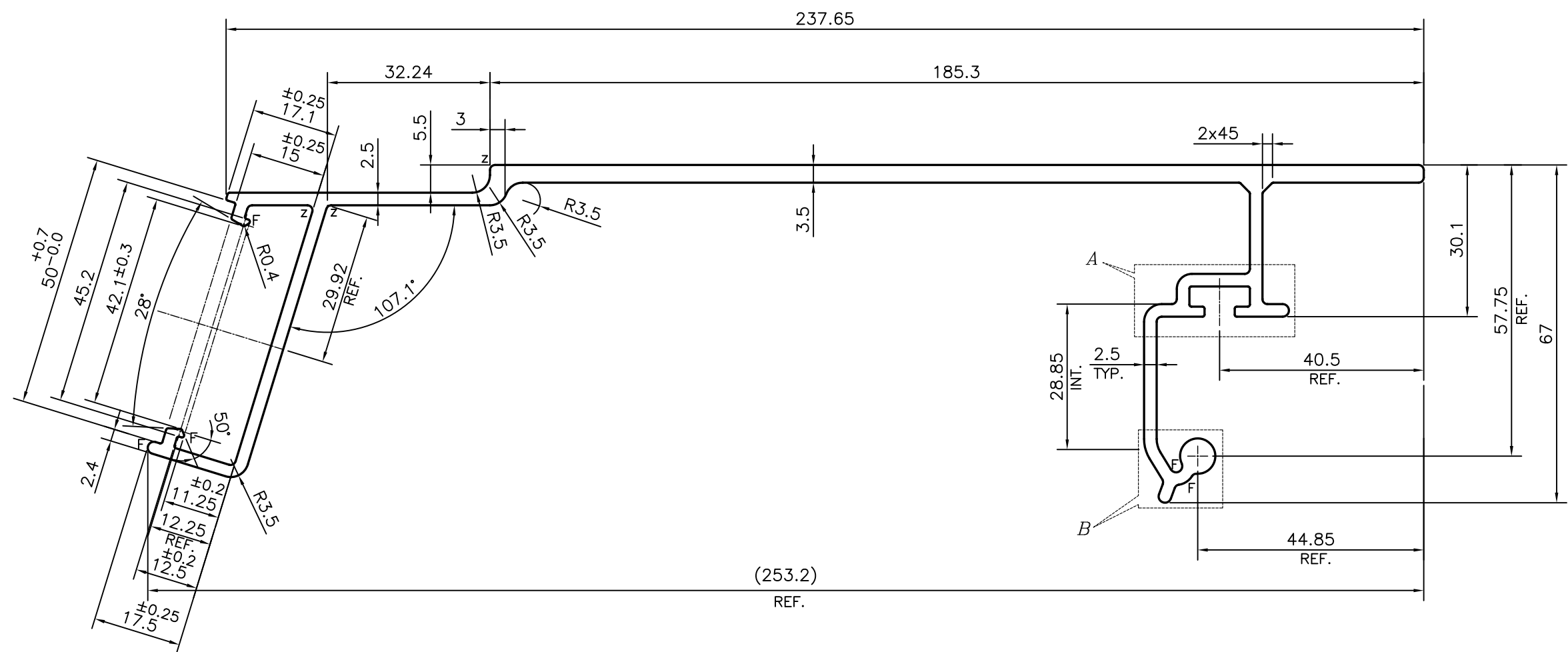
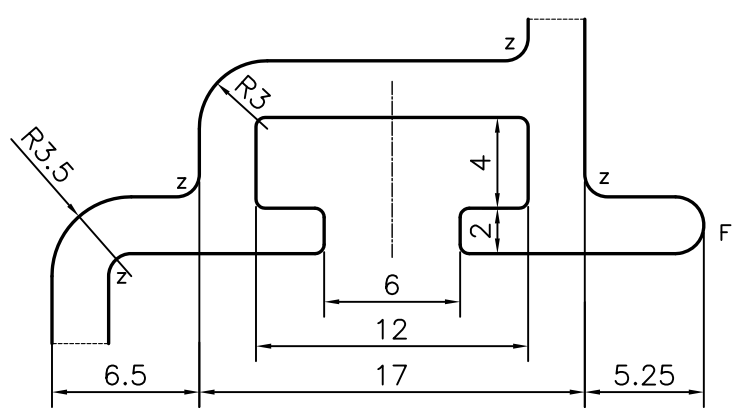


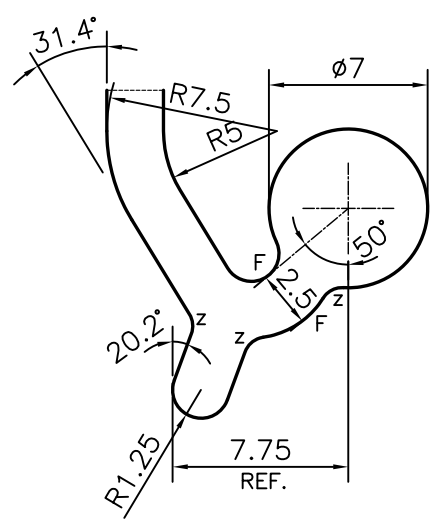
P-18279-2  
S5889



F = FULL RADIUS (6 PLACES)  
Z = RADIUS 1 mm. (11 PLACES)



DETAIL OF "A"  
SCALE 3:1



DETAIL OF "B"  
SCALE 3:1

| TOLERANCES ON OVERALL WIDTHS & WIDTHS ACROSS FLATS OF BARS, & REGULAR SECTIONS |                      |                      |                       |
|--|----------------------|----------------------|-----------------------|
| UPTO 6.40mm - ±0.20  | UPTO 32.0mm - ±0.38  | UPTO 120.0mm - ±0.85 | UPTO 320.00mm - ±1.70 |
| UPTO 10.0mm - ±0.23  | UPTO 50.0mm - ±0.46  | UPTO 160.0mm - ±1.02 |                       |
| UPTO 12.0mm - ±0.25  | UPTO 60.0mm - ±0.53  | UPTO 200.0mm - ±1.14 |                       |
| UPTO 16.0mm - ±0.28  | UPTO 80.0mm - ±0.69  | UPTO 250.0mm - ±1.40 |                       |
| UPTO 25.0mm - ±0.30  | UPTO 100.0mm - ±0.75 | UPTO 300.0mm - ±1.65 |                       |

|  |  |                      |             |
|--|--|----------------------|-------------|
| <p>SYMBOL OF QUALITY<br/>AN ISO 9001 COMPANY</p>   | <p><b>JINDAL ALUMINIUM LTD.</b><br/>BANGALORE-560073 (INDIA)</p> | NAME                 | DATE        |
|  |  | DRAWN                | PARVESH     |
| <p>1. ALL DIMENSIONS ARE IN mm.<br/>2. ROUND OFF ALL SHARP CORNERS WITH 0.40 mm.<br/>3. TOLERANCES WILL BE AS PER IS:3965-1981, UNLESS OTHERWISE SPECIFIED</p> |  | CHECKED              |             |
|  |  | APPROVED             | B.NATARAJA  |
| <p>PARTY'S NAME: BFG INTERNATIONAL PVT. LTD., CHITTOOR</p>   |  | SCALE                | 1:1         |
|  |  | AREA mm <sup>2</sup> | 1297.126    |
| <p>PARTY'S DRAWING No.: AS PER AUTOCAD DRAWING</p>   |  | PERIMETER mm.        | 865.063     |
|  |  | WEIGHT kg/m          | 3.502       |
| <p>ALLOY &amp; TEMPER: 6063 T6</p>   |  | DRAWING No.          | SECTION No. |
|  |  | P-18279-2            | -           |
| <p>DESCRIPTION: RAIL COACH SECTION</p>   |  | S5889                | S5889       |
|  |  |                      |             |