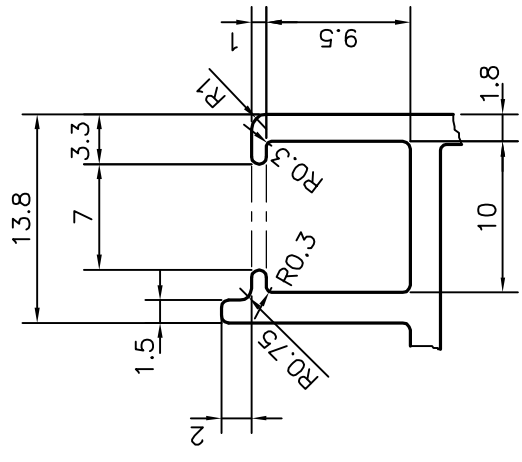
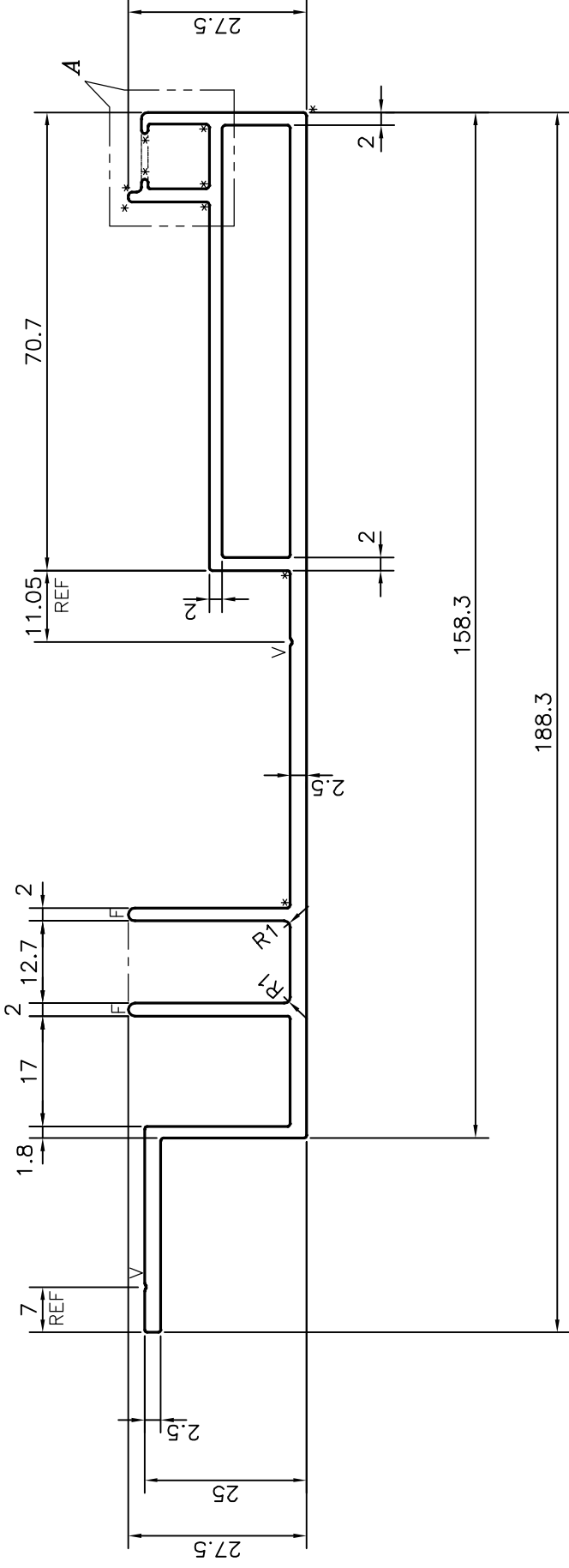


P-18537-1

S5969



DETAIL OF "A"  
SCALE 2:1



- \* = 0.50 RADIUS (10 PLACES)
- F = FULL RADIUS (2 PLACES)
- V = V GROOVE 0.3x90° (2 PLACES)

TOLERANCES ON OVERALL DIMENSIONS OF HOLLOW SECTIONS

UPTO 20.0mm - ±0.30	UPTO 80.0mm - ±0.70	UPTO 180.0mm - ±1.27	1. STRAIGHTNESS=1.7mm/M
UPTO 30.0mm - ±0.38	UPTO 100.0mm - ±0.80	UPTO 200.0mm - ±1.40	2. TWIST=1.7mm/M
UPTO 40.0mm - ±0.45	UPTO 120.0mm - ±0.90	UPTO 225.0mm - ±1.52	3. ANGULARITY= ±2°
UPTO 50.0mm - ±0.52	UPTO 140.0mm - ±1.00		4. FLATNESS =0.006xWIDTH
UPTO 60.0mm - ±0.60	UPTO 160.0mm - ±1.14		

<p>SYMBOL OF QUALITY AN ISO 9001 COMPANY</p>	<p><b>JINDAL ALUMINIUM LTD.</b> BANGALORE-560073 (INDIA)</p>		<p>NAME J.P.KAUSHIK</p>	<p>DATE 16-08-2018</p>
	<p>1. ALL DIMENSIONS ARE IN mm. 2. ROUND OFF ALL SHARP CORNERS WITH 0.40 mm. 3. TOLERANCES WILL BE AS PER IS:6477-1983 UNLESS OTHERWISE SPECIFIED</p>		<p>DRAWN CHECKED</p>	<p>APPROVED B.NATARAJA</p>
<p>PARTY'S NAME PANCHSHIL REALTY &amp; DEVELOPERS PVT. LTD., PUNE</p>		<p>SCALE 1:1</p>	<p>AREA mm<sup>2</sup> 839.692</p>	<p>PERIMETER mm. 596.444</p>
<p>PARTY'S DRAWING No. AS PER DRAWING</p>		<p>WEIGHT kg/m 2.267</p>	<p>DRAWING No. SECTION No.</p>	<p>DRAWING No. SECTION No.</p>
<p>ALLOY &amp; TEMPER 6063 T6</p>		<p>P-18537-1</p>	<p>S5969</p>	<p>S5969</p>
<p>DESCRIPTION CURTAIN WALL SECTION</p>				