

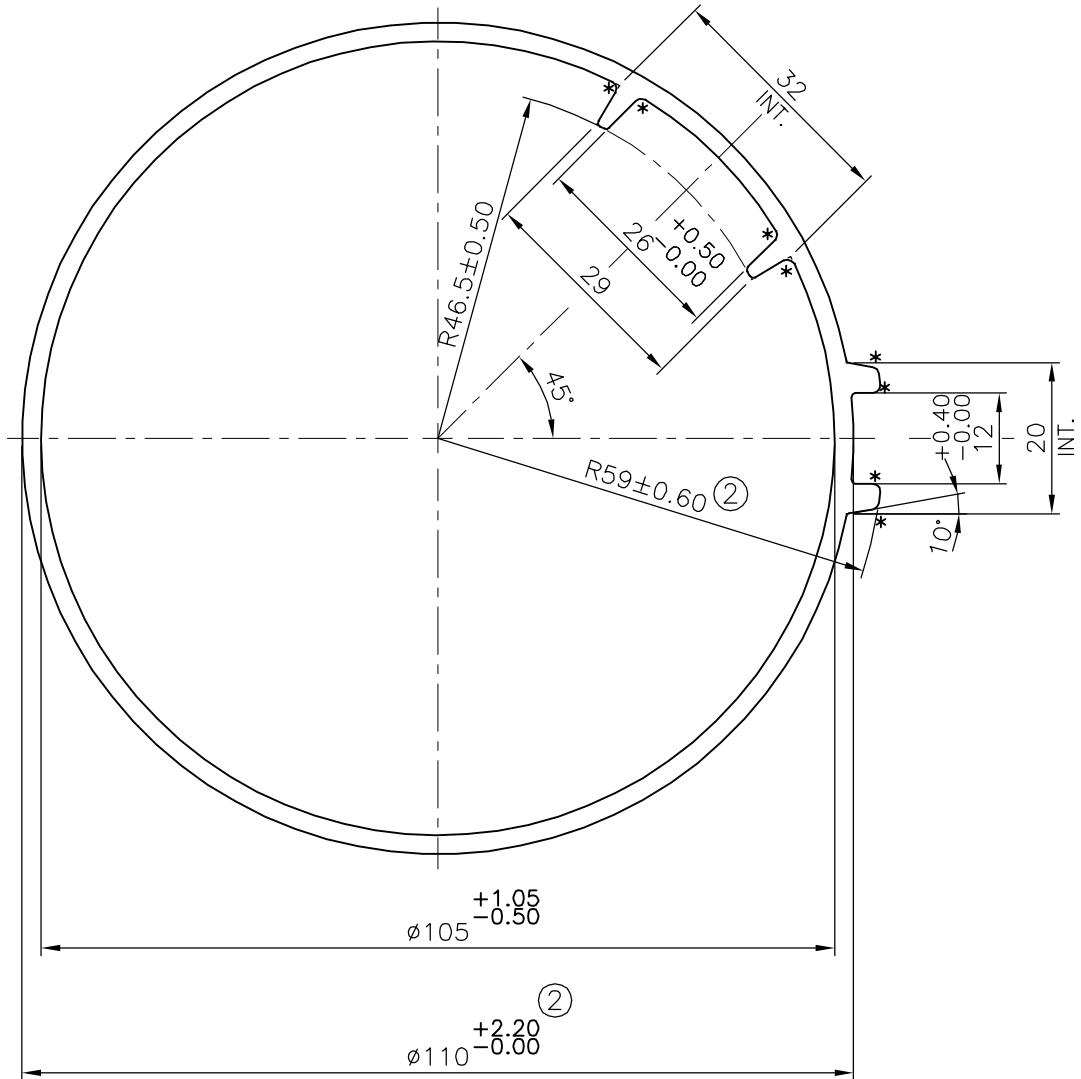
P-17115-2

S6007

ISSUE-2

TOLERANCE CHANGED ON DIMENSION FROM $\phi 110 \pm 1.10$ TO $\phi 110$
 DIMENSION CHANGED FROM R58.5 mm TO R59 mm
 WEIGHT CHANGED FROM 2.426 TO 2.435 kg/m

+2.20
-0.00



UNSPECIFIED RADIUS 0.5 mm
 * = 1.0 RADIUS(8 PLACES)

TOLERANCES ON OVERALL WIDTHS & WIDTHS ACROSS FLATS OF BARS, & REGULAR SECTIONS

UPTO 6.40mm - ± 0.20	UPTO 32.0mm - ± 0.38	UPTO 120.0mm - ± 0.85	UPTO 320.00mm - ± 1.70
UPTO 10.0mm - ± 0.23	UPTO 50.0mm - ± 0.46	UPTO 160.0mm - ± 1.02	
UPTO 12.0mm - ± 0.25	UPTO 60.0mm - ± 0.53	UPTO 200.0mm - ± 1.14	
UPTO 16.0mm - ± 0.28	UPTO 80.0mm - ± 0.69	UPTO 250.0mm - ± 1.40	
UPTO 25.0mm - ± 0.30	UPTO 100.0mm - ± 0.75	UPTO 300.0mm - ± 1.65	



SYMBOL OF QUALITY
AN ISO 9001 COMPANY

JINDAL ALUMINIUM LTD.
 BANGALORE-560073 (INDIA)

	NAME	DATE
DRAWN	J.P.KAUSHIK	02-11-2018
CHECKED		
APPROVED	B.NATARAJA	02-11-2018

- ALL DIMENSIONS ARE IN mm.
- ROUND OFF ALL SHARP CORNERS WITH 0.40 mm.
- TOLERANCES WILL BE AS PER IS:6477-1983 UNLESS OTHERWISE SPECIFIED

SCALE	1:1
AREA mm ²	901.798
PERIMETER mm.	358.405
WEIGHT kg/m	2.435
DRAWING No.	SECTION No.
P-17115-2	-
S6007	S6007(ISSUE-2)

PARTY'S NAME	SHREE VAAREE ENGINEERS, CHENNAI
PARTY'S DRAWING No.	B-TPMZ-244-015-3
ALLOY & TEMPER	6005 T6
DESCRIPTION	OUTER TUBE BLANK