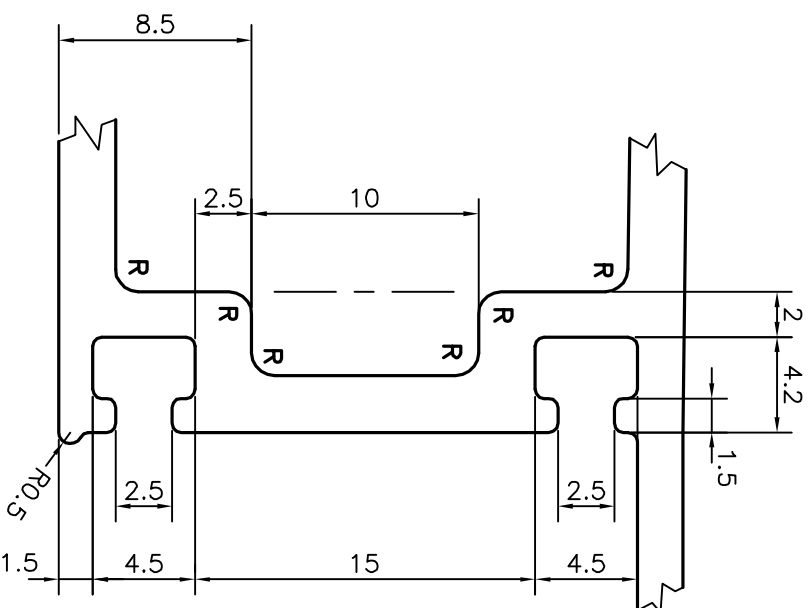
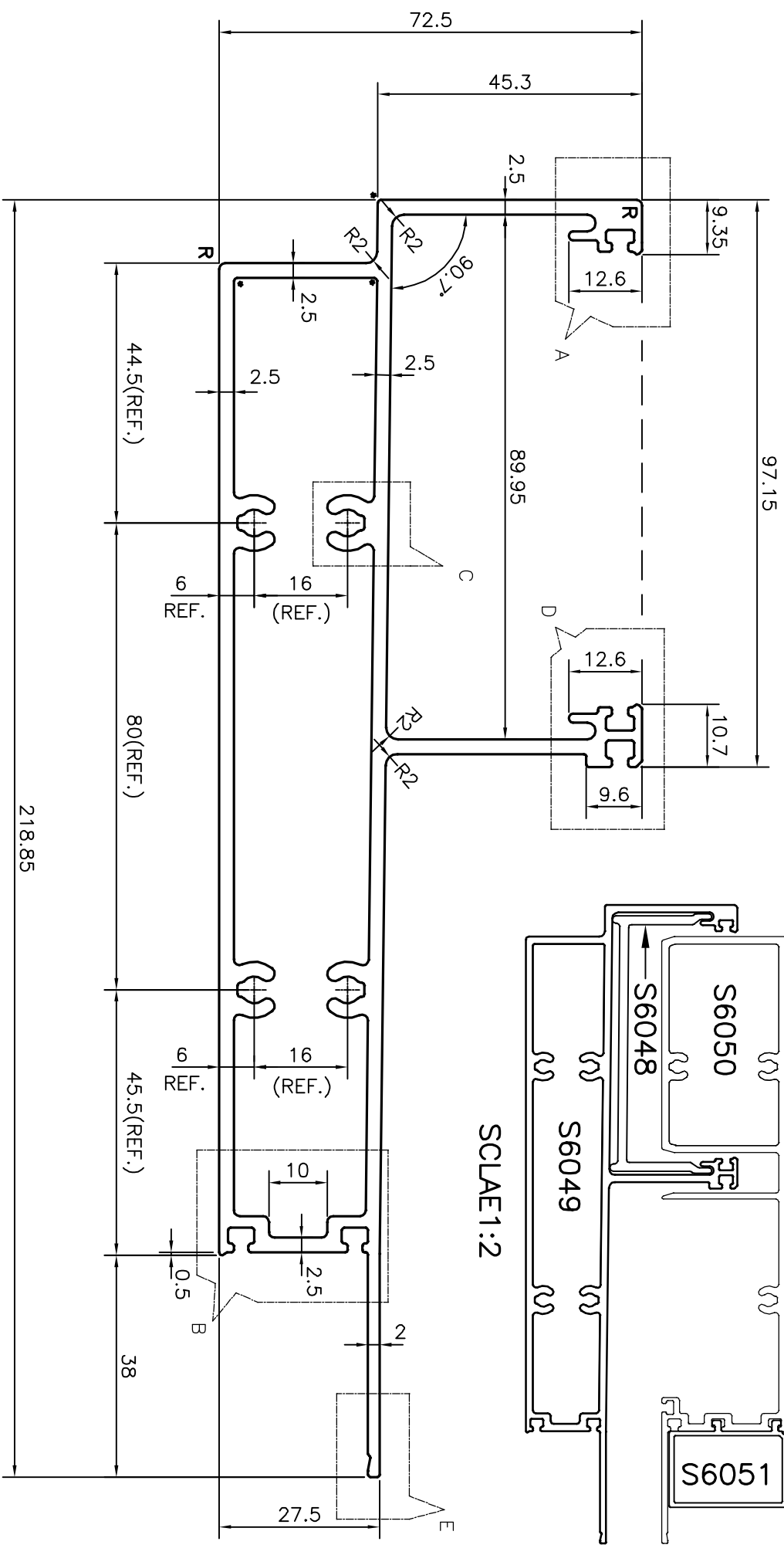
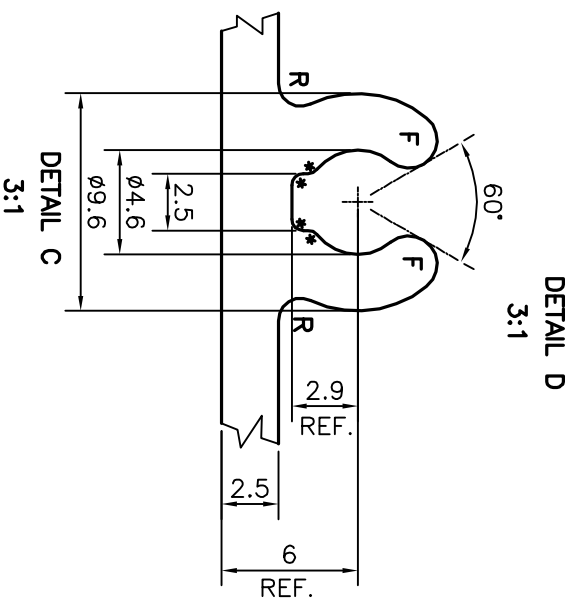
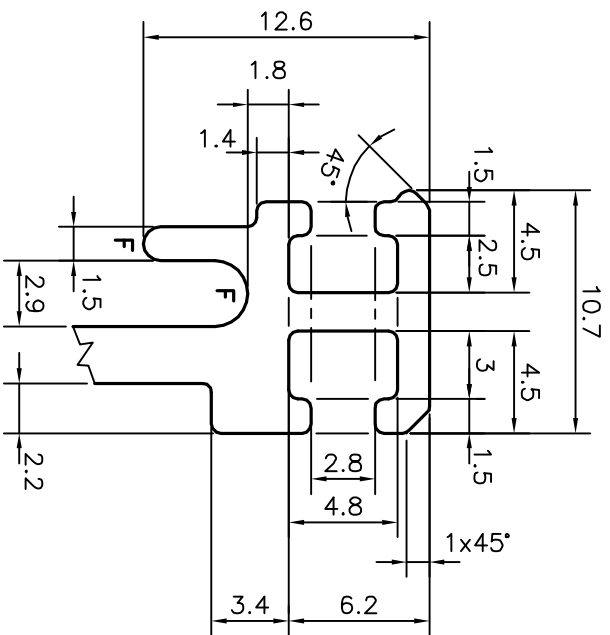
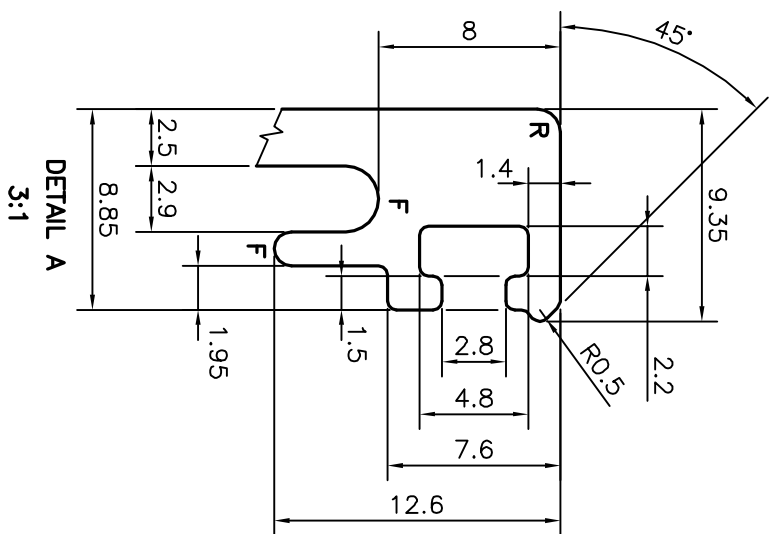
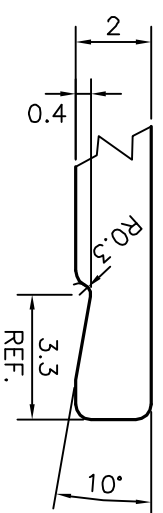



P-18883

S6049



F = FULL RADIUS (11 PLACES)  
 R = R1 mm (16 PLACES)  
 \* = R0.5 mm (19 PLACES)



 <p>SYMBOL OF QUALITY AN ISO 9001 COMPANY</p>		<p><b>JINDAL ALUMINIUM LTD.</b> BANGALORE-560073 (INDIA)</p>		<p>DRAWN</p>	<p>NAME</p>	<p>DATE</p>		
				<p>CHECKED</p>	<p>DARPAN</p>	<p>20-11-2018</p>		
<p>1. ALL DIMENSIONS ARE IN mm.                  2. ROUND OFF ALL SHARP CORNERS WITH 0.40 mm.                  3. TOLERANCES WILL BE AS PER IS:6477-1983, UNLESS OTHERWISE SPECIFIED</p>		<p>SCALE</p>	<p>1:1</p>		<p>APPROVED</p>	<p>B.NATARAJA</p>	<p>01-12-2018</p>	
		<p>AREA</p>	<p>mm<sup>2</sup></p>	<p>1547.13</p>	<p>PERIMETER</p>	<p>mm.</p>	<p>759.887</p>	<p>WEIGHT</p>
<p>PARTY'S NAME</p>	<p>GLOBAL SYNDICATE, BANGALORE</p>		<p>DRAWING No.</p>	<p>SECTION No.</p>		<p>P-18883</p>	<p>S6049</p>	
<p>PARTY'S DRAWING No.</p>	<p>AS PER DRAWING</p>		<p>ALLOY &amp; TEMPER</p>	<p>6063 T6</p>		<p>DESCRIPTION</p>	<p>HEAD TRANSOM SECTION</p>	