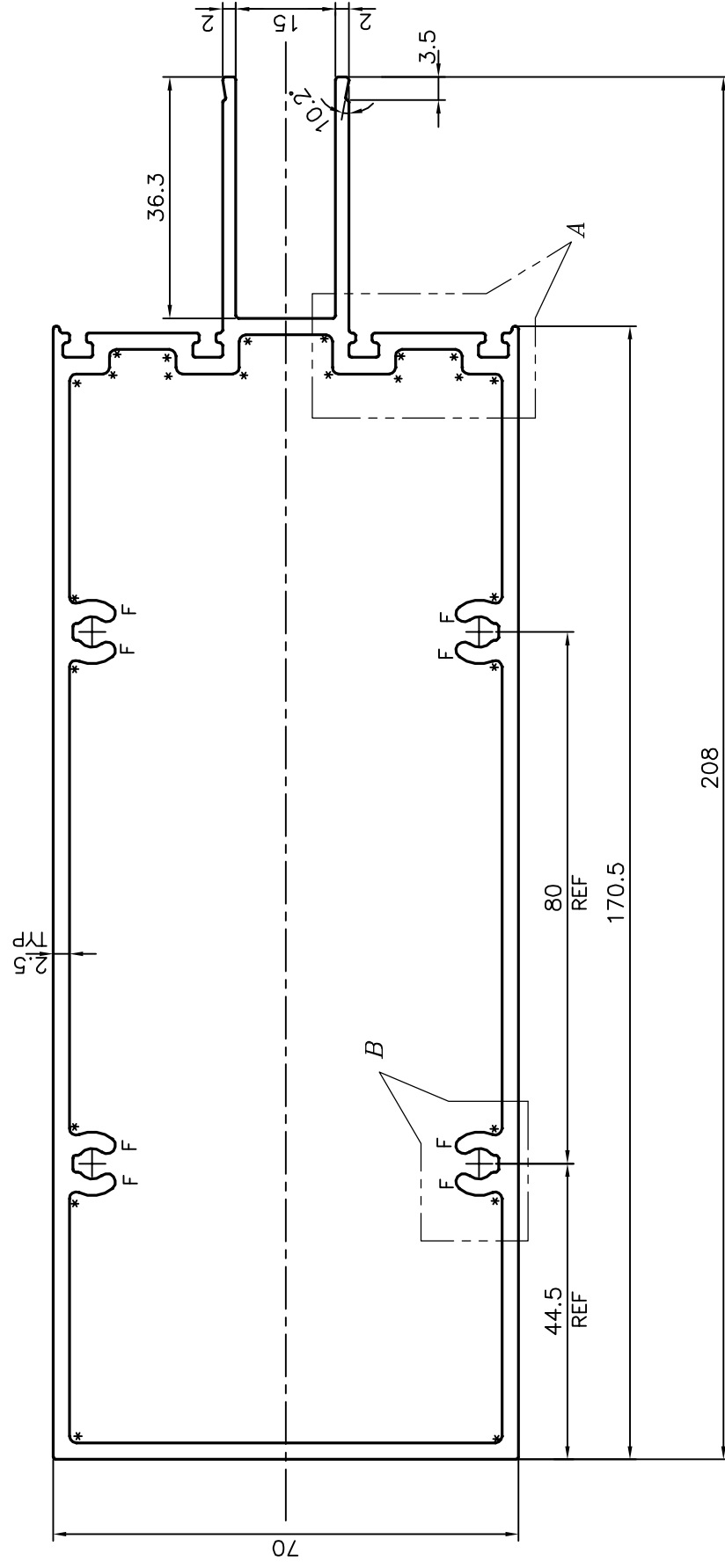
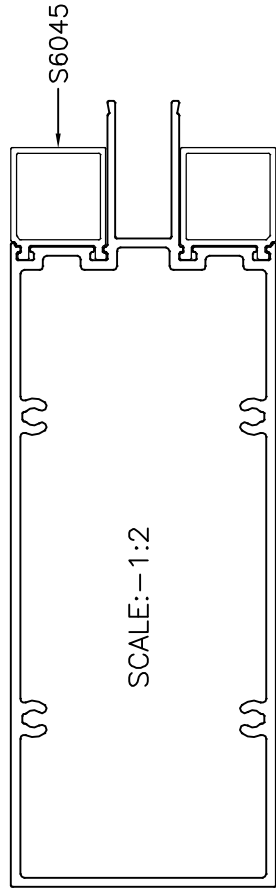
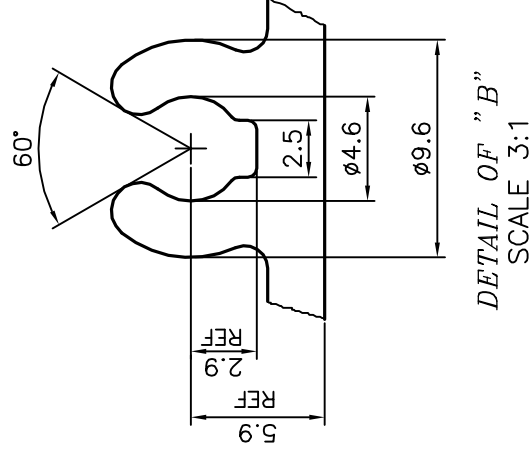
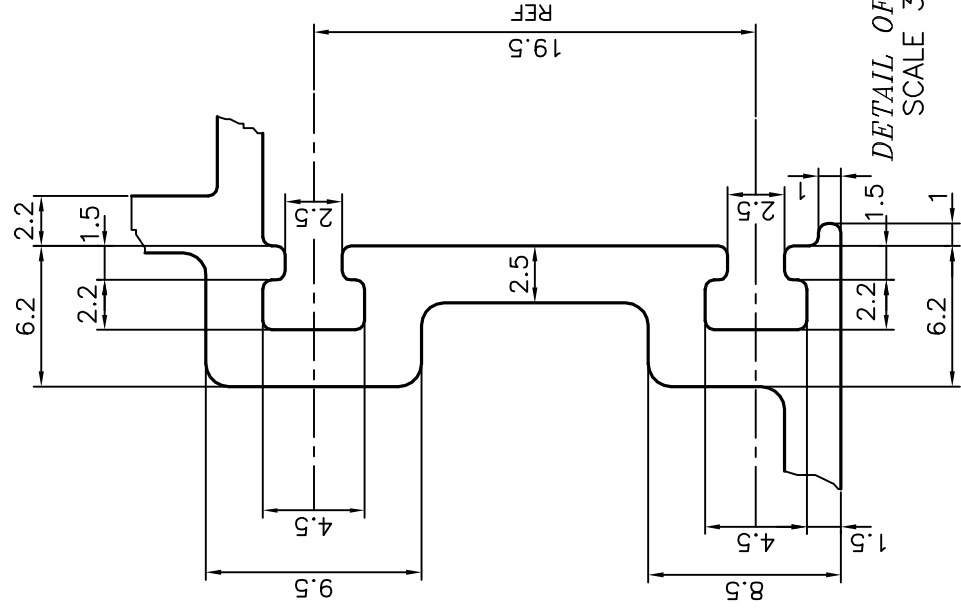


P-18173-1

S6052



F = FULL RADIUS (8 PLACES)
 * = 1.0 RADIUS (24 PLACES)



TOLERANCES ON OVERALL DIMENSIONS OF HOLLOW SECTIONS

UPTO 20.0mm - ±0.30	UPTO 80.0mm - ±0.70	UPTO 180.0mm - ±1.27	1. STRAIGHTNESS=1.7mm/M
UPTO 30.0mm - ±0.38	UPTO 100.0mm - ±0.80	UPTO 200.0mm - ±1.40	2. TWIST=1.7mm/M
UPTO 40.0mm - ±0.45	UPTO 120.0mm - ±0.90	UPTO 225.0mm - ±1.52	3. ANGULARITY= ±2°
UPTO 50.0mm - ±0.52	UPTO 140.0mm - ±1.00		4. FLATNESS =0.006xWIDTH
UPTO 60.0mm - ±0.60	UPTO 160.0mm - ±1.14		

<p>JINDAL SYMBOL OF QUALITY AN ISO 9001 COMPANY</p>	<p>JINDAL ALUMINIUM LTD. BANGALORE-560073 (INDIA)</p>		DRAWN J.P.KAUSHIK 22-05-2018
			CHECKED
			APPROVED B.NATARAJA 01-12-2018
			SCALE 1:1
1. ALL DIMENSIONS ARE IN mm. 2. ROUND OFF ALL SHARP CORNERS WITH 0.40 mm. 3. TOLERANCES WILL BE AS PER IS:6477-1983 UNLESS OTHERWISE SPECIFIED			AREA mm ² 1542.341
PARTY'S NAME GLOBAL SYNDICATE, BANGALORE			PERIMETER mm. 670.538
PARTY'S DRAWING No. AS PER DRAWING			WEIGHT kg/m 4.164
ALLOY & TEMPER 6063 T6			DRAWING No. SECTION No. P-18173-1 -
DESCRIPTION MID TRANSOM SECTION			S6052