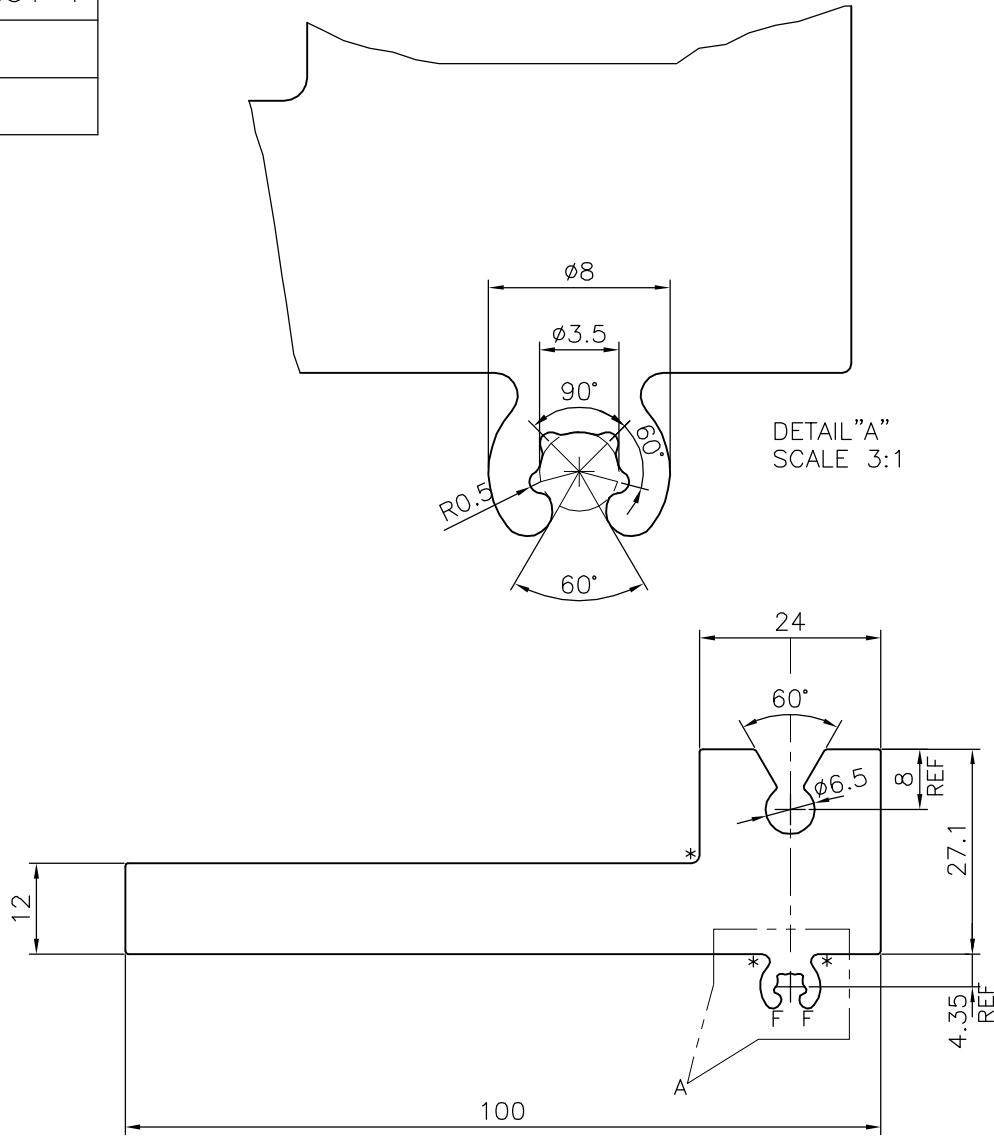


P-19084-1

S6145



DETAIL "A"
SCALE 3:1

F = FULL RADIUS(2 PLACES)

* = 1.0 RADIUS(3 PLACES)

TOLERANCES ON OVERALL WIDTHS & WIDTHS ACROSS FLATS OF BARS, & REGULAR SECTIONS

UPTO 6.40mm - ±0.20	UPTO 32.0mm - ±0.38	UPTO 120.0mm - ±0.85	UPTO 320.00mm - ±1.70
UPTO 10.0mm - ±0.23	UPTO 50.0mm - ±0.46	UPTO 160.0mm - ±1.02	
UPTO 12.0mm - ±0.25	UPTO 60.0mm - ±0.53	UPTO 200.0mm - ±1.14	
UPTO 16.0mm - ±0.28	UPTO 80.0mm - ±0.69	UPTO 250.0mm - ±1.40	
UPTO 25.0mm - ±0.30	UPTO 100.0mm - ±0.75	UPTO 300.0mm - ±1.65	



SYMBOL OF QUALITY
AN ISO 9001 COMPANY

JINDAL ALUMINIUM LTD.
BANGALORE-560073 (INDIA)

	NAME	DATE
DRAWN	J.P.KAUSHIK	06-02-2019
CHECKED		
APPROVED	B.NATARAJA	22-02-2019

1. ALL DIMENSIONS ARE IN mm.
2. ROUND OFF ALL SHARP CORNERS WITH 0.40 mm.
3. TOLERANCES WILL BE AS PER IS:3965-1981 UNLESS OTHERWISE SPECIFIED

SCALE	1:1
AREA mm ²	1532.839
PERIMETER mm.	297.698
WEIGHT kg/m	4.139

PARTY'S NAME	ANGLE FACADE ENGINEERS PVT. LTD., THANE
PARTY'S DRAWING No.	AFEPL-10
ALLOY & TEMPER	6061 T6
DESCRIPTION	TOP BRACKET SECTION

DRAWING No.	SECTION No.
P-19084-1	-
S6145	S6145