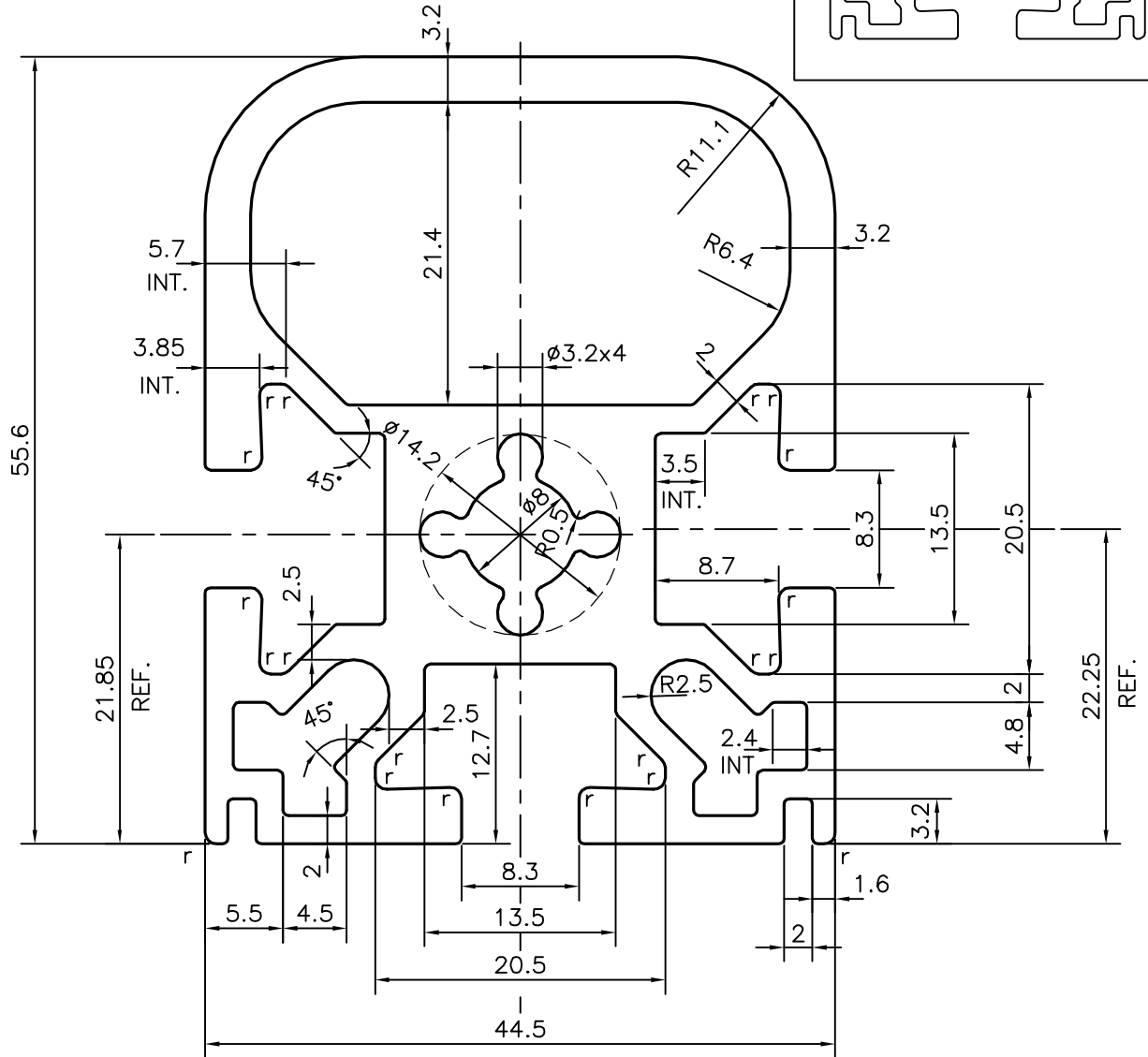
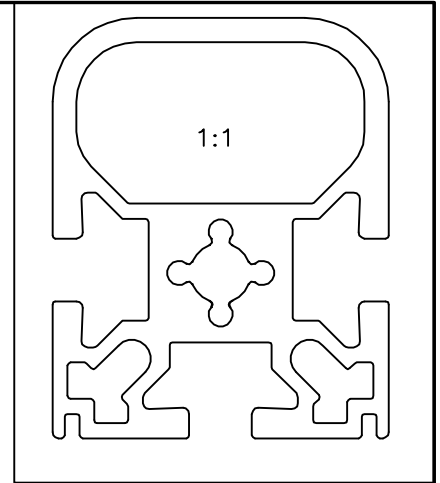


P-18947

S6168



r=R0.8 mm (20 PLACES)



SYMBOL OF QUALITY  
AN ISO 9001 COMPANY

**JINDAL ALUMINIUM LTD.**  
BANGALORE-560073 (INDIA)

|                      | NAME        | DATE       |
|----------------------|-------------|------------|
| DRAWN                | DARPAN      | 12-12-2018 |
| CHECKED              |             |            |
| APPROVED             | B.NATARAJA  | 08-03-2019 |
| SCALE                |             | 2:1        |
| AREA mm <sup>2</sup> |             | 916.967    |
| PERIMETER mm.        |             | 332.969    |
| WEIGHT kg/m          |             | 2.476      |
| DRAWING No.          | SECTION No. |            |
| P-18947              | -           |            |
| S6168                | S6168       |            |
|                      |             |            |
|                      |             |            |

1. ALL DIMENSIONS ARE IN mm.
2. ROUND OFF ALL SHARP CORNERS WITH 0.40 mm.
3. TOLERANCES WILL BE AS PER IS:6477-1983 , UNLESS OTHERWISE SPECIFIED

|                     |  |
|---------------------|--|
| PARTY'S NAME        | KEWAUNEE SCIENTIFIC CORPORATION INDIA<br>PVT LTD,BANGALORE |
| PARTY'S DRAWING No. | AS PER AUTOCAD DRAWING                                     |
| ALLOY & TEMPER      | 6063 T6  |
| DESCRIPTION         | MISC. SECTION  |