
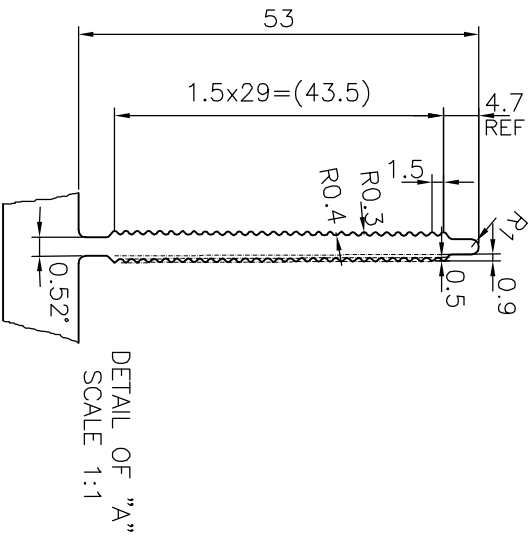


* = 1.0 RADIUS (32 PLACES)

 <p>SYMBOL OF QUALITY AN ISO 9001 COMPANY</p>		<p>JINDAL ALUMINIUM LTD. BANGALORE-560073 (INDIA)</p>		DRAWN	NAME	DATE
				CHECKED	J.P. KAUSHIK	09-03-2019
<p>1. ALL DIMENSIONS ARE IN mm. 2. ROUND OFF ALL SHARP CORNERS WITH 0.40 mm. 3. TOLERANCES WILL BE AS PER IS:3965-1981, UNLESS OTHERWISE SPECIFIED</p>		<p>PARTY'S NAME ROTOMAG MOTORS & CONTROLS PVT. LTD., ANAND</p>		APPROVED	B.NATARAJA	16-03-2019
				SCALE	1:1	
<p>PARTY'S DRAWING No. SMP-SM-649 (SHEET 1 OF 2)</p>		<p>WEIGHT kg/m 18.121</p>		AREA	6711.511	
				PERIMETER	3020.26	
<p>ALLOY & TEMPER 6063 T6</p>		<p>DRAWING No. P-19247</p>		<p>SECTION No. S6185</p>		
<p>DESCRIPTION HEAT SINK SECTION</p>						



DETAIL OF "A"
SCALE 1:1