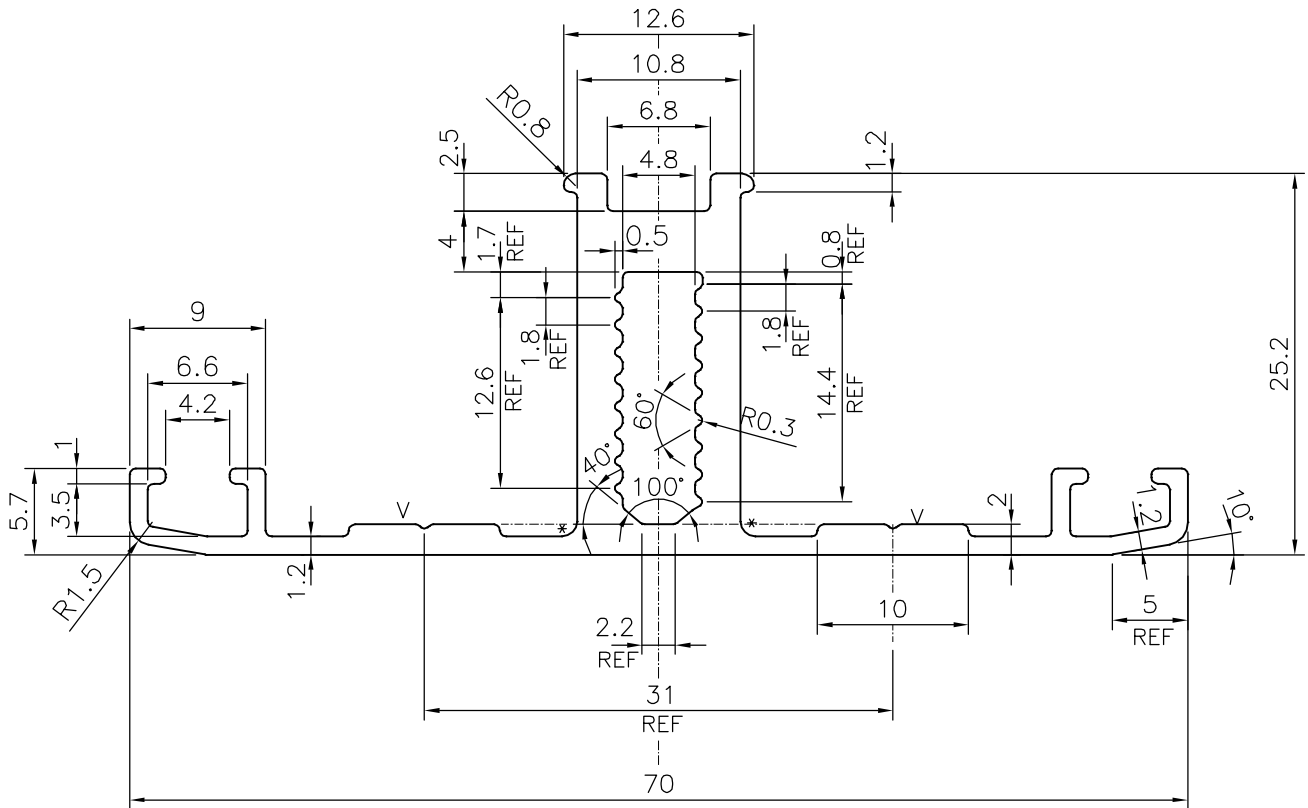
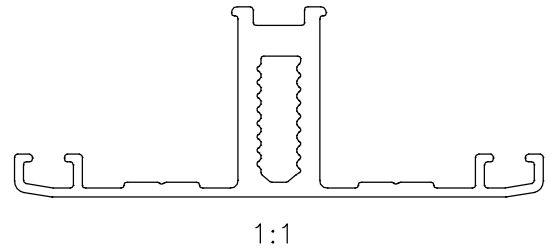


P-19371

S6224



* = 1.0 RADIUS (2 PLACES)

V = V GROOVE 0.3x90° (2 PLACES)



SYMBOL OF QUALITY
AN ISO 9001 COMPANY

JINDAL ALUMINIUM LTD.
BANGALORE-560073 (INDIA)

	NAME	DATE
DRAWN	J.P.KAUSHIK	03-04-2019
CHECKED		
APPROVED	B.NATARAJA	24-04-2019
SCALE		2:1
AREA mm ²		283.709
PERIMETER mm.		236.513
WEIGHT kg/m		0.766
DRAWING No.	SECTION No.	
P-19371	-	
S6224	S6224	

1. ALL DIMENSIONS ARE IN mm.
2. ROUND OFF ALL SHARP CORNERS WITH 0.40 mm.
3. TOLERANCES WILL BE AS PER IS:6477-1983 UNLESS OTHERWISE SPECIFIED

PARTY'S NAME	PALRAM INDIA PVT. LTD., KANDIVALI
PARTY'S DRAWING No.	AS PER DRAWING
ALLOY & TEMPER	6063 T6
DESCRIPTION	MISC. SECTION