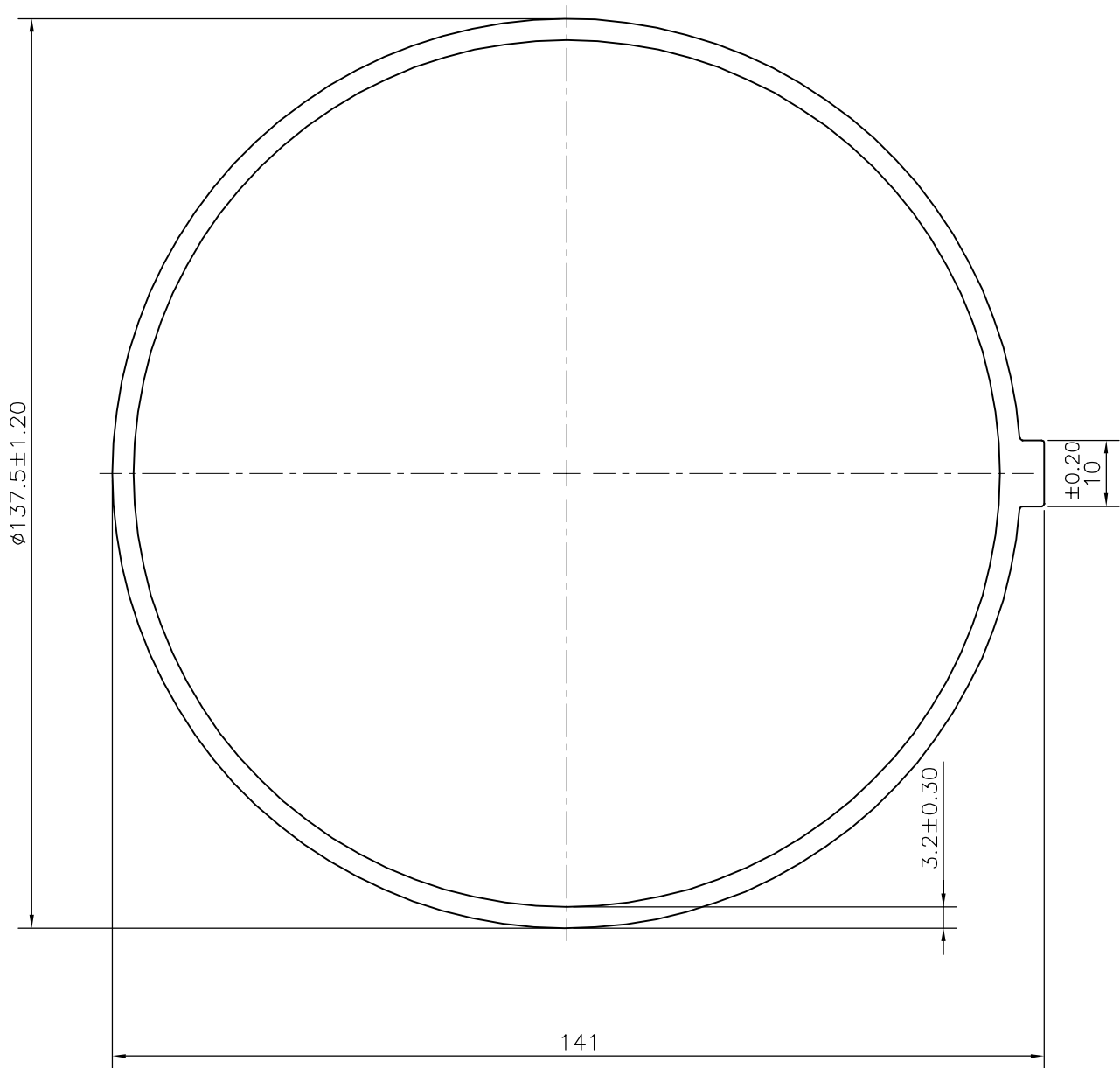


P-19438

S6231



1. STRAIGHTNESS=1.7mm/M
2. TWIST=1.7mm/M



SYMBOL OF QUALITY
AN ISO 9001 COMPANY

JINDAL ALUMINIUM LTD.
BANGALORE-560073 (INDIA)

	NAME	DATE
DRAWN	J.P.KAUSHIK	20-04-2019
CHECKED		
APPROVED	B.NATARAJA	26-04-2019
SCALE		1:1
AREA mm ²		1385.726
PERIMETER mm.		438.694
WEIGHT kg/m		3.741
DRAWING No.	SECTION No.	
P-19438	-	
S6231	S6231	

1. ALL DIMENSIONS ARE IN mm.
2. ROUND OFF ALL SHARP CORNERS WITH 0.40 mm.
3. TOLERANCES WILL BE AS PER IS:6477-1983 UNLESS OTHERWISE SPECIFIED

PARTY'S NAME L.J. TECHNOLOGIES, HYDERABAD

PARTY'S DRAWING No. LJ/2019/WM/P4

ALLOY & TEMPER 6063 T6

DESCRIPTION MISC. TUBE