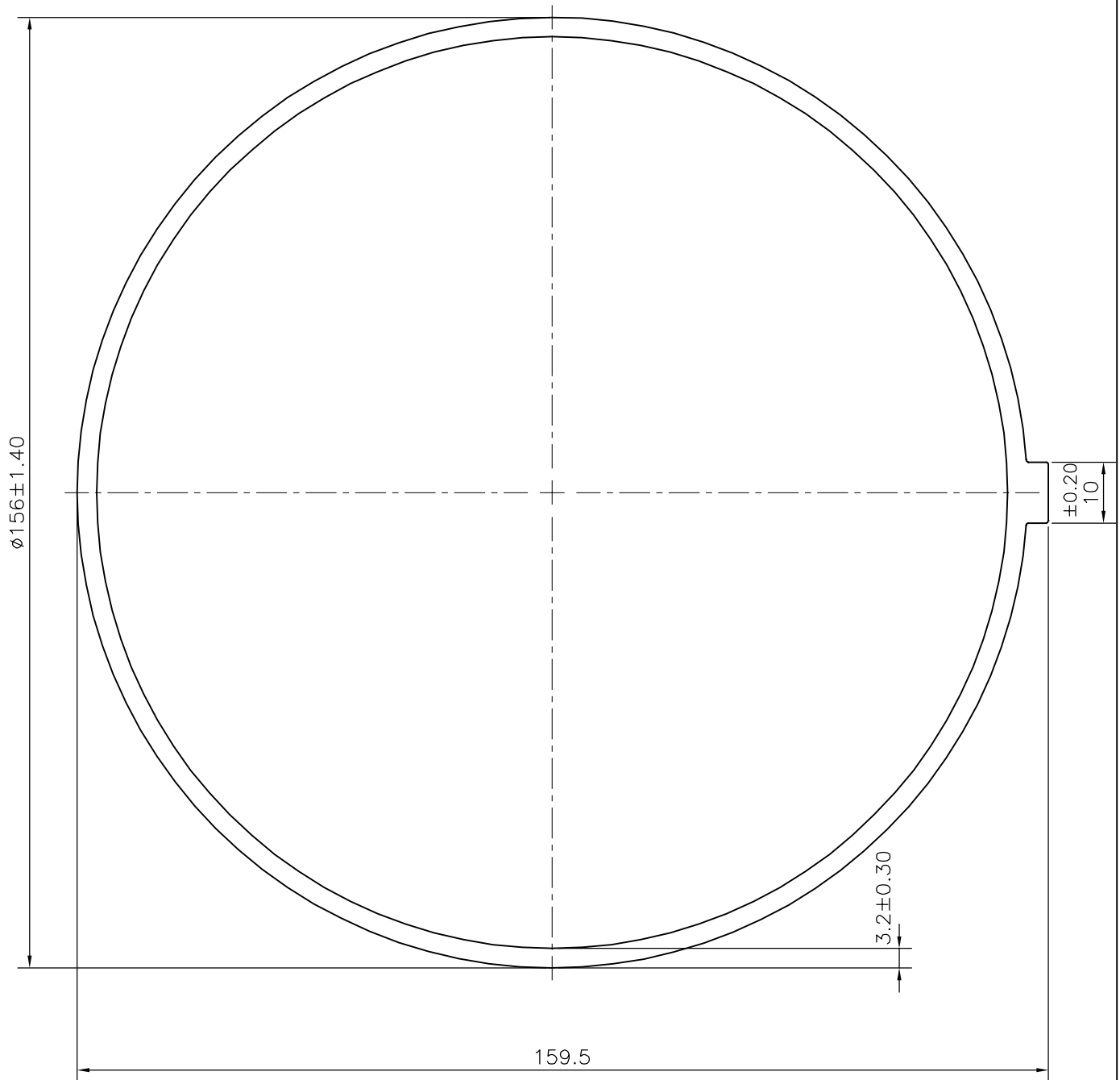



P-19439

S6232



- 1. STRAIGHTNESS=1.7mm/M
- 2. TWIST=1.7mm/M

 SYMBOL OF QUALITY AN ISO 9001 COMPANY	<b>JINDAL ALUMINIUM LTD.</b> <i>BANGALORE-560073 (INDIA)</i>	NAME		DATE
		DRAWN	J.P.KAUSHIK	20-04-2019
1. ALL DIMENSIONS ARE IN mm. 2. ROUND OFF ALL SHARP CORNERS WITH 0.40 mm. 3. TOLERANCES WILL BE AS PER IS:6477-1983 UNLESS OTHERWISE SPECIFIED		CHECKED		
		APPROVED	<i>B.NATARAJA</i>	26-04-2019
PARTY'S NAME L.J. TECHNOLOGIES, HYDERABAD		SCALE		1:1
		AREA mm <sup>2</sup>		1571.638
PARTY'S DRAWING No. LJ/2019/WM/P3		PERIMETER mm.		496.766
		WEIGHT kg/m		4.243
ALLOY & TEMPER 6063 T6		DRAWING No.		SECTION No.
		P-19439		-
DESCRIPTION MISC. TUBE		S6232		S6232