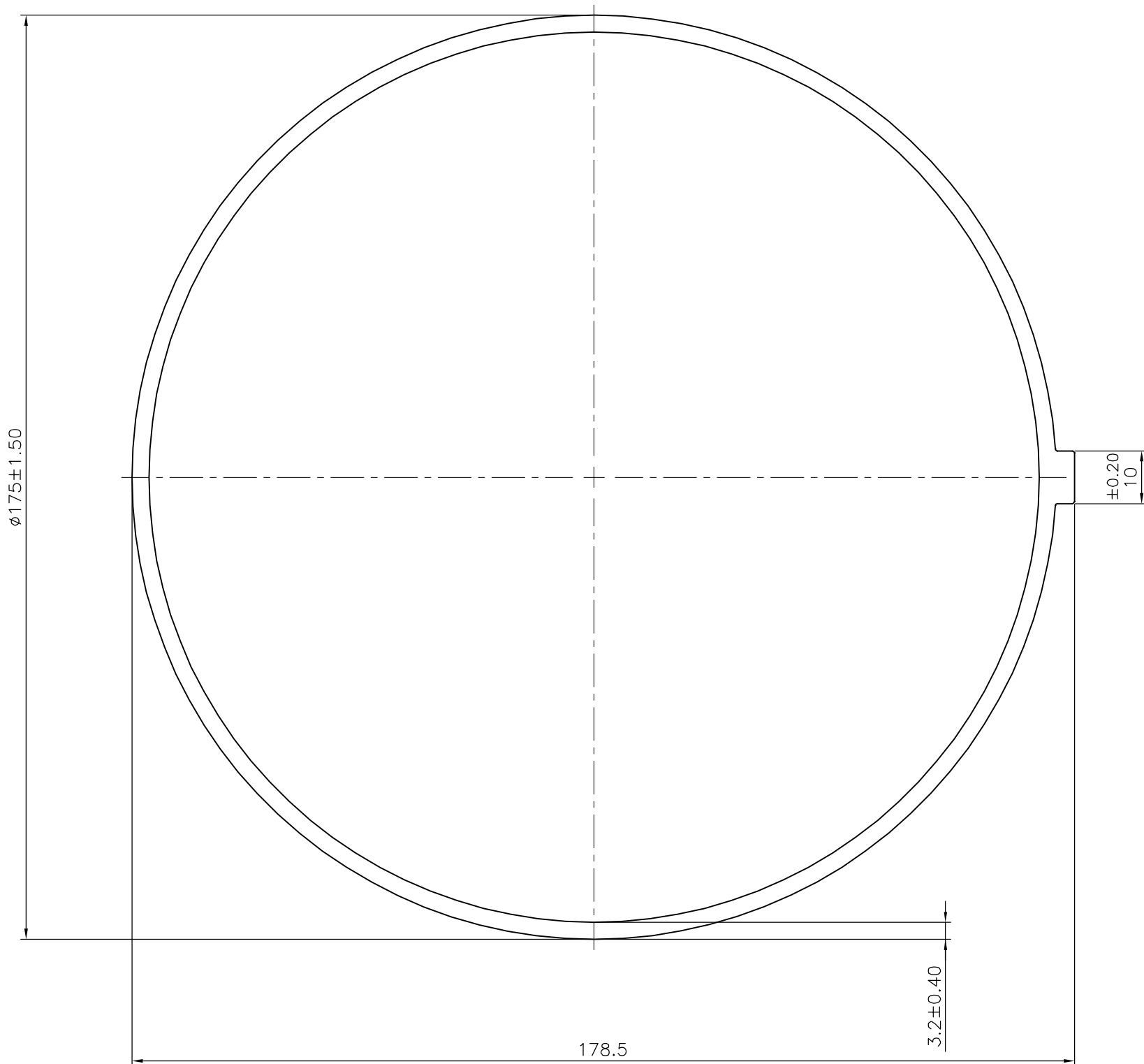



P-19440

S6233



- 1. STRAIGHTNESS=1.7mm/M
- 2. TWIST=1.7mm/M

 SYMBOL OF QUALITY AN ISO 9001 COMPANY	<b>JINDAL ALUMINIUM LTD.</b> BANGALORE-560073 (INDIA)	NAME	DATE
		DRAWN	J.P.KAUSHIK
1. ALL DIMENSIONS ARE IN mm. 2. ROUND OFF ALL SHARP CORNERS WITH 0.40 mm. 3. TOLERANCES WILL BE AS PER IS:6477-1983 , UNLESS OTHERWISE SPECIFIED		CHECKED	
		APPROVED	B.NATARAJA
PARTY'S NAME L.J. TECHNOLOGIES, HYDERABAD		SCALE	1:1
		AREA mm <sup>2</sup>	1762.589
PARTY'S DRAWING No. LJ/2019/WM/P2		PERIMETER mm.	556.417
		WEIGHT kg/m	4.759
ALLOY & TEMPER 6063 T6		DRAWING No.	SECTION No.
		P-19440	-
DESCRIPTION MISC. TUBE		S6233	S6233