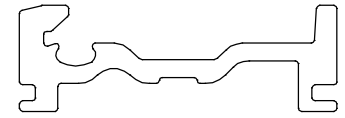
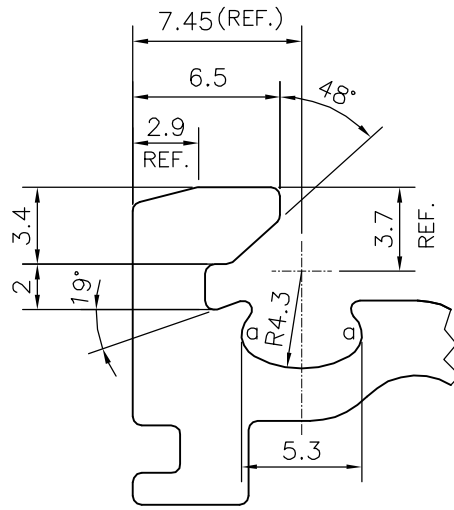


P-18951-2

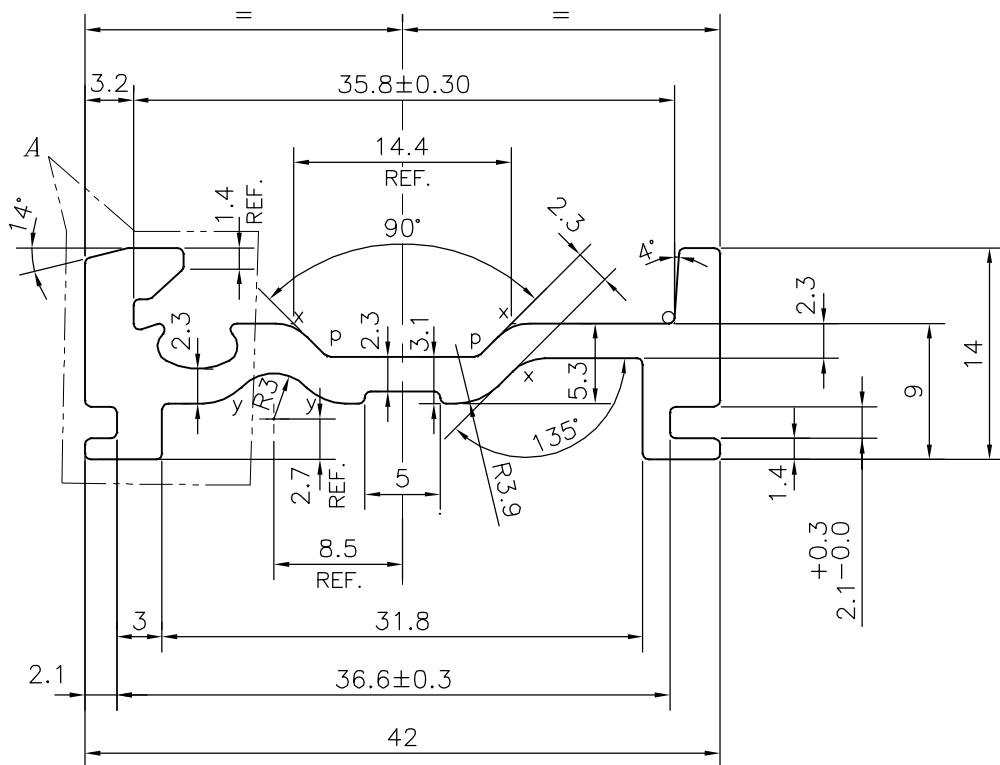
S6252



SCALE: - 1:1

DETAIL OF "A"

SCALE 3:1



- a = R1.1 mm. (2 PLACES)
- x = R3 mm. (3 PLACES)
- y = R3.50 mm (2 PLACES)
- p = R0.60 mm (2 PLACES)



SYMBOL OF QUALITY
AN ISO 9001 COMPANY

JINDAL ALUMINIUM LTD.
BANGALORE-560073 (INDIA)

	NAME	DATE
DRAWN	DARPAN	07-03-2019
CHECKED		
APPROVED	B.NATARAJA	20-05-2019
SCALE		2:1
AREA mm ²		204.996
PERIMETER mm.		154.273
WEIGHT kg/m		0.553
DRAWING No.	SECTION No.	
P-18951-2	-	
S6252	S6252	

1. ALL DIMENSIONS ARE IN mm.
2. ROUND OFF ALL SHARP CORNERS WITH 0.40 mm.
3. TOLERANCES WILL BE AS PER IS:3965-1981 , UNLESS OTHERWISE SPECIFIED

PARTY'S NAME	PARAMOUNT INDUSTRIES, BANGALORE
PARTY'S DRAWING No.	AS PER DRAWING
ALLOY & TEMPER	HE9 WP
DESCRIPTION	ALUMINIUM EXTRUSION-20AMS