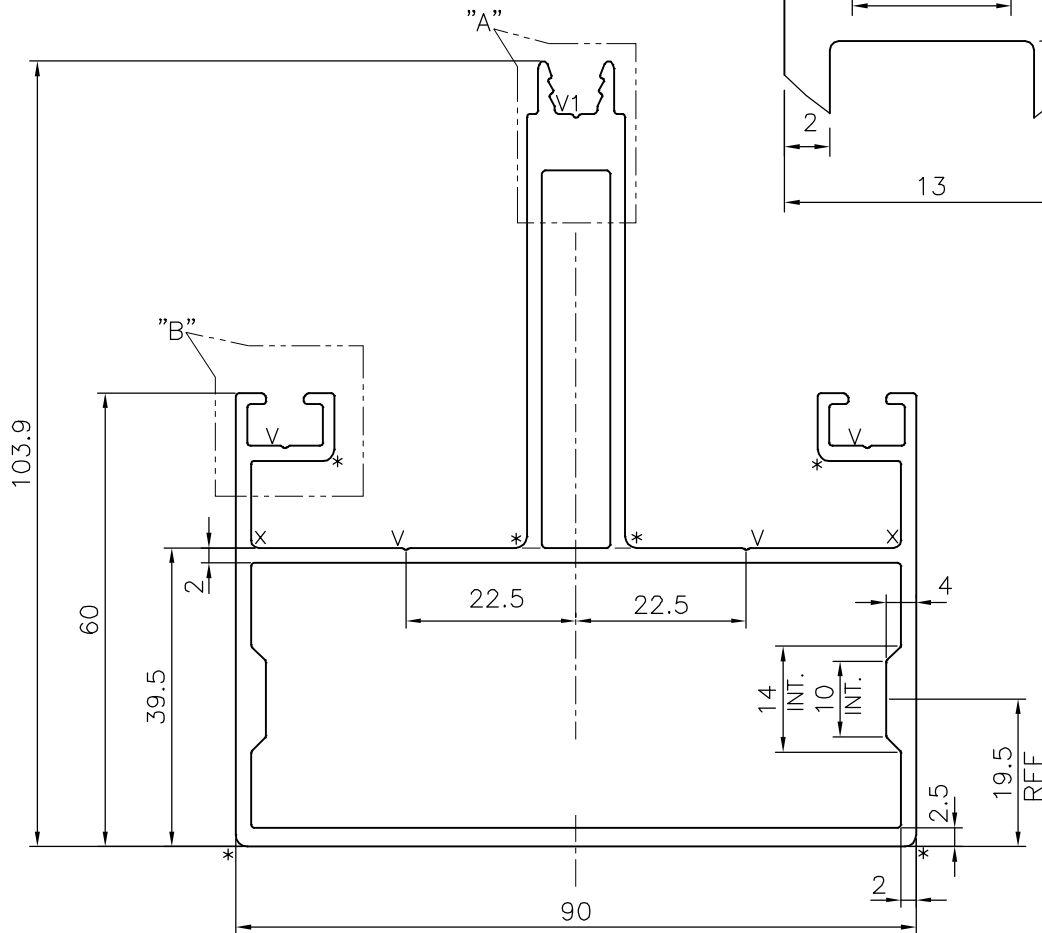
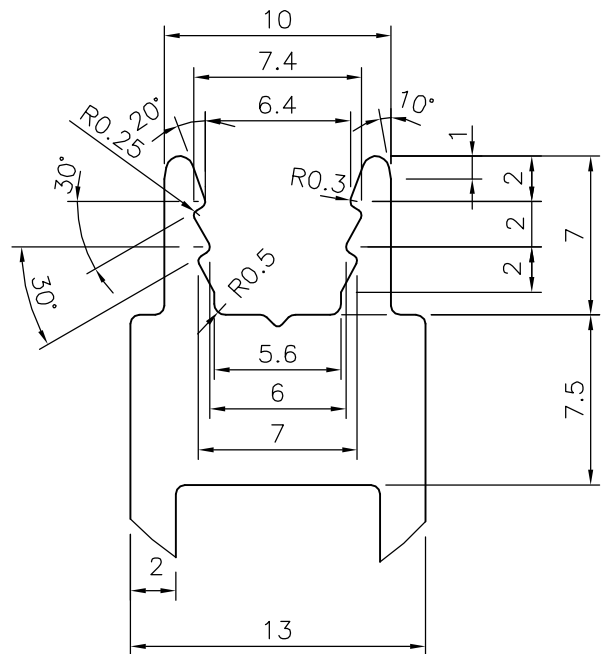
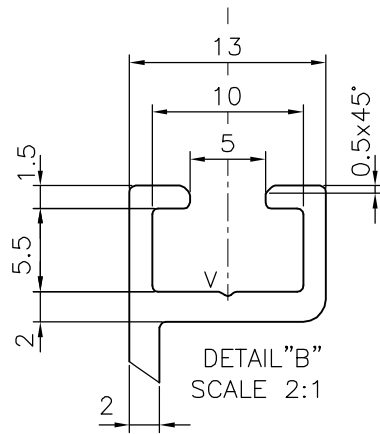


P-19593-1

S6287



**DETAIL - A**  
SCALE 3:1

V1 = V GROOVE 0.5x90° (1 PLACES)

x = 1.0 RADIUS (2 PLACES)

\* = 1.5 RADIUS (6 PLACES)

V = V GROOVE 0.3x90° (4 PLACES)

**TOLERANCES ON OVERALL DIMENSIONS OF HOLLOW SECTIONS**

UPTO 20.0mm - ±0.30	UPTO 80.0mm - ±0.70	UPTO 180.0mm - ±1.27	1. STRAIGHTNESS=1.7mm/M 2. TWIST=1.7mm/M 3. ANGULARITY= ±2° 4. FLATNESS =0.006xWIDTH
UPTO 30.0mm - ±0.38	UPTO 100.0mm - ±0.80	UPTO 200.0mm - ±1.40	
UPTO 40.0mm - ±0.45	UPTO 120.0mm - ±0.90	UPTO 225.0mm - ±1.52	
UPTO 50.0mm - ±0.52	UPTO 140.0mm - ±1.00		
UPTO 60.0mm - ±0.60	UPTO 160.0mm - ±1.14		



SYMBOL OF QUALITY  
AN ISO 9001 COMPANY

**JINDAL ALUMINIUM LTD.**  
BANGALORE-560073 (INDIA)

	NAME	DATE
DRAWN	J.P.KAUSHIK	08-06-2019
CHECKED		
APPROVED	B.NATARAJA	12-06-2019
SCALE		1:1
AREA mm <sup>2</sup>		1067.086
PERIMETER mm.		565.447
WEIGHT kg/m		2.881
DRAWING No.	SECTION No.	
P-19593-1	-	
S6287	S6287	

1. ALL DIMENSIONS ARE IN mm.
2. ROUND OFF ALL SHARP CORNERS WITH 0.40 mm.
3. TOLERANCES WILL BE AS PER IS:6477-1983, UNLESS OTHERWISE SPECIFIED

PARTY'S NAME	GLOBAL SYNDICATE, BANGALORE
PARTY'S DRAWING No.	AS PER DRAWING
ALLOY & TEMPER	6063 T6
DESCRIPTION	CURTAIN WALL SECTION