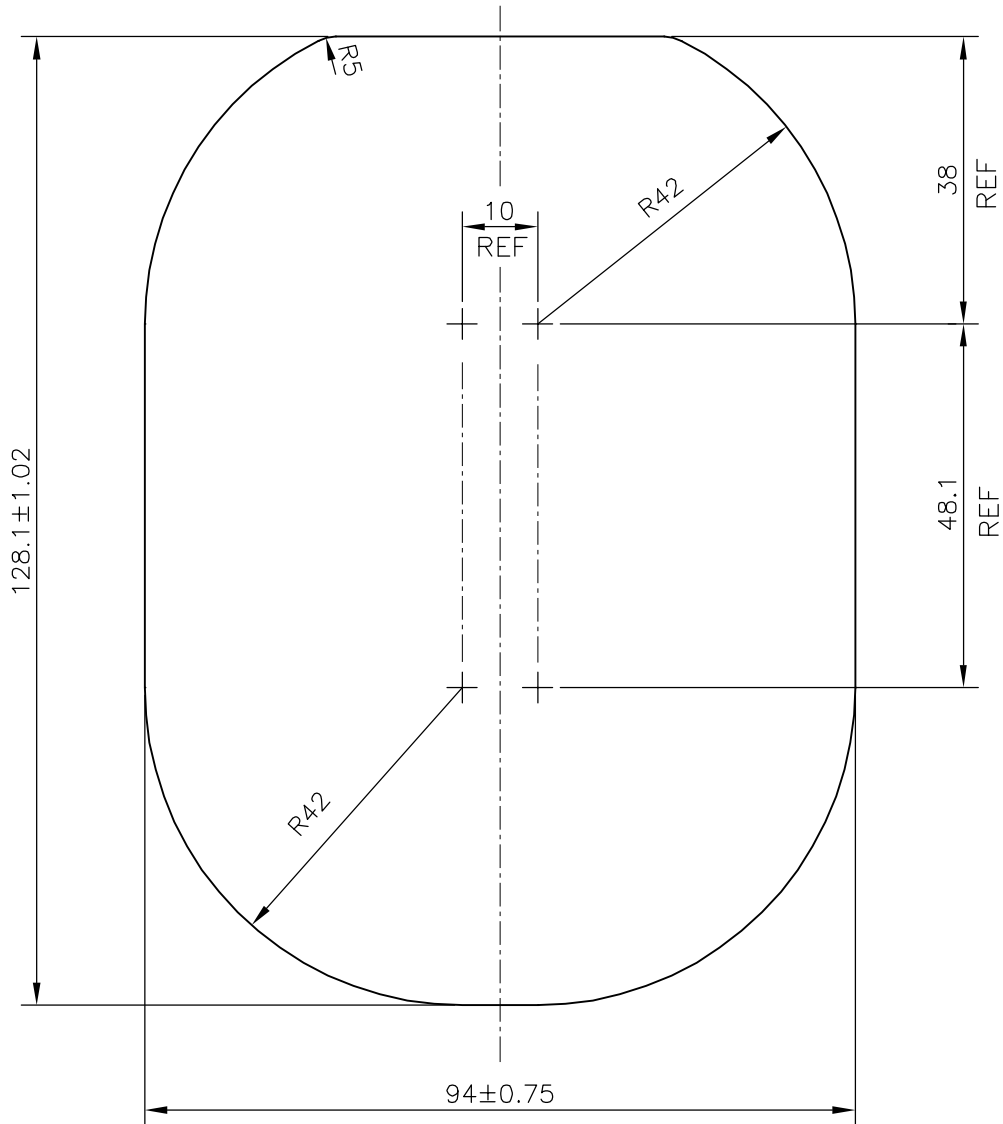


P-19513-1

S6298



- 1. STRAIGHTNESS=1.0mm/M
- 2. TWIST=1.0mm/M



SYMBOL OF QUALITY  
AN ISO 9001 COMPANY

**JINDAL ALUMINIUM LTD.**  
BANGALORE-560073 (INDIA)

	NAME	DATE
DRAWN	J.P.KAUSHIK	15-05-2019
CHECKED		
APPROVED	B.NATARAJA	17-06-2019
SCALE		1:1
AREA mm <sup>2</sup>		10766.611
PERIMETER mm.		378.833
WEIGHT kg/m		29.070
DRAWING No.	SECTION No.	
P-19513-1	-	
S6298	S6298	

- 1. ALL DIMENSIONS ARE IN mm.
- 2. ROUND OFF ALL SHARP CORNERS WITH 0.40 mm.
- 3. TOLERANCES WILL BE AS PER IS:3965-1981 , UNLESS OTHERWISE SPECIFIED

PARTY'S NAME	DYNAMATIC TECHNOLOGIES LTD., BANGALORE
PARTY'S DRAWING No.	550/3/32793
ALLOY & TEMPER	HE30 WP
DESCRIPTION	PUMP BODY SECTION