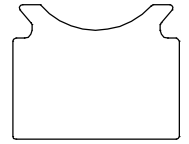
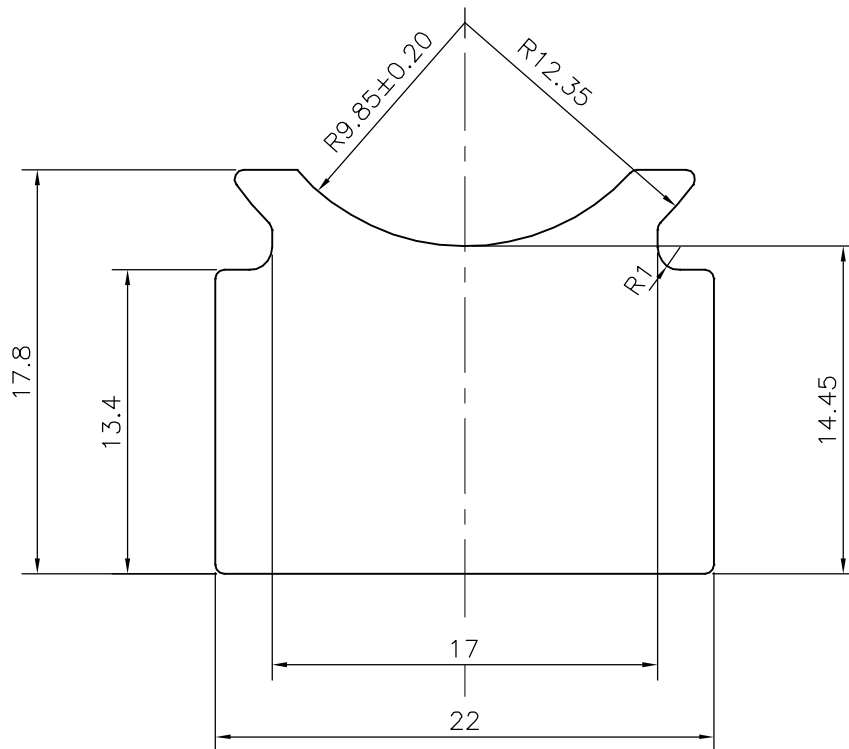


P-19572-2

S6311



1:1



SYMBOL OF QUALITY  
AN ISO 9001 COMPANY

**JINDAL ALUMINIUM LTD.**  
BANGALORE-560073 (INDIA)

	NAME	DATE
DRAWN	J.P.KAUSHIK	30-05-2019
CHECKED		
APPROVED	B.NATARAJA	26-06-2019
SCALE		3:1
AREA mm <sup>2</sup>		340.618
PERIMETER mm.		84.13
WEIGHT kg/m		0.920
DRAWING No.	SECTION No.	
P-19572-2	-	
S6311	S6311	

1. ALL DIMENSIONS ARE IN mm.
2. ROUND OFF ALL SHARP CORNERS WITH 0.40 mm.
3. TOLERANCES WILL BE AS PER IS:3965-1981 , UNLESS OTHERWISE SPECIFIED

PARTY'S NAME	GLOBAL AUTOTECH LTD., GREATER NOIDA
PARTY'S DRAWING No.	TC-ENQ-204
ALLOY & TEMPER	DA3103BD-0
DESCRIPTION	TUBE CONNECTOR INLET