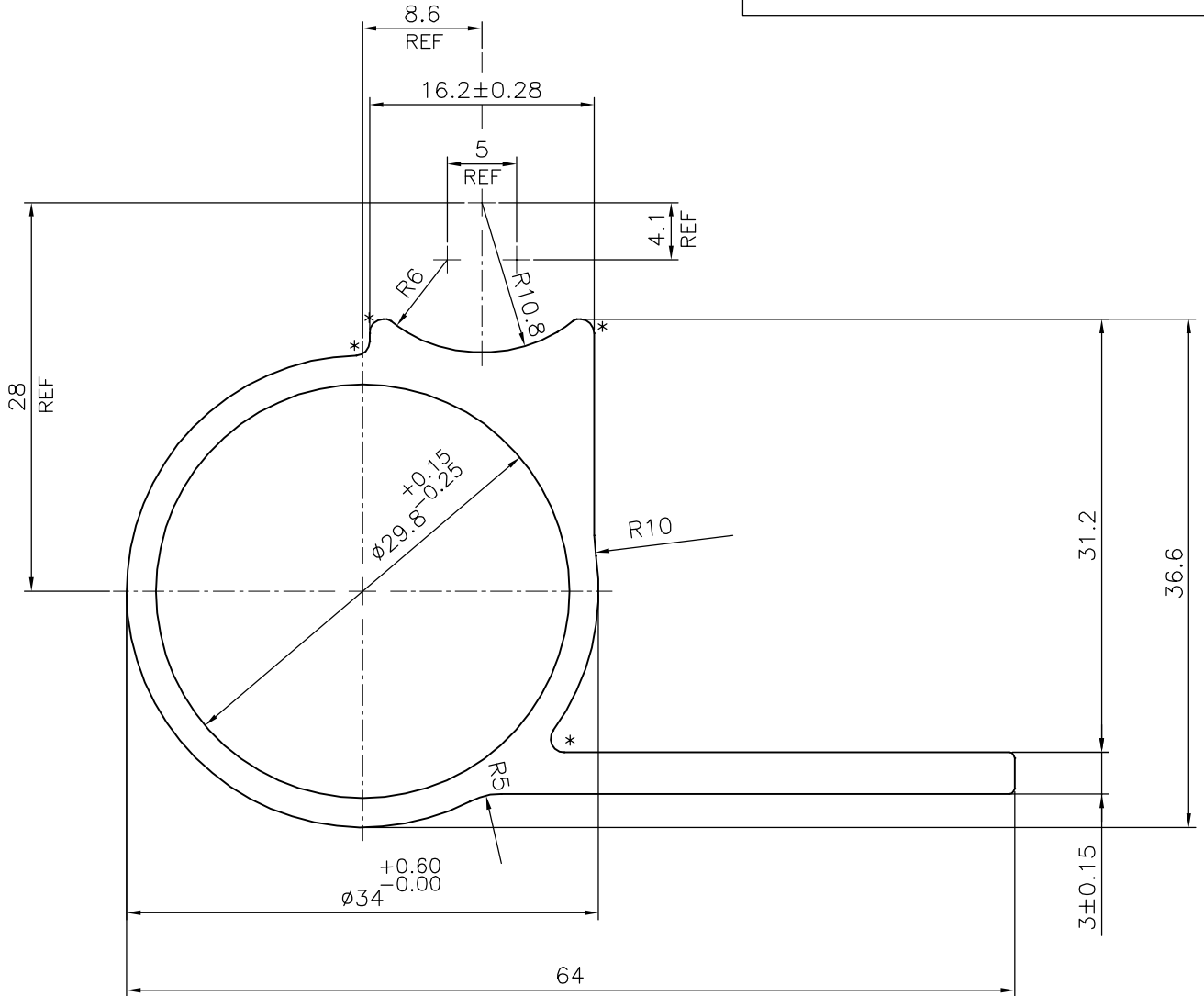
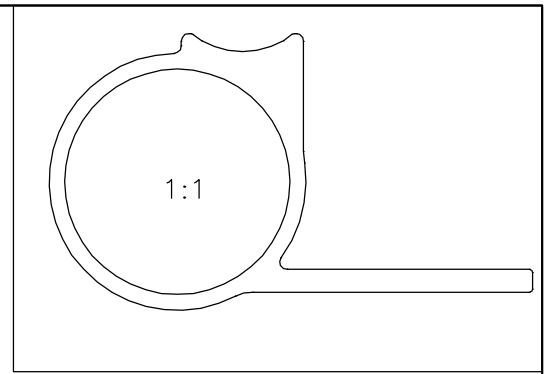


P-19606-2

S6331



\* = 1.0 RADIUS (4 PLACES)



SYMBOL OF QUALITY  
AN ISO 9001 COMPANY

**JINDAL ALUMINIUM LTD.**  
BANGALORE-560073 (INDIA)

	NAME	DATE
DRAWN	J.P.KAUSHIK	21-06-2019
CHECKED		
APPROVED	B.NATARAJA	01-07-2019
SCALE		2:1
AREA mm <sup>2</sup>		397.488
PERIMETER mm.		187.553
WEIGHT kg/m		1.073
DRAWING No.	SECTION No.	
P-19606-2	-	
S6331	S6331	

1. ALL DIMENSIONS ARE IN mm.
2. ROUND OFF ALL SHARP CORNERS WITH 0.40 mm.
3. TOLERANCES WILL BE AS PER IS:6477-1983 , UNLESS OTHERWISE SPECIFIED

PARTY'S NAME	YOONWOO AUTOMOTIVE INDIA PVT. LTD., PUNE
PARTY'S DRAWING No.	C50SA01 REV. A.01
ALLOY & TEMPER	6060 T6
DESCRIPTION	FORCE T1N KOMO FIT EXT.