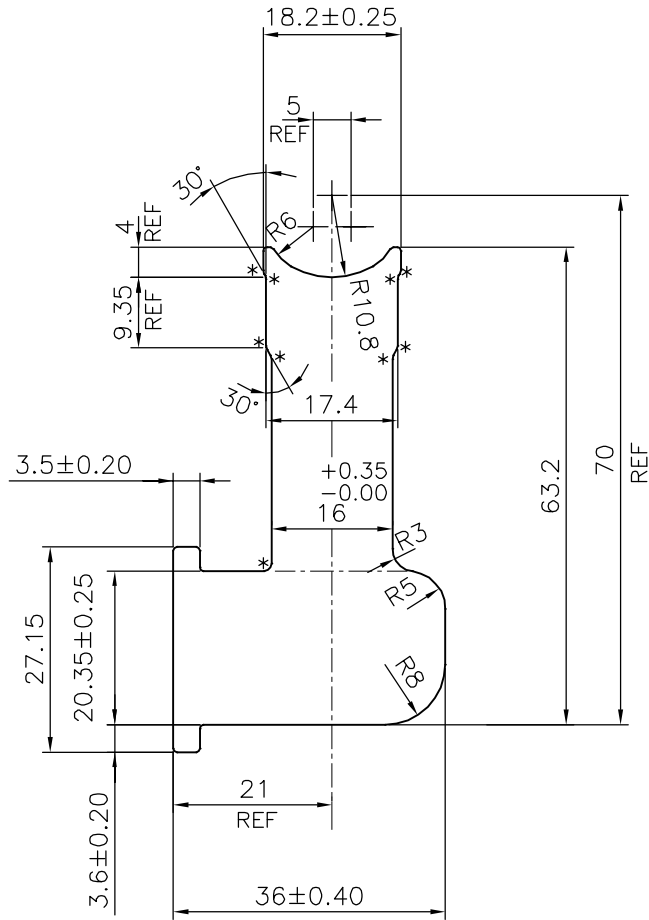


P-19607-2

S6332



* = 1.0 RADIUS (9 PLACES)
UNSPECIFIED RADIUS 0.5 mm



SYMBOL OF QUALITY
AN ISO 9001 COMPANY

JINDAL ALUMINIUM LTD.
BANGALORE-560073 (INDIA)

	NAME	DATE
DRAWN	J.P.KAUSHIK	21-06-2019
CHECKED		
APPROVED	B.NATARAJA	01-07-2019

1. ALL DIMENSIONS ARE IN mm.
2. ROUND OFF ALL SHARP CORNERS WITH 0.40 mm.
3. TOLERANCES WILL BE AS PER IS:3965-1981 , UNLESS OTHERWISE SPECIFIED

SCALE	1:1
AREA mm ²	1401.421
PERIMETER mm.	208.408
WEIGHT kg/m	3.784

PARTY'S NAME	YOONWOO AUTOMOTIVE INDIA PVT. LTD., PUNE
PARTY'S DRAWING No.	C649H01 REV. A.01
ALLOY & TEMPER	6060 T66
DESCRIPTION	FORCE T1N CONNECTING FLANGE

DRAWING No.	SECTION No.
P-19607-2	-
S6332	S6332