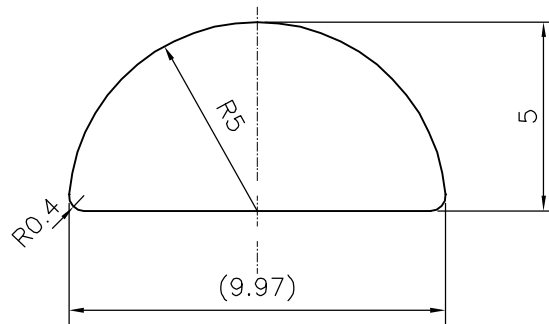


P-19848

S6361



1:1



SYMBOL OF QUALITY  
AN ISO 9001 COMPANY

**JINDAL ALUMINIUM LTD.**  
BANGALORE-560073 (INDIA)

	NAME	DATE
DRAWN	J.P.KAUSHIK	13-07-2019
CHECKED		
APPROVED	B.NATARAJA	23-07-2019

1. ALL DIMENSIONS ARE IN mm.
2. ROUND OFF ALL SHARP CORNERS WITH 0.40 mm.
3. TOLERANCES WILL BE AS PER IS:3965-1981 , UNLESS OTHERWISE SPECIFIED

SCALE	5:1
AREA mm <sup>2</sup>	39.192
PERIMETER mm.	25.329
WEIGHT kg/m	0.106

PARTY'S NAME	TEX TECH INDUSTRIES (INDIA) PVT. LTD., COIMBATORE	DRAWING No.	SECTION No.
PARTY'S DRAWING No.	AS PER DRAWING	P-19848	-
ALLOY & TEMPER	HE9 WP	S6361	S6361
DESCRIPTION	HALF ROUND-WIPER COMPLETE		