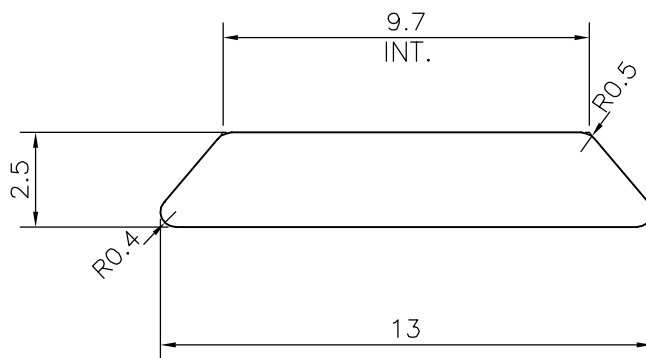


P-19849

S6362



1:1



SYMBOL OF QUALITY
AN ISO 9001 COMPANY

JINDAL ALUMINIUM LTD.
BANGALORE-560073 (INDIA)

	NAME	DATE
DRAWN	J.P.KAUSHIK	13-07-2019
CHECKED		
APPROVED	B.NATARAJA	23-07-2019

1. ALL DIMENSIONS ARE IN mm.
2. ROUND OFF ALL SHARP CORNERS WITH 0.40 mm.
3. TOLERANCES WILL BE AS PER IS:3965-1981 , UNLESS OTHERWISE SPECIFIED

SCALE	5:1
AREA mm ²	29.188
PERIMETER mm.	28.48
WEIGHT kg/m	0.079

PARTY'S NAME	TEX TECH INDUSTRIES (INDIA) PVT. LTD., COIMBATORE	DRAWING No.	SECTION No.
PARTY'S DRAWING No.	AS PER DRAWING	P-19849	-
ALLOY & TEMPER	HE9 WP	S6362	S6362
DESCRIPTION	PRESSURE BAR 2.5		