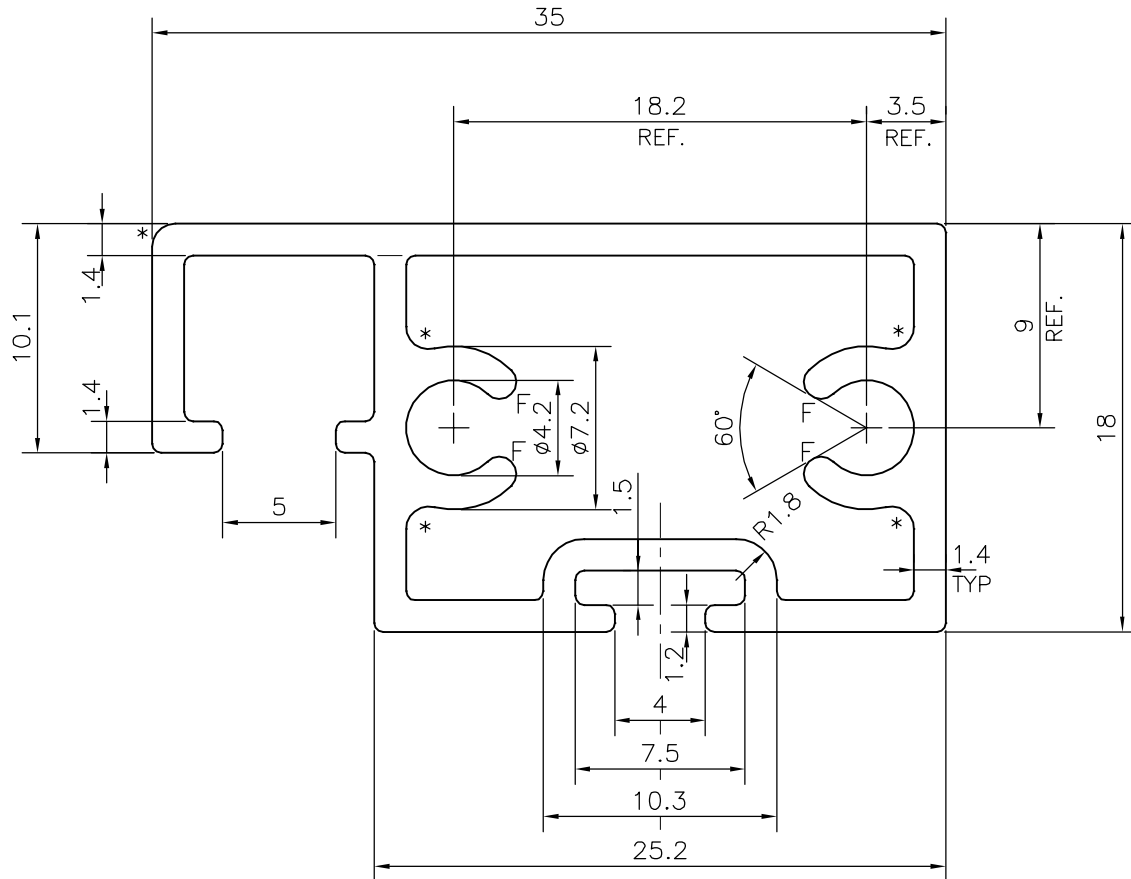
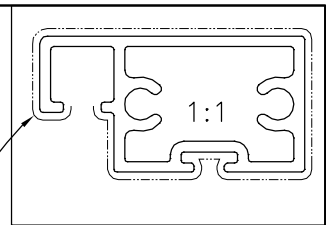


P-19872-1

S6385

EXPOSED SURFACE



* = 1.0 RADIUS (5 PLACES)
 F = FULL RADIUS(4 PLACES)



SYMBOL OF QUALITY
 AN ISO 9001 COMPANY

JINDAL ALUMINIUM LTD.
 BANGALORE-560073 (INDIA)

	NAME	DATE
DRAWN	J.P.KAUSHIK	29-07-2019
CHECKED		
APPROVED	B.NATARAJA	06-08-2019
SCALE		3:1
AREA	mm ²	187.398
PERIMETER	mm.	138.565
WEIGHT	kg/m	0.506
DRAWING No.	SECTION No.	
P-19872-1	-	
S6385	S6385	

1. ALL DIMENSIONS ARE IN mm.
2. ROUND OFF ALL SHARP CORNERS WITH 0.40 mm.
3. TOLERANCES WILL BE AS PER IS:6477-1983 , UNLESS OTHERWISE SPECIFIED

PARTY'S NAME	CITY CORPORATION LTD., PUNE
PARTY'S DRAWING No.	AS PER DRAWING
ALLOY & TEMPER	6063 T6
DESCRIPTION	WINDOW SECTION-MESH SHUTTER