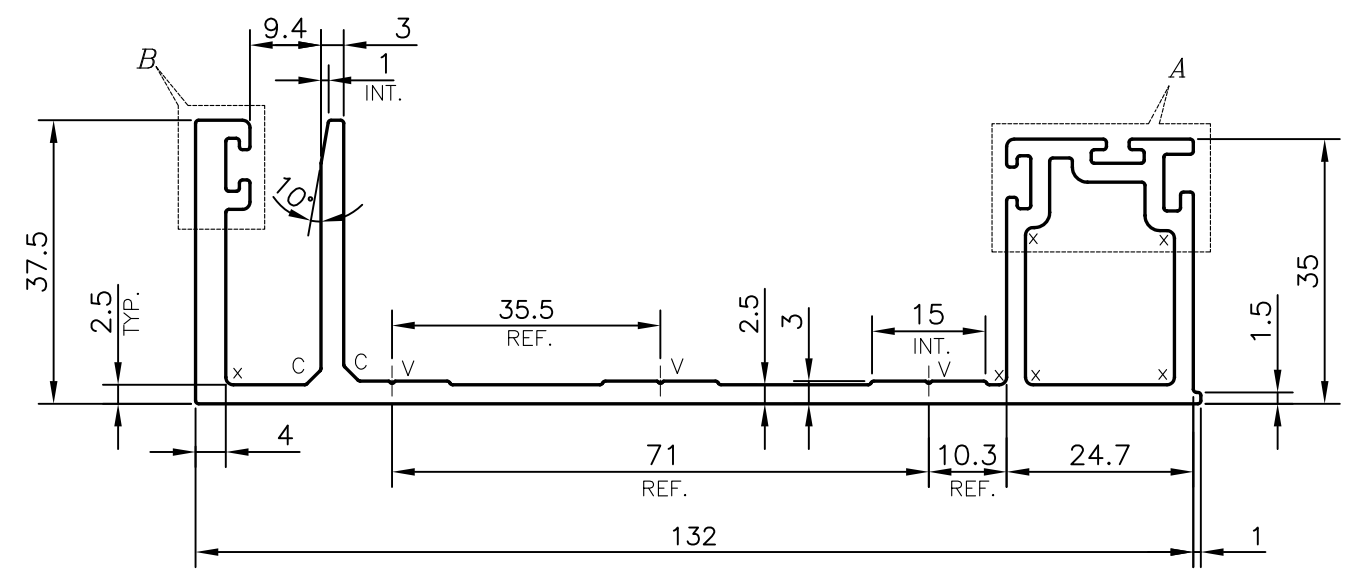
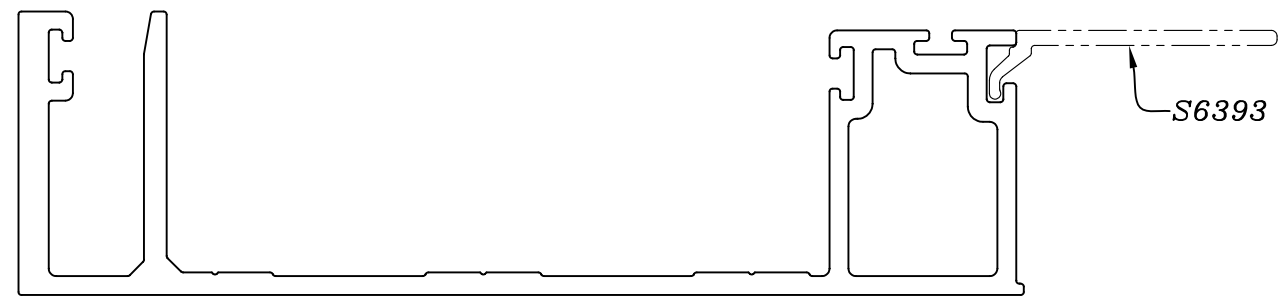
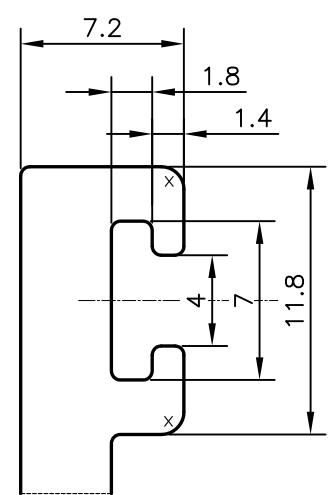


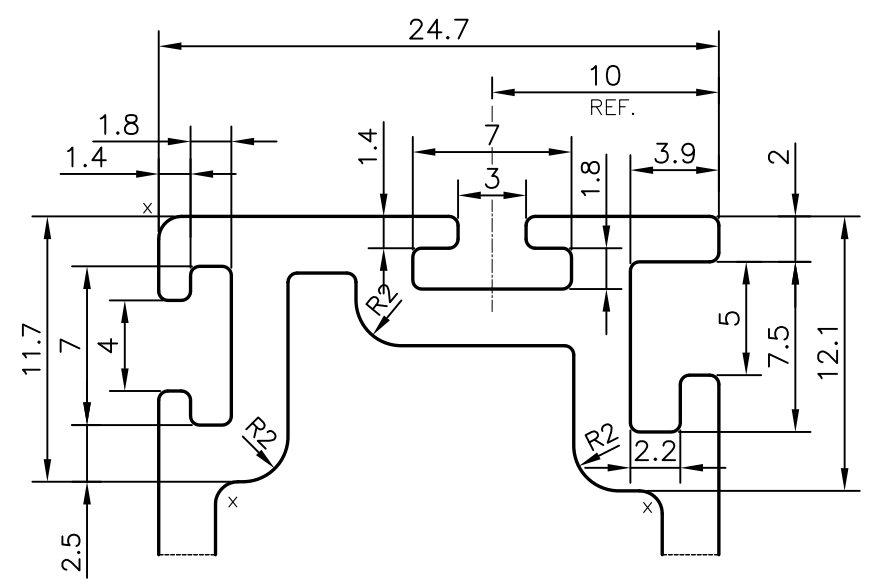
P-19751-1  
S6389



C = CHAMFER 2x45° (2 PLACES)  
X = RADIUS 1 mm. (9 PLACES)  
V = VEE GROOVE 0.3x90° (3 PLACES)




DETAIL OF "B"  
SCALE 3:1



DETAIL OF "A"  
SCALE 3:1

TOLERANCES ON OVERALL WIDTHS & WIDTHS ACROSS FLATS OF BARS, & REGULAR SECTIONS			
UPTO 6.40mm - ±0.20	UPTO 32.0mm - ±0.38	UPTO 120.0mm - ±0.85	1. STRAIGHTNESS=1.7 mm/M 2. TWIST=1.7 mm/M 3. ANGULARITY= ±2' 4. FLATNESS =0.007xWIDTH
UPTO 10.0mm - ±0.23	UPTO 50.0mm - ±0.46	UPTO 160.0mm - ±1.02	
UPTO 12.0mm - ±0.25	UPTO 60.0mm - ±0.53	UPTO 200.0mm - ±1.14	
UPTO 16.0mm - ±0.28	UPTO 80.0mm - ±0.69	UPTO 250.0mm - ±1.40	
UPTO 25.0mm - ±0.30	UPTO 100.0mm - ±0.75	UPTO 300.0mm - ±1.65	

 SYMBOL OF QUALITY AN ISO 9001 COMPANY	<b>JINDAL ALUMINIUM LTD.</b> BANGALORE-560073 (INDIA)	NAME	DATE
		DRAWN	PARVESH 09-07-2019
		CHECKED	
		APPROVED	B.NATARAJA 07-08-2019
1. ALL DIMENSIONS ARE IN mm. 2. ROUND OFF ALL SHARP CORNERS WITH 0.40 mm. 3. TOLERANCES WILL BE AS PER IS:6477-1983, UNLESS OTHERWISE SPECIFIED		SCALE	1:1
		AREA mm <sup>2</sup>	866.429
		PERIMETER mm.	523.474
		WEIGHT kg/m	2.339
PARTY'S NAME	ALUPLEX INDIA PVT. LTD., MUMBAI	DRAWING No.	SECTION No.
PARTY'S DRAWING No.	AS PER AUTOCAD DRAWING-AP-1924	P-19751-1	-
ALLOY & TEMPER	6063 T6	S6389	S6389
DESCRIPTION	CURTAIN WALL SECTION-AL-02		