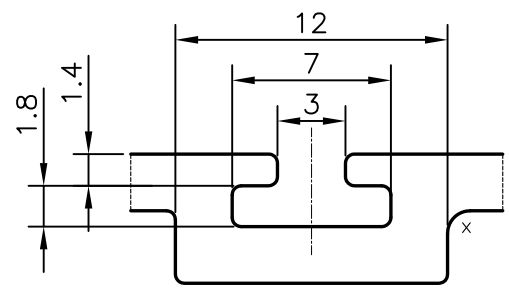
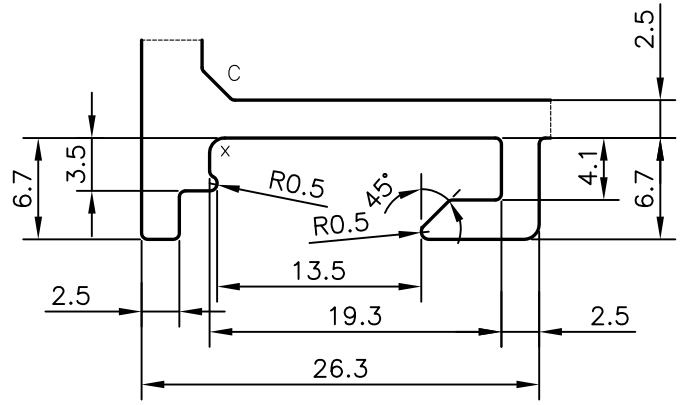


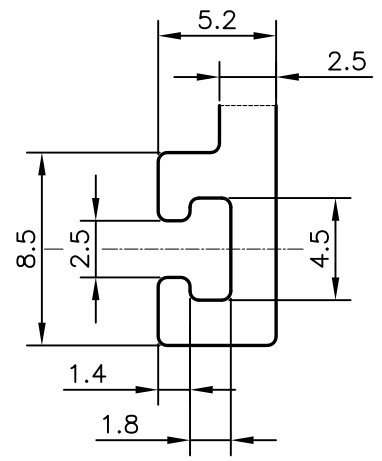
DETAIL OF "A"
SCALE 3:1



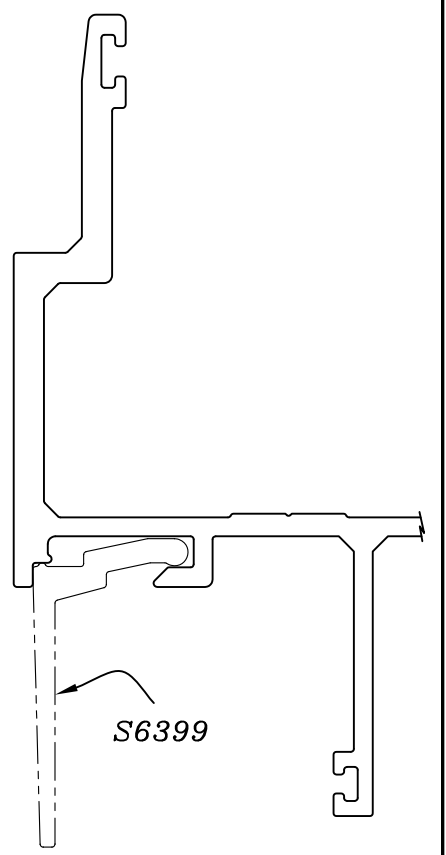
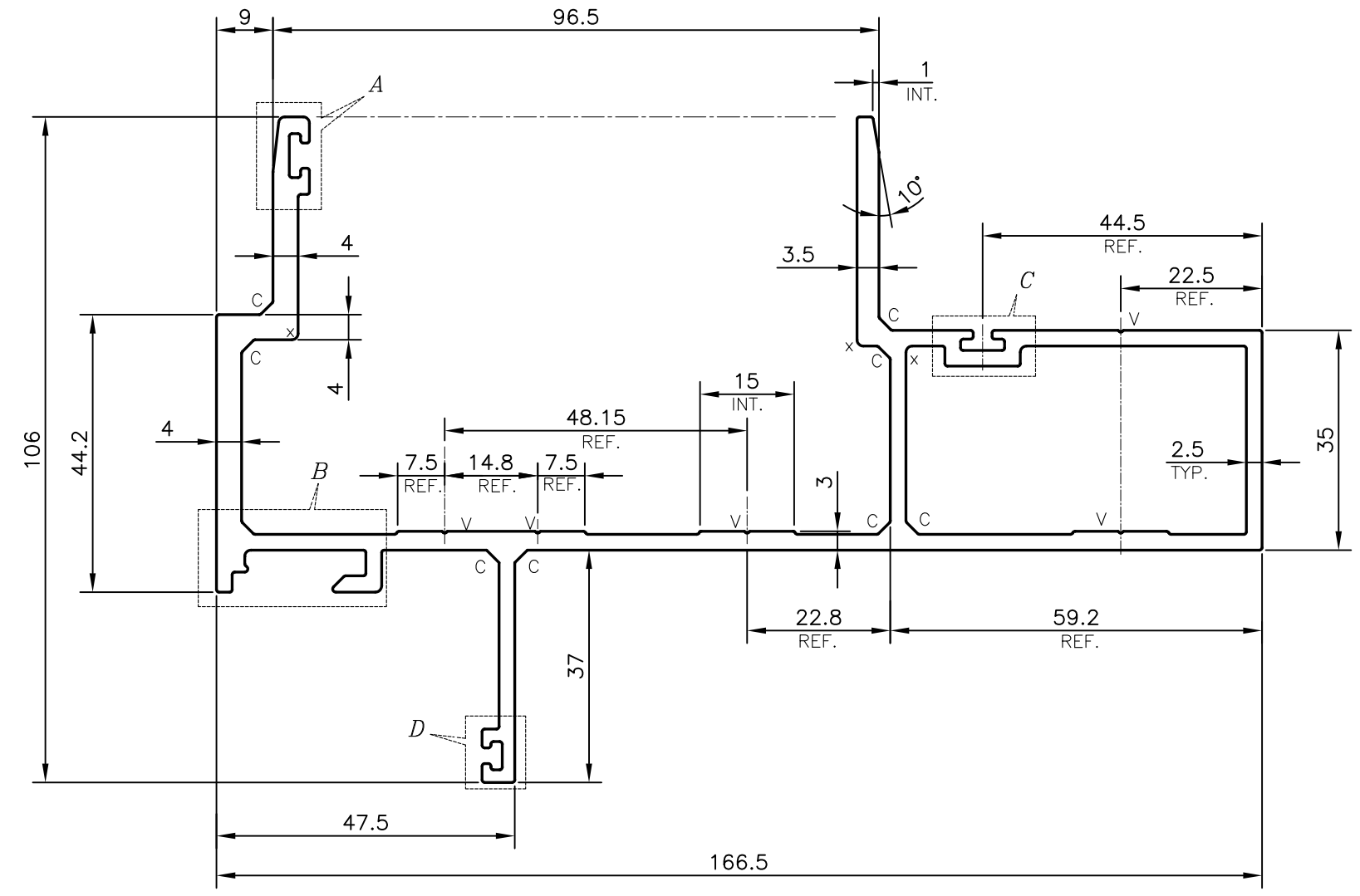
DETAIL OF "C"
SCALE 3:1



DETAIL OF "B"
SCALE 2:1



DETAIL OF "D"
SCALE 2:1



C = CHAMFER 2x45° (9 PLACES)
X = RADIUS 1 mm. (6 PLACES)
V = VEE GROOVE 0.3x90° (5 PLACES)

TOLERANCES ON OVERALL WIDTHS & WIDTHS ACROSS FLATS OF BARS, & REGULAR SECTIONS

UPTO 6.40mm - ±0.20	UPTO 32.0mm - ±0.38	UPTO 120.0mm - ±0.85
UPTO 10.0mm - ±0.23	UPTO 50.0mm - ±0.46	UPTO 160.0mm - ±1.02
UPTO 12.0mm - ±0.25	UPTO 60.0mm - ±0.53	UPTO 200.0mm - ±1.14
UPTO 16.0mm - ±0.28	UPTO 80.0mm - ±0.69	UPTO 250.0mm - ±1.40
UPTO 25.0mm - ±0.30	UPTO 100.0mm - ±0.75	UPTO 300.0mm - ±1.65

1. STRAIGHTNESS=1.7 mm/M
2. TWIST=1.7 mm/M
3. ANGULARITY= ±2'
4. FLATNESS =0.007xWIDTH

<p>SYMBOL OF QUALITY AN ISO 9001 COMPANY</p>	<p>JINDAL ALUMINIUM LTD. BANGALORE-560073 (INDIA)</p>	NAME	DATE
		DRAWN	PARVESH 09-07-2019
		CHECKED	
		APPROVED	B.NATARAJA 07-08-2019
		SCALE	1:1
		AREA mm ²	1370.663
		PERIMETER mm.	770.129
		WEIGHT kg/m	3.701
PARTY'S NAME	ALUPLEX INDIA PVT. LTD., MUMBAI	DRAWING No.	SECTION No.
PARTY'S DRAWING No.	AS PER AUTOCAD DRAWING-AP-1926	P-19752-1	-
ALLOY & TEMPER	6063 T6	S6390	S6390
DESCRIPTION	CURTAIN WALL SECTION-AL-03		

1. ALL DIMENSIONS ARE IN mm.
2. ROUND OFF ALL SHARP CORNERS WITH 0.40 mm.
3. TOLERANCES WILL BE AS PER IS:6477-1983, UNLESS OTHERWISE SPECIFIED